

AutoLift AL-TT6000-6 Heavy Duty Vehicle Turntable



AutoLift AL-TT6000-6

Heavy Duty Vehicle Turntable



Features

Unit Specifications:

- Diameter: 6000 mm
- Height: 310 mm
- Load Capability: 10,000 kg
- Rotation Speed: 0.2 ~ 1.0 rpm
- Speed Control: Variable speed control
- Motor Power: 0.75kW(1hp)
- Top Surface: Galvanised Checker Plate
- Installation Weight: 2448 kg
- Turntable Foundation: Concrete pit
- Uniformly Distributed Load: 1.4kPa (141.5kg/m²)

Component Specifications:

- Structure: Fan shaped structure frame combined
- Support Wheels: Fixed
- Center Bearing: Fixed
- Drive Method: Pin-gear drive system
- Rail Plate Device: Pin wheel
- Motor Drive: Gearbox + Pin
- Steel Coating: Corrosion resistant epoxy / Hot-dipped galvanized

Control System Information

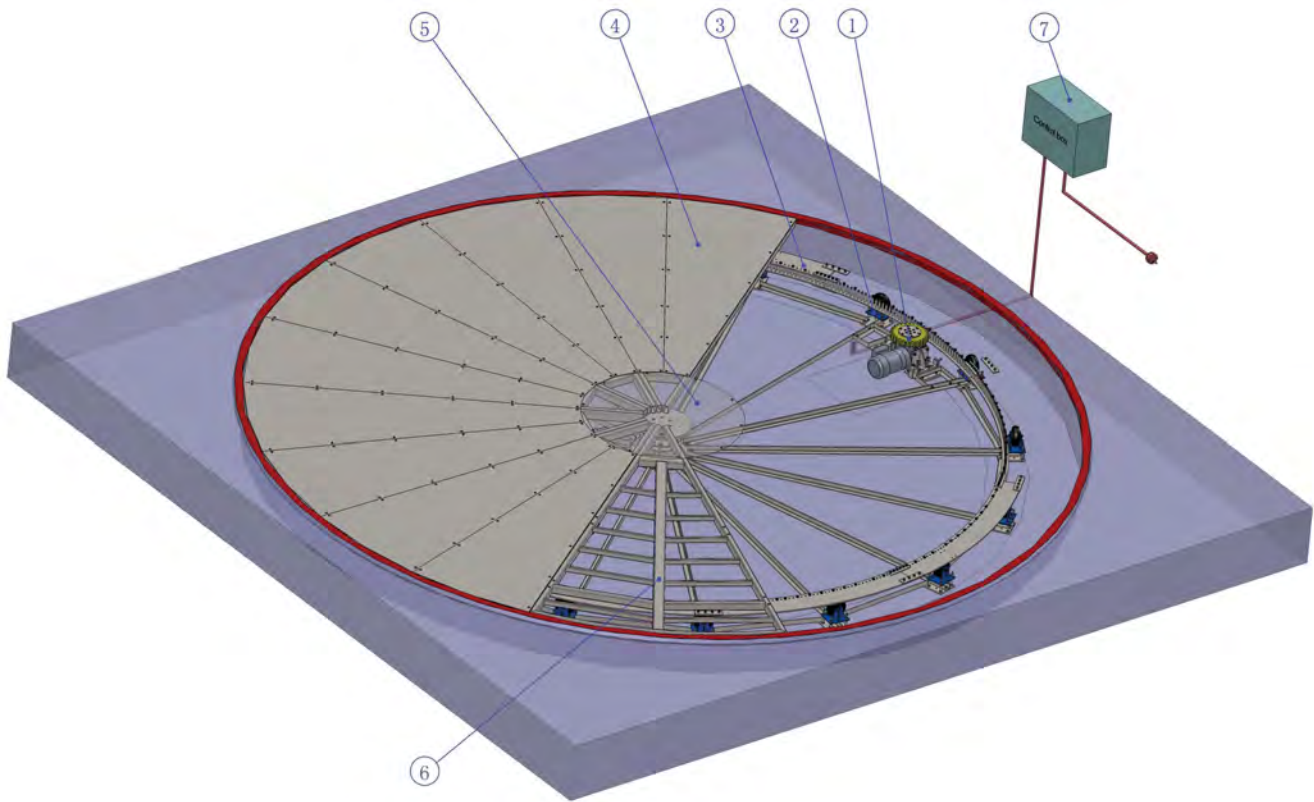
Function: On/Off, clockwise/anti-clockwise, variable speed control, emergency stop

Control Box: Fixed installation

Power Required: Single phase 240V 50Hz or Three phase 415V 50Hz

Max current: 10A

Remote Control: Wireless Remote Control System



No.	Item Name	Quantity
1	Motor drive	1
2	Support wheel	16
3	Pin-gear device	10
4	Top surface	20
5	Center bearing	1
6	Steelworks	10
7	Control box	1

Site Requirements

Site Installation Requirements

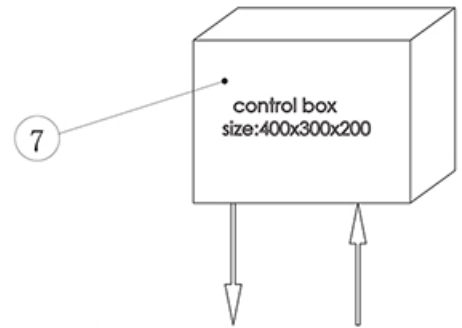
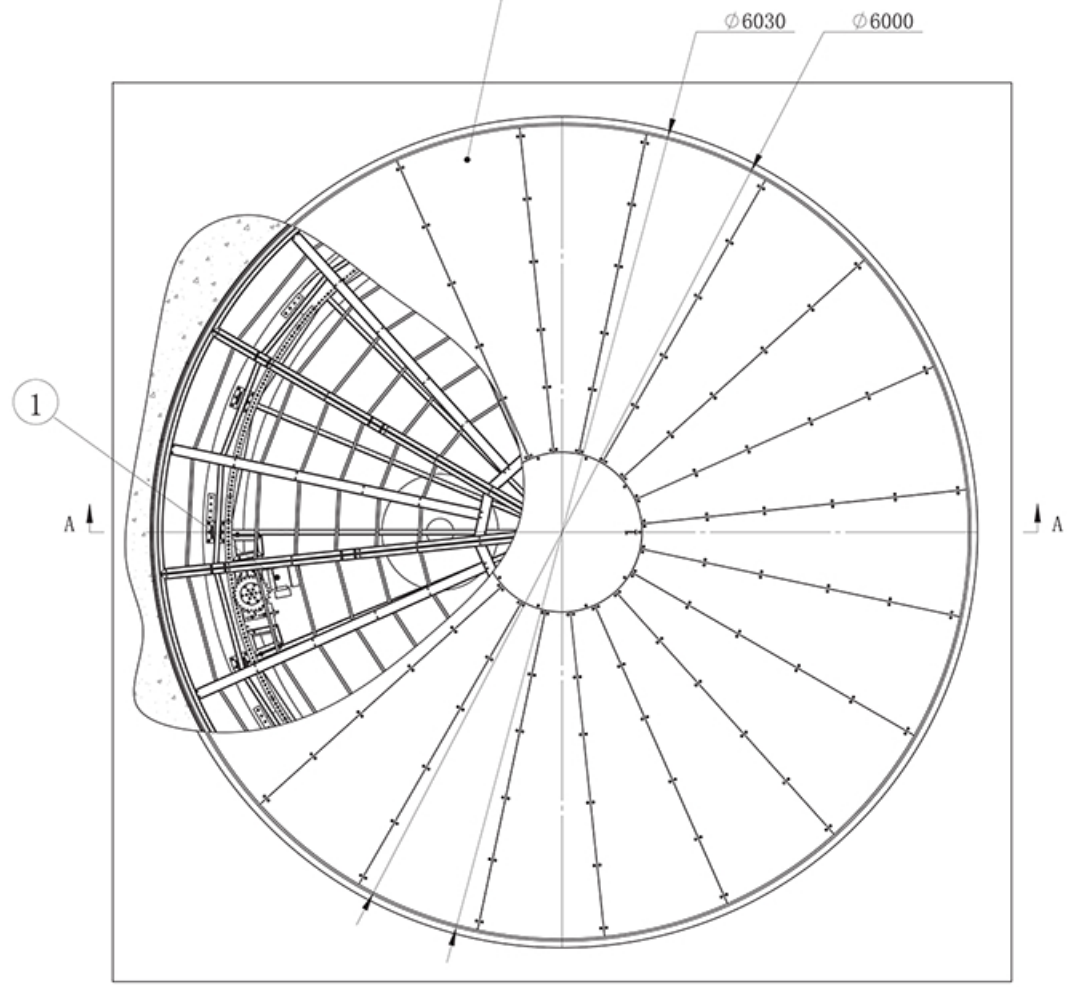
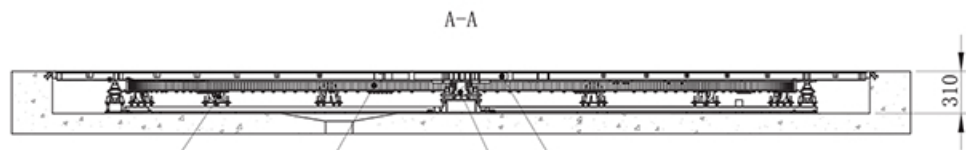
At least one week before the agreed installation date, the client will verify that the site conforms to the tolerances and requirements of the installation plans and product Data Sheets for the applicable model of Parking Equipment supplied by AAQ. The installation area where Parking Equipment is to be installed must have unobstructed overhead clearance and must be clear of service pipes, sprinkler systems and ventilation ducting. AAQ will accept no liability for overhead obstructions that are fitted after the installation of the Parking Equipment and subsequently interfere with proper use. In the case of pit installations, the client will ensure that the pit/s are dry and are provided with suitable drainage. Information on falls and drainage are available from the Product Data Sheet.

Water

Whilst car parking equipment is usually galvanized it is not designed to be exposed to water over prolonged periods or immersion. The client is responsible for providing adequate drainage and for ensuring that water does not come in contact with electrical components. Failure to do this will void any warranties and may ultimately result in irreparable damage to the equipment. Under no circumstances will any faults or equipment damage related to water be covered under warranty.

Warning

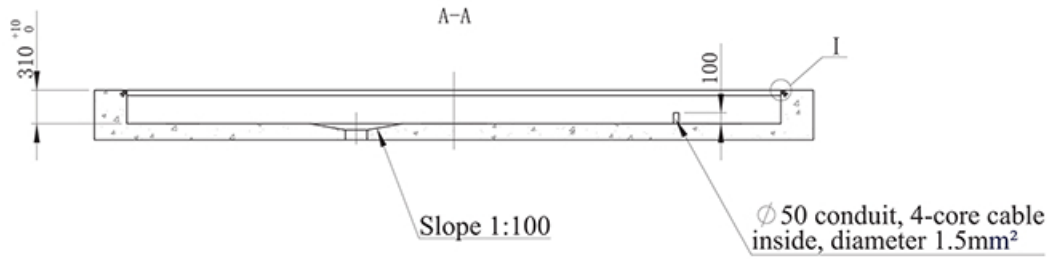
If the specified building dimensions are not maintained in the design and building process, installation of the Parking Equipment may not be possible and cost penalties may be incurred.



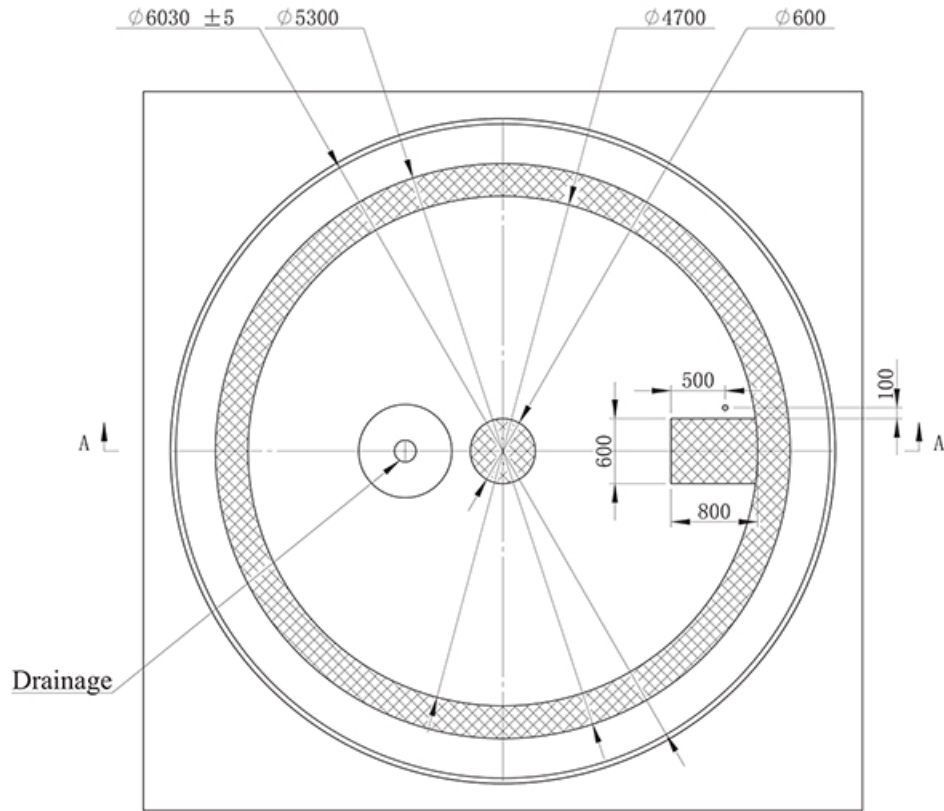
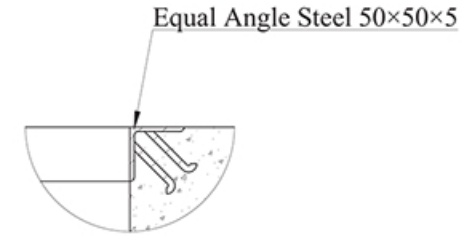
4-core cable to motor
Power supply cable
Specification pH05VV-F 4G1.5

Input power: 240V
Power supply cable
Specification.H05VV-F 3G1.5





I
1 : 5



Specification

1. The pit is to be poured with 32MPa or higher reinforced concrete;
2. The mesh region is the location of center bearing, motor drive and support wheel, Pressure is 0.35MPa. Shear force at motor drive location is 1200N;
3. Flatness of pit form to have error of less than 10mm, depth of the pit is no less than 310mm;
4. Circularity of pit diameter 6030mm to have error less than 10mm;
5. The center bearing, support wheel and motor drive are fixed on the ground by M8×80mm expansion bolts;
6. There is 4 core cable in the conduit (∅ 50mm PPR plastic pipe). Diameter is 1.5mm²;
7. Input power to the control box is 240V AC. Motor should have ground protection cable;
8. The dimension and quantity of the drainage is designed and made based on the actual displacement by buyer.