

SINGLE POST HOIST

AutoLift AL-167262



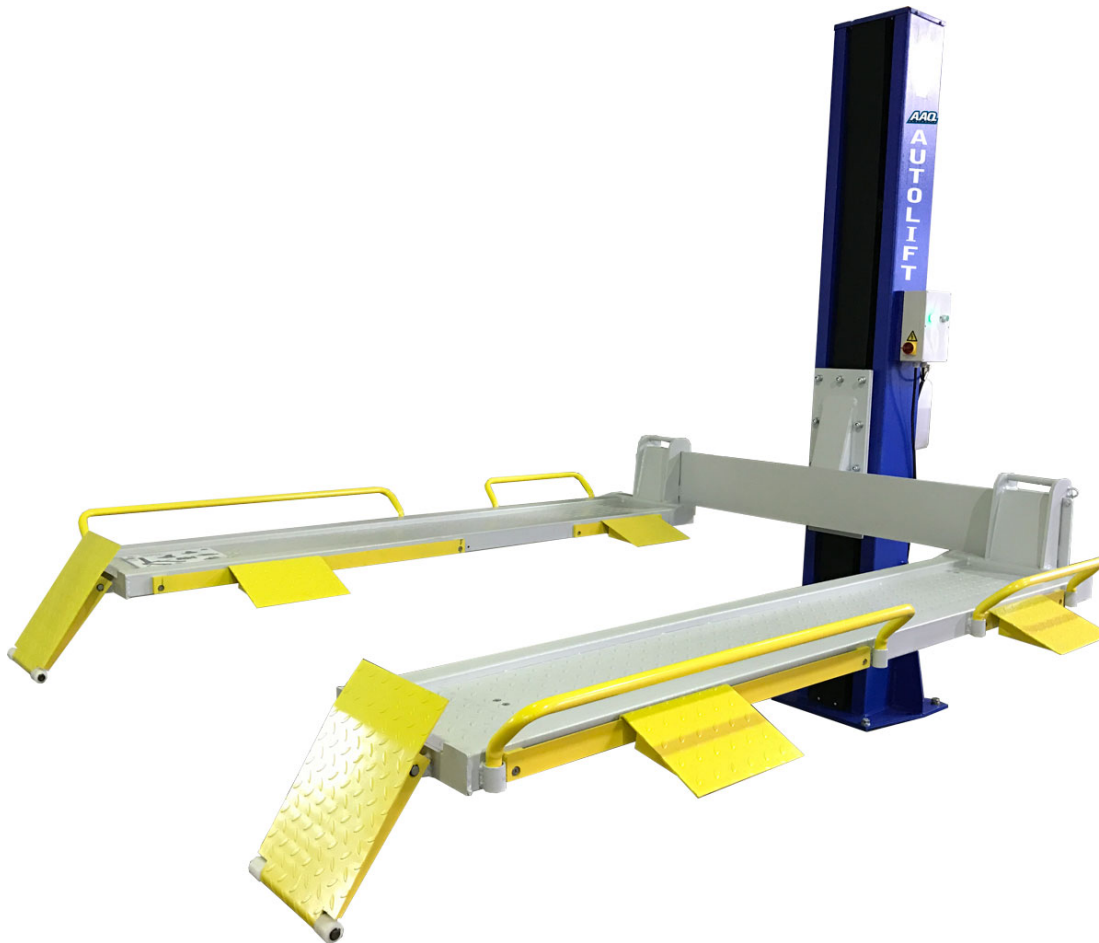
Single Post Lawnmower & Service Vehicle Hoist

1000Kg Maximum Lifting Capacity

Design Registration Approval Number: WAH22390

Design Code: AS1418.9-1996

INSTALLATION MANUAL & OPERATION INSTRUCTIONS



READ FIRST



DO NOT use the machine until you read and understand all the dangers, warnings and cautions in this manual.



- READ THE ENTIRE CONTENTS OF THIS MANUAL BEFORE INSTALLATION AND OPERATION. BY PROCEEDING YOU AGREE THAT YOU FULLY UNDERSTAND AND COMPREHEND THE FULL CONTENTS OF THIS MANUAL. FORWARD THIS MANUAL TO ALL OPERATORS. FAILURE TO OPERATE THIS EQUIPMENT AS DIRECTED MAY CAUSE INJURY OR DEATH.

Specifications subject to change without notice.

Note: While all due care and attention has been taken in the preparation of this document, Advance AutoQuip shall not be liable for any inaccuracies or omissions which may occur therein

Advance AutoQuip

2 McDonald Crescent | Bassendean WA 6054

Ph: 08 9279 1663 | Fax: 08 9279 1667 | E: sales@aaq.net.au | W: www.aaq.net.au

CONTENT

1. Safety

- 1.1 Note, Caution and Warning
- 1.2 Important Information
- 1.3 Safety Instructions

2. Technical Manual

- 2.1 Product Description
- 2.2 Technical Data
- 2.3 Hydraulic Scheme
- 2.4 Circuit Diagram

3. Before Using

- 3.1 Site Selection
- 3.2 Surface Condition
- 3.3 Installation Instruction
- 3.4 Preparation for Starting up

4. Operating Instructions

- 4.1 Loading a vehicle
- 4.2 To raise hoist
- 4.3 To lower hoist
- 4.4 Unloading a vehicle

5. Maintenance Instructions

6. Parts Drawing & Parts List

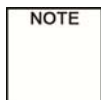
7. Trouble Shooting Guide

8. Safe Operating Procedure, Commissioning Report & Warranty

1. Safety Information

1.1 Note, Caution and Warning

This document uses the following conventions—Note, Caution and Warning – to alert you to special instructions, tips, or hazards for a given procedure. Please familiarize yourself with the conventions described below.



Indicates the important information that requires special attention, such as a procedure for a specific vehicle, or tips on operating the equipment.



Indicates the potential for damage to equipment, accessories, or the vehicle unless you follow the instructions or procedure exactly.



Indicates the potential for property damage, personal injury, or death due to hazards associated with the equipment, vehicle, or environment. Do not perform any procedure until you have read and understood the warning instructions.

1.2 Important Information

1. Read this manual thoroughly before installing, operating, or maintaining this hoist.
2. This hoist is designed for indoor use only, and should not be installed in a pit or depression.
3. The lifts have specific electrical requirements as described in the Installation Instructions section of this manual.
4. This hoist has a minimum ceiling height requirement as described in the Installation Instructions section of this manual.
5. Failure by the owner to provide the **recommended shelter, mounting surface, electrical supply, and ceiling height** could result in unsatisfactory hoist performance, property damage, or personal injury.
6. The operation of the hoist is permitted by authorized person only.
7. If any confusion, please contact the service provider or contact the manufacturer:
Advance AutoQuip
2 McDonald Crescent
Bassendean, Western Australia, 6054
+61 8 9279 1663
sales@aaq.net.au

1.3 Safety Instructions

1. **Do not** raise a vehicle on the hoist until the initialization is completed as described in this manual.
2. Technicians should be trained to use and care for the hoist by familiarizing themselves with the publications listed above. The hoist should **never be operated by an untrained person.**
3. Always position the ramps to accommodate the vehicle before entering and exiting the bay.
4. **Do not overload the hoist.** The capacity of the hoist is shown on cover of this document and on the manufacturer's name plate and columns.
5. **Do not** climb onto the hoist
6. Positioning the vehicle is very important. Only trained technicians should position the vehicle on the hoist. **Never allow anyone to stand in the path of the vehicle as it is being positioned and never raise vehicle with passengers inside.**
7. Position the ramps so that the vehicle is evenly balanced on the hoist. Make sure that locks have properly engaged before raising the hoist to a working height.
8. Keep everyone clear of the hoist when the hoist is raising and lowering, the locking mechanism is disengaged, or the vehicle is in danger of falling.
9. Unauthorized personnel should never be in the vicinity when the hoist is in use.
10. Inspect the hoist daily. **The hoist should never be operated if it has damaged components, or is malfunctioning.** Only qualified technicians should service the hoist. **Replace damaged components with manufacturer's genuine parts.**
11. **Keep the area around the hoist clear of obstacles.**
12. **Never override the hoist controls.**
13. Avoid excessive rocking of the vehicle when it is on the hoist.
14. To reduce the risk of personal injury, keep hair, loose clothing, fingers, and all body parts away from moving parts.
15. To reduce the risk of electric shock, **do not** use the hoist when wet, do not expose the hoist to rain.
16. To reduce the risk of fire, **do not** operate equipment in the vicinity of open containers of flammable liquids (e.g gasoline).
17. Use the hoist only as described in this manual, **use only manufacturer's recommended attachments.**

18. **Unusual vehicles, such as limousines, RV's, and long wheelbase vehicles, may not be suitable for lifting on this equipment.** If necessary, consult with the manufacturer or the manufacturer's agent.
19. The maintenance procedures described in this manual can be done by the hoist's owner/employer. Any other procedure should only be performed by trained hoist service personnel. **These restricted procedures include, but are not limited to, the following: cylinder replacement, platform and safety latch replacement, motor replacement, control board replacement, oil replacement and refilling, lubrication.**
20. Anyone who will be in the vicinity of the hoist when it is in use should familiarize themselves with following Caution, Warning, and Safety related decals supplied with this hoist, and replace them if they are illegible or missing.
21. Travelling on the load carry device is forbidden.
22. Keep an eye on the hoist throughout the motion of the hoist. Especially after raising a short distance, ensure the hoist is correctly and safely positioned.
23. Never move the vehicle when it is loaded on the hoist, ensure that wheel chocks are in the front and rear of at least one wheel.
24. Only use on a level ground.
25. Wear necessary protective equipments before use.

Disclaimers

The information contained in this manual was considered accurate at the time of printing and is subject to change without notification.

2. Technical Manual

2.1 Product Description

The AutoLift 167262 hydraulic single post hoist is a frame contact hoist incorporating the latest safety technologies. Designed and manufactured for lifting vehicles with a capacity of 1,000kg, it is also fully capable for lifting small tractors, ride on mowers, quads bikes and small vehicles under 1000Kg and safely holding them in an elevated position.

The AutoLift 167262 hydraulic single post hoist consists of a fixed single post column, hydraulic power control system and safety devices.

2.2 Technical Data

Capacity	1000 kg
Lifting height (Max.)	1950 mm
Lifting height (Min.)	125mm
Height overall	2700mm
Width overall	2592 mm
Length overall	3292 mm
Length of platform	2356 mm
Width of platform	310 mm
Adjust range of platform	890mm-1700mm
Adjust range of ramp	600mm-1700mm
Power supply	240V, Single Phase, 15Amp, 2.2KW
Ambient air temperature	+5°C ~ +40°C
Ambient air humidity	≤50%
Altitude	below 1,000 m above sea level -25°C ~
Storage temperature	+55°C
Noise	<70db

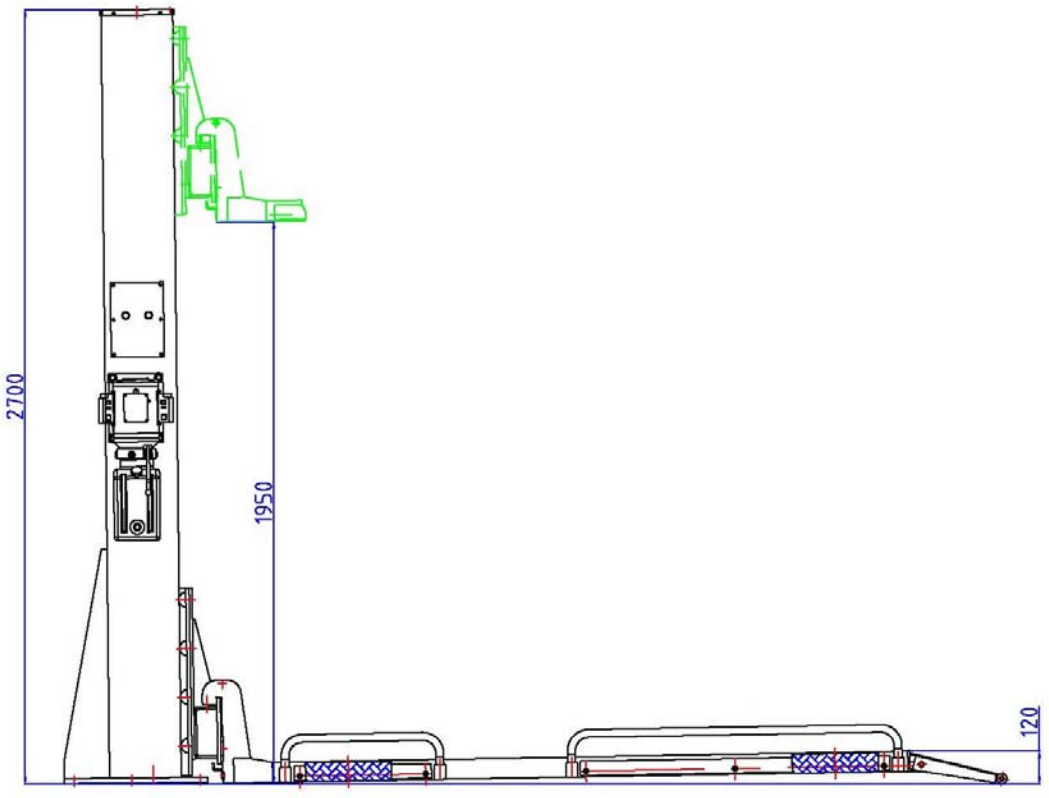
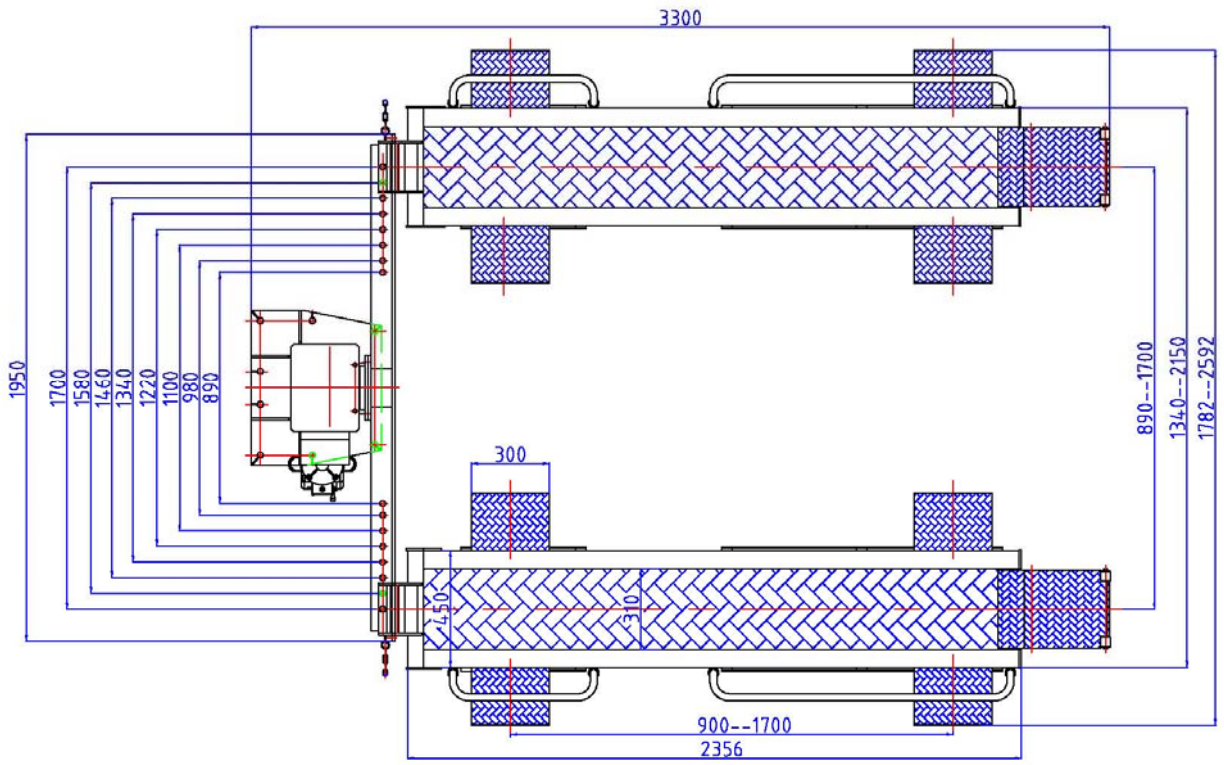
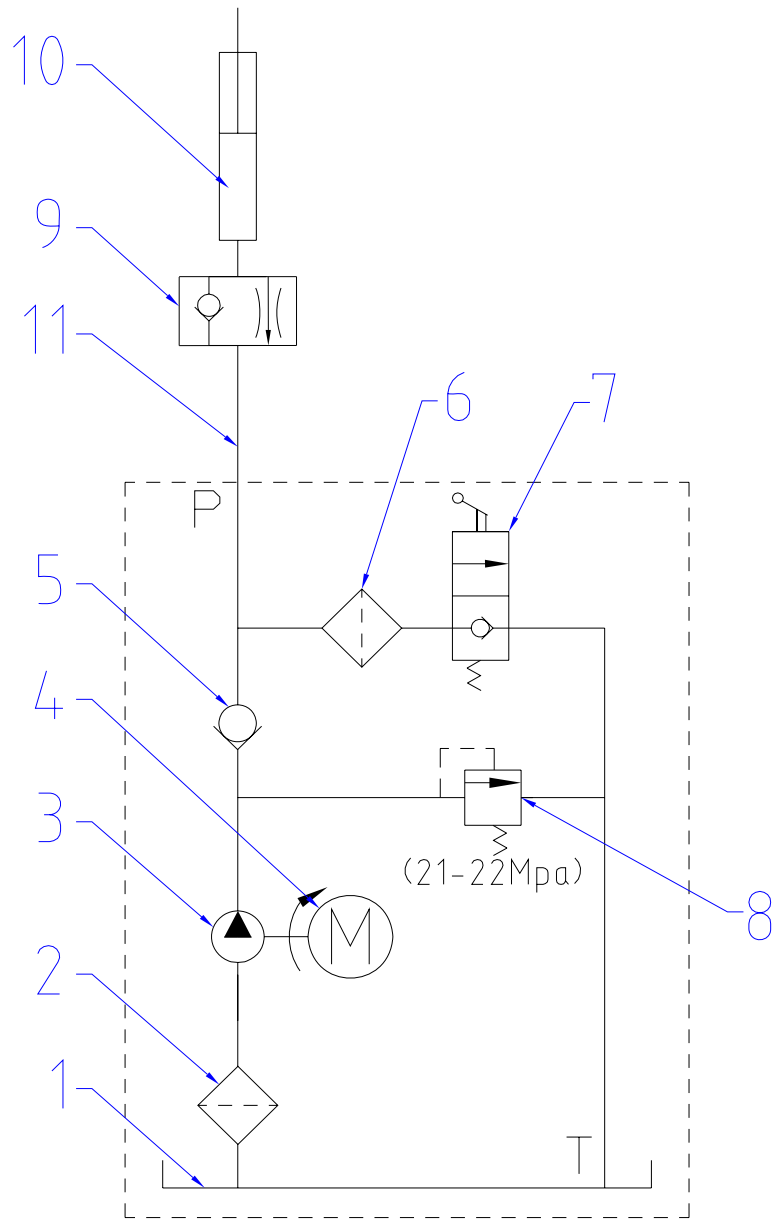


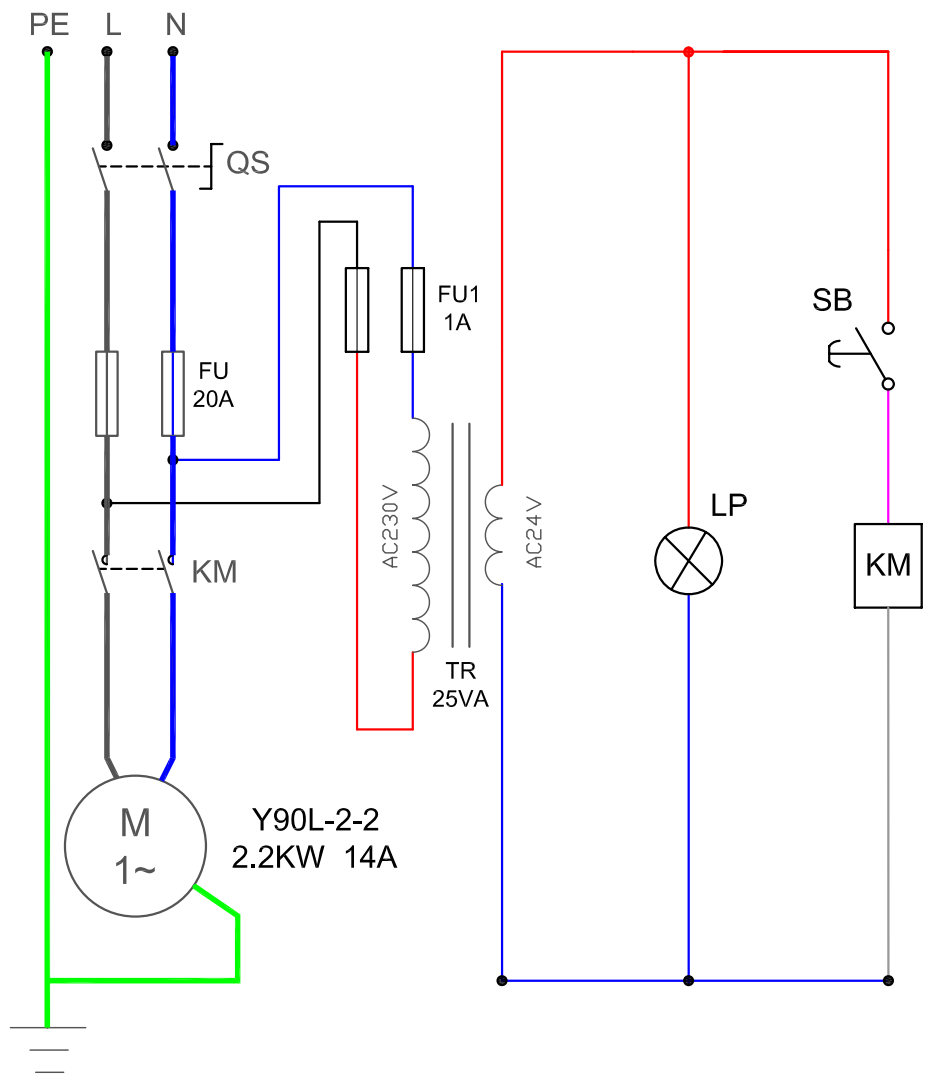
Fig.01

2.3 Hydraulic Scheme



1. Oil tank	2. Mesh	3. Gear pump	4. Motor
5. One-way valve	6. Mesh	7. Release valve	8. Overflow valve
9. Restrictor valve	10. Cylinder	11. Oil tube	

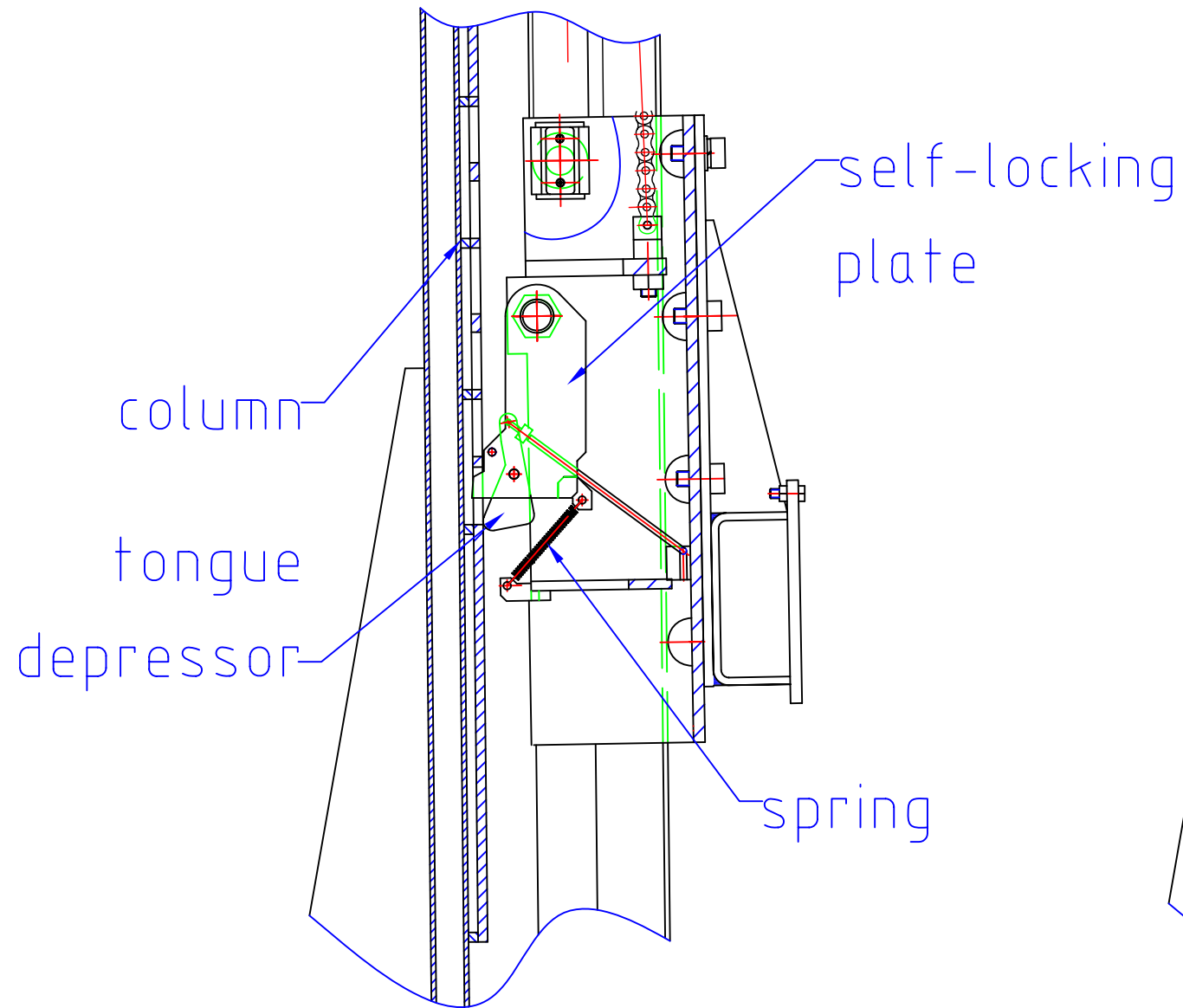
2.4 Circuit Diagram



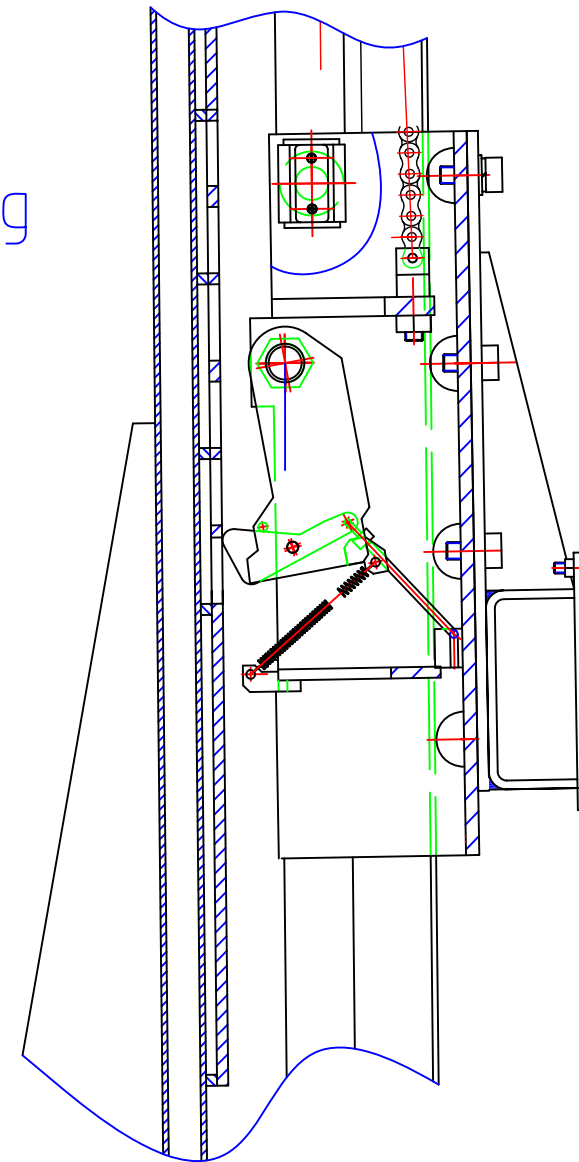
7	M	AC motor	1	1PH/240V/50HZ/2.2KW	
6	KM	AC contactor	1	NC1-0910-24VAC	
5	SB	up button	1	Y090	
4	FU1	fuse 1#	2	1.0A	
3	TR	transformer	1	BK-25 230V/24V	
2	FU	fuse	2	20A	
1	QS	power switch	1	LW26-20	
No.	Symbol	Description	Qty.	Specification	Remark

						Circuit Diagram					
Mark	Rev.	Sub.	Rev.Doc.	Sign	Date						
Dwn.			Std.			Stage mark	Weight	Scale			
Ckd.							P				
Atd.											
Tec.			Appd.			Sheet of					

Locking Condition



Unlocking Condition



Safety Lock Working Principle:

1. Raising up or to the desired height by pushing the up button, the self-locking plate moves upward along the safety lock ladder, the safety lock engages automatically, ensure that the person and vehicle are in safe condition.
2. When lowering down, the lift should be raised up for a short distance to release the self-locking plate, then pull the lock cable to turn the tongue depressor, so that the self-locking plate leaves from the safety lock ladder. At the moment, the lift could lower down to the minimum height.
3. If stop when raising, just release the up button, press the release handle on the power unit, the lift will lower down to the lock position automatically. If stop when lowering down, the lift must be raised up for a short distance until hearing the sound of the tongue depressor turning, then the lift could lower down to lock position.

						Mechanism Safety Lock			
Mark	Rev.	Sub.	Rev.Doc.	Sign	Date				
Dwn.			Std.			Stage mark	Weight	Scale	
Ckd.							P		
Atd.									
Tec.			Appd.			Sheet	of		

3. Before Using

3.1. Site Selection

The hydraulic single post hoist is designed only for indoor use. Application in a room with explosion hazard is not permitted. Setting in a wet place, a car wash center for instance, is forbidden.

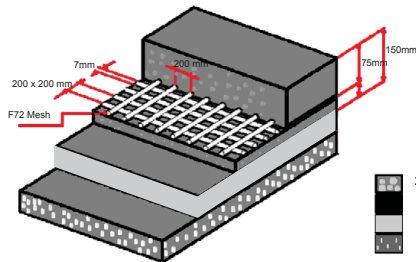
3.2. Surface Condition

The hydraulic single post hoist should be installed on level ground.





The foundation must be 6" (150mm) minimum thickness concrete, with a minimum compressive strength of 3,000 psi, reinforced with steel bar



Failure to accomplish the foundation requirement may cause the hoist instability or personal injury. Installing on asphalt, soft clay floor or near the expansion gap is prohibited.



FOUNDATION DIMENSIONS IN MM			QUALITY OF CONCRETE	MIN. PRESSURE RESISTANCE OF SURFACE	MAX. REACTION ON EACH BEARING POINT
Length	Width	Thickness	25MPA	425 Kg/cm ²	0.9 Kg/cm ²
5000	4000	150			

-  25MPA REINFORCED CONCRETE
-  F72 REINFORCED MESH
-  COMPACTED SOIL
-  GRAVEL SHEETING

3.3. Installation Instruction

1. Unpack the column and other parts.

- A. Mount the top cover on the column.
- B. Mount on the curtain to both top and bottom of the column.

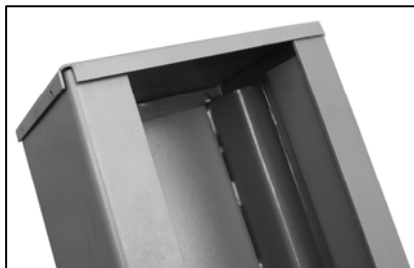


Fig. 1-A

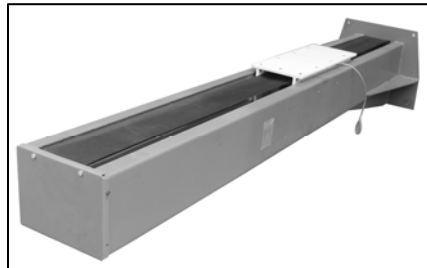


Fig. 1-B

2. Fix the column & lifting frame

A. Fix the column

Stand the column upright and fix to the the ground with supplied (8) eight M20 x 140 long anchor bolts.

1. Using the base plate as a template, use a masonry drill to drill the holes.
2. Remove thoroughly the debris and dust in holes and ascertain that the post stay right upon the circle previously marked by chalk.

NOTE: Torque all anchor bolts to 120 ft lbs.

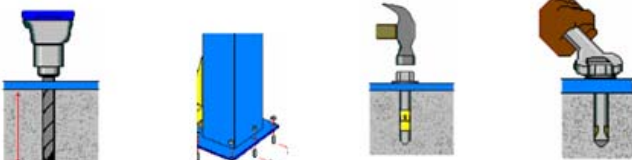


Fig. 2-A-3

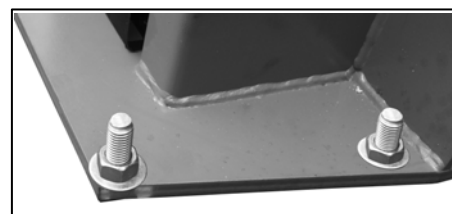


Fig. 2-A-1



Fig. 2-A-2

B. Fix the lifting frame

Put the lifting frame in front of the column by using a fork lift or engine crane. Then bolt the lifting frame on the carriage with the bolt supplied.



Fig. 2-B-1

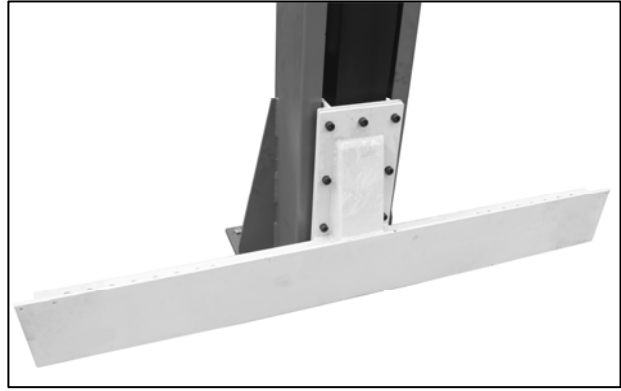


Fig. 2-B-2

3. Mount the hydraulic power unit

- A. Install the motor mount plate on the side or back of the column with screws.
- B. Mount the hydraulic motor pump on the column with bolts and nuts.



Fig. 3-A



Fig. 3-B

C. Connect the hose fitting and the hose from pump to cylinder.



Fig. 3-c-1



Fig. 3-c-2

4. Mount the control box

A & B. Mount the control box on the back or side of the column.



Fig. 4-A



Fig. 4-B

5. Connecting

- A. According to the connecting diagram, connect the cables to the appropriate position.
- B. Connect the 240V/50Hz, 1 phase power supply cable to the control box.

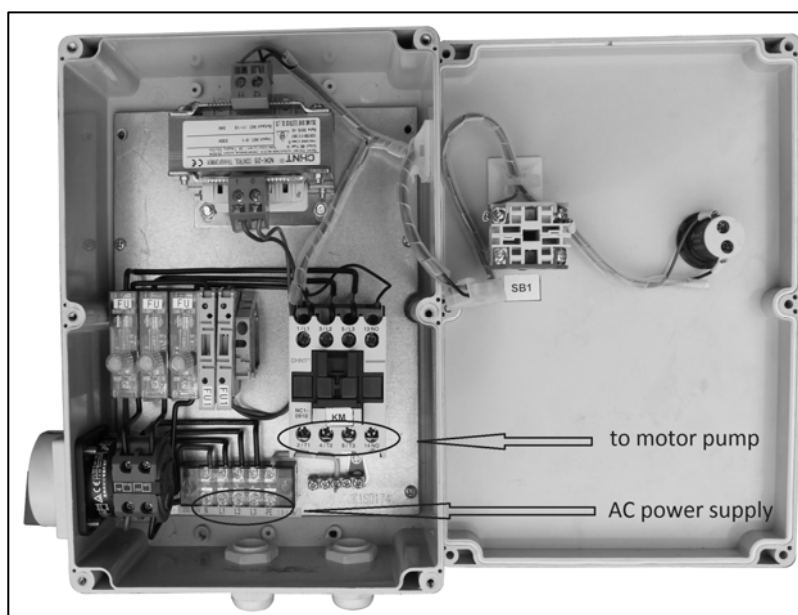


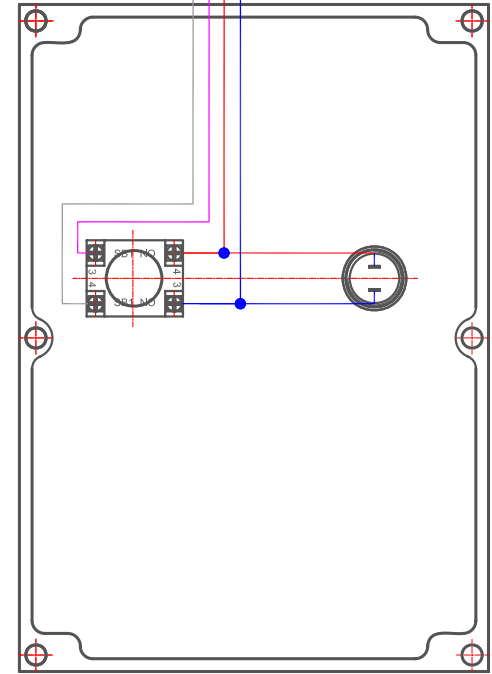
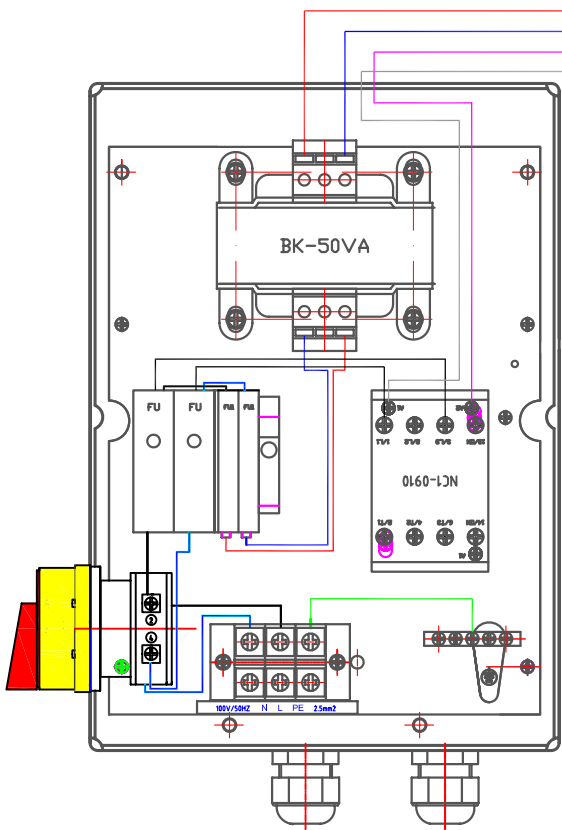
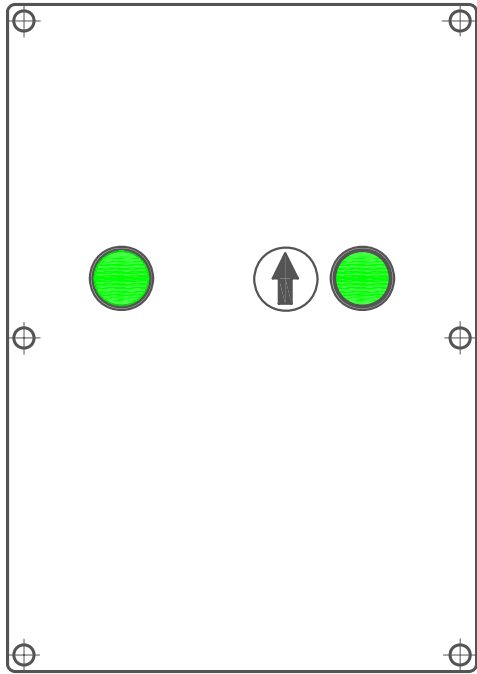
Fig. 5

Note:

A 15Amp plug is required and will need to be connected by a licenced electrician.

6. Fuel up

Remove the rubber cap from the top of the reservoir. Fill the reservoir with approx. 10 litres of 32/46 Non-Detergent Non-Foaming Anti-Wear Hydraulic Oil (SAE-10) or until it reaches near the top.



						Internal Wiring			TC02A
Mark	Rev.	Sub.	Rev.Doc.	Sign	Date	Stage mark	Weight	Sca	
Dwn.				Std.					
Ckd.									
Atd.							P		
Tec.			Appd.			Sheet	of		

7. Install platforms & accessories

A. Hook on the platforms on the lifting frame.

B. Install all the ramps.

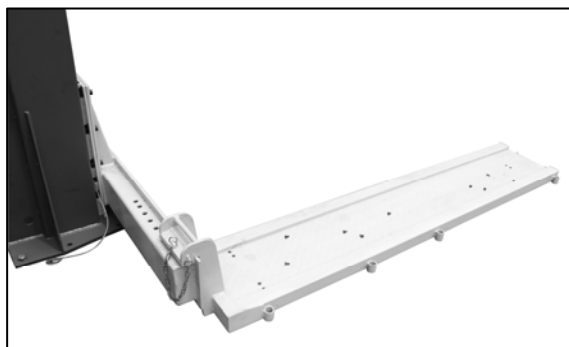


Fig. 7-A

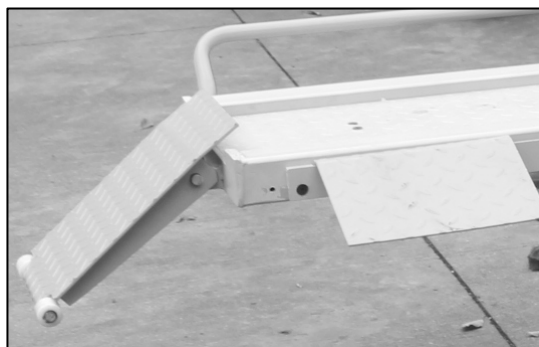


Fig. 7-B-1

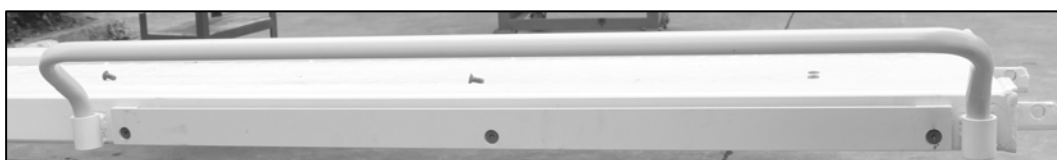


Fig. 7-B-2

3.4. Preparation for Starting up

3.4.1 The locks are automatic and will **engage** when in operation.

3.4.2 The hydraulic oil should be ISO-32.or 46

3.4.3 Have a certificate electrician establish 240V/50Hz, single phase power supply.

An (RCD) protection will need to be installed by an electrician

3.4.4 Air Evacuation. There may be a little air in the hose or cylinder during installation.

Operate the hoist up and down ieveral times without load until the air is bled.

3.4.5 Raise the hoist about 600mm high and then lower it. Repeat this process two or three times, and then top off the hydraulic oil reservoir again, if necessary. This assures that hydraulic oil is distributed everywhere in the system that it needs to be.



Only top off the reservoir with the hoist at the “ground” position.

4. Operating Instructions

Be sure to read and familiarize yourself with the Safety Instructions at the beginning of this manual. Failure to follow Safety Instructions may result in property damage, personal injury or death.



Be sure to read and familiarize yourself with the Safety Instructions at the beginning of this manual. Failure to follow Safety Instructions may result in proper damage, personal injury or death.



To avoid personal injury and/or property damage, permit only trained personnel to operate hoist. After reviewing these instructions, get familiar with hoist controls by running the hoist through a few cycles before loading vehicle on the hoist.



Always lift the vehicle using the ramps. **NEVER** raise just one end, one corner, or one side of vehicle.

Hoist Preparation:

Hoist must be fully lowered and clear of all personnel before the vehicle is positioned on hoist.

4.1 Loading a vehicle:

1. Remove the wheel stop bars from the platforms.
2. Drive the vehicle onto the ramps until wheels are about centered on the platforms but as close to the column as possible. Apply the parking brake.
3. Place a wheel chock in front and rear of at least one wheel

4.2 To Raise Hoist

1. Push the button (UP) on control box.
2. Raise the vehicle 500mm from the floor, then release the UP button.
3. Check the vehicle is evenly balanced.
4. Continue to raise to desired height only if vehicle is secure and balanced on hoist
5. Keep a visual check when raising the hoist.
6. Push on the release lever to lower the platforms into the locks.



BE CAREFUL NOT TO RAISE THE VEHICLE SO HIGH THAT IT STRIKES THE CEILING! BE AWARE OF ANYTHING THAT PROTRUDES FROM THE CEILING, LIKE LIGHTBULBS, GARAGE DOOR OPENERS OR DOOR TRACKS.



Before attempting to lift any vehicle, be sure that:

- a) **Vehicle individual axle weight does not exceed one-half hoist capacity.**

b) Vehicle is stable on hoist

4.3 To Lower Hoist

- a. Check all danger points of the hoist and be sure that there are no objects or people in the working area (danger area) around the hoist or on the hoist.
- b. Push the up button on control box panel to raise the platforms to approx. 50mm or until locks are clear.
- c. Pull the lock release cable to release the lock.
- d. Push down and hold the release lever on the motor pump to lower the platforms to the ground.



Remain clear of hoist when lowering vehicle. Observe pinch point warning decals. If hoist is not operating properly, DO NOT use until adjustment or repairs are made by qualified hoist service personnel.

4.4 Unloading Vehicle

- a. Remove wheel stops from the wheel before moving the vehicle.



If hoist is not operating properly, DO NOT use until adjustment or repairs are made by qualified hoist service personnel.

5. Maintenance Instructions

Contact your service provider for instruction before starting up if you are not completely familiar with automotive hoist maintenance procedures. Only qualified personnel can perform maintenance on this equipment. Any failure in operation may cause personal injury or death.

- ✓ Always keep bolts tight. Check periodically.
- ✓ Always keep hoist components clean.
- ✓ Always check for signs of oil leaks, contact your service provider.
- ✓ Check cables and sheaves for wear. Replace worn or broken parts with hoist manufacturer's genuine parts.

Every Month

- ✓ Lubricate locking latches. Push handle latches several times to allow oil to penetrate.
- ✓ Lubricate the four inside corners of the hoist columns with heavy duty bearing grease.
- ✓ With hoist lowered check the hydraulic fluid level. If necessary add oil as described in the Installation Instruction section of this manual
- ✓ Check tightness of all bolts.
- ✓ Check the nuts for tightness every week for the first month, and every month afterwards.

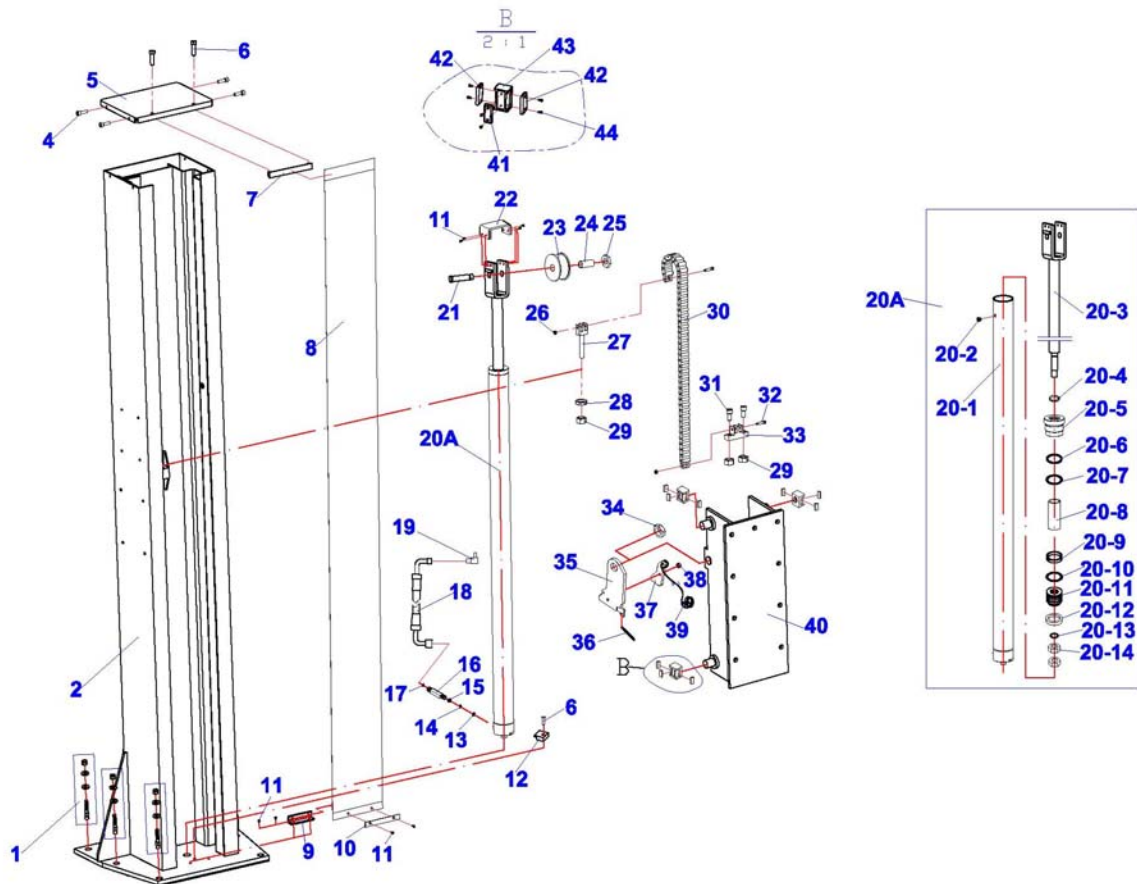
Every 3 Months

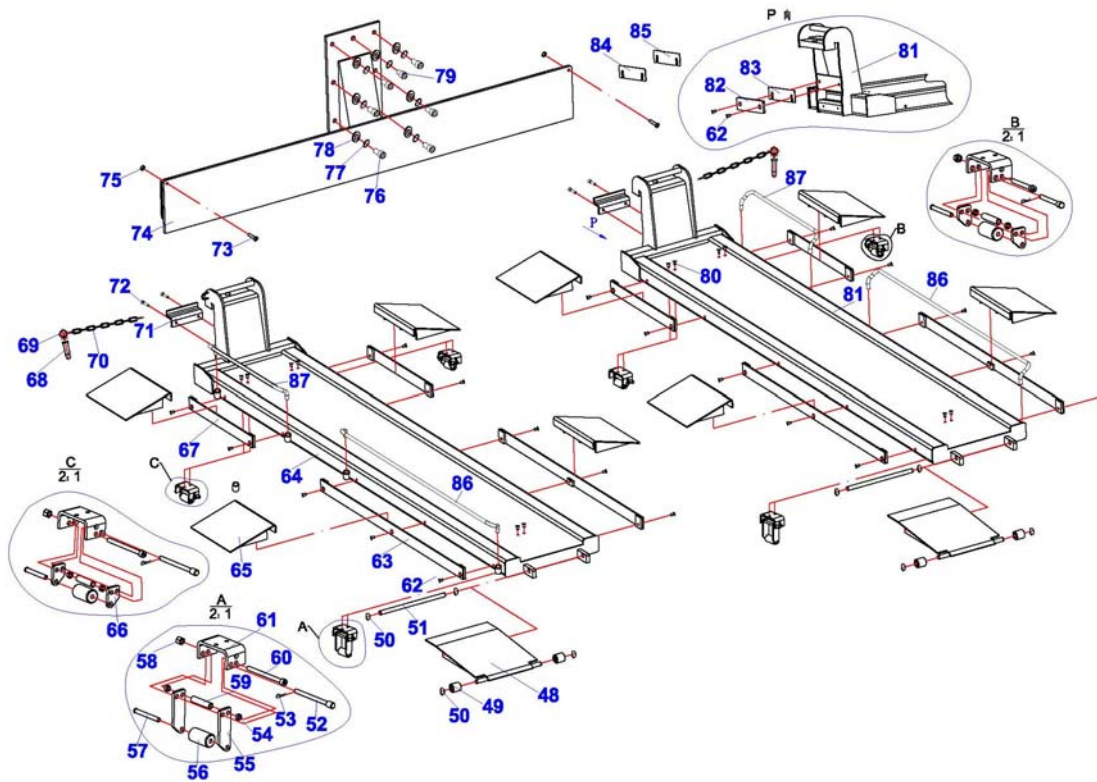
- ✓ Check and clean the oil filter

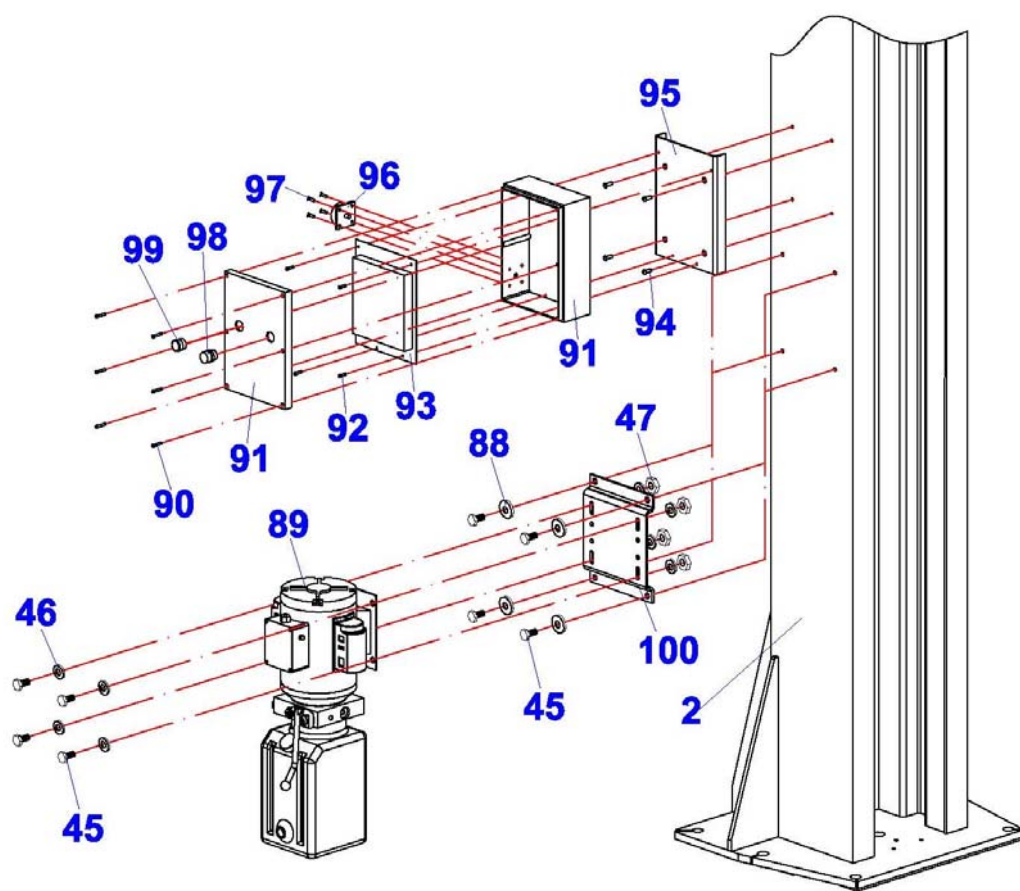
Every 6 Months

- ✓ Check fluid level of power unit and refill if required.
- ✓ If hoist stops short of full rise or chatters, contact your service provider.
Replace all caution, warning or safety related decals on the hoist if unable to read or missing.
Reorder labels from service provider.
- ✓ Check all components for wear.

6. Parts Drawing







Parts List

ITEM	CODE	DESCRIPTION	QTY	NOTE
1	DJ05-10000-000	anchor	8	3/4-10
2	TC02-01000-000	column	1	
4	5105-06025-000	screw	4	M6*25
5	DJ01-00005-M00	upper cover	1	
6	5101-08030-000	bolt	3	M8*30
7	DJ01-24000-A00	upper curtain bar	1	
8	TC02-00012-000	curtain	1	
9	TC02-00005-000	down curtain plate	1	
10	DJ01-00031-A00	down curtain bar	1	
11	5110-06012-000	screw	8	M6*12
12	DJ02-00027-000	fixing plate	1	
13	5603-00016-000	combined washer	1	
14	5309-00010-000	circlips	1	Φ10
15	DJ01-00030-M00	throttle washer	1	
16	TC02-00011-000	straight connector	1	
17	5901-00600-000	O-ring	1	Φ6*Φ2
18	DJ01-00021-000	hose	1	
19	SJ01-12001-000	angle connector	1	
20 A	TC02-08000-000	cylinder	1	
20-1	TC02-08100-000	cylinder body	1	
20-2	SJ05-03006-000	ventilating screw	1	
20-3	TC02-08200-000	piston bar	1	
20-4	5906-00380-000	duct ring	1	Φ46*Φ38*4
20-5	TC02-08002-000	guide ring	1	
20-6	TC02-08001-000	steel ring	1	
20-7	5901-000580-000	O-ring	1	Φ58*Φ3
20-8	TC02-08003-000	sleeve	1	
20-9	TC02-08004-000	guiding belt	1	Φ63*Φ58*9.6
20-10	5901-00560-000	O-ring	1	Φ56*Φ4
20-11	TC02-08006-000	piston	1	
20-12	5901-00530-000	U-seal	1	Φ63*Φ53*7.3
20-13	5901-00200-000	O-ring	1	Φ20*Φ2.5
20-14	TC02-08005-000	thin nut	2	M20
21	TC01-05001-000	axle	1	
22	TC02-00013-000	cover	1	
23	SJ05-03010-000	roller	1	
24	SJ05-03011-000	bush	2	

ITEM	CODE	DESCRIPTION	QTY	NOTE
25	5203-00020-000	thin nut	1	M20*1.5
26	5201-00006-000	nut	2	M6
27	TC02-00008-000	upper chain block	1	
28	5201-00016-000	nut	1	M16
29	5206-00016-000	lock nut	3	M16
30	TC02-00010-000	chain	1	
31	5105-16060-000	screw	2	
32	TC01-00002-000	chain pin	2	
33	TC02-00007-000	down chain block	1	
34	5206-00030-000	thin lock nut	8	M30*1.5
35	DJ01-13001-M00	lock board	1	
36	SJ01-07007-000	spring	1	
37	DJ01-13002-M00	lock tongue	1	
38	5206-00010-000	thin lock nut	1	M10
39	DJ01-13003-M00	cable	1	
40	TC02-02100-000	carriage	1	
41	DJ01-00029-M00	top nylon block	4	
42	DJ01-00028-M00	side nylon block	8	
43	DJ01-00027-M00	block frame	4	
44	5110-04010-000	screw	24	M4*10
45	5101-08025-000	bolt	4	M8*25
46	5301-00008-000	flat washer	4	Φ8
47	5201-00008-000	nut	8	M8
48	TC02-11000-000	front ramp	2	
49	TC02-00009-000	front roller	4	
50	5304-00016-000	circlips	8	
51	TC02-00014-000	front ramp pin	2	
52	TC02-15007-000	lock pin	6	
53	TC02-15008-000	β-pin	6	Φ2.5
54	TC02-15005-000	short bush	12	
55	TC02-17001-000	long roller board	4	
56	TC02-15003-000	nylon roller	6	
57	TC02-15004-000	split pin	6	
58	5206-00008-000	lock nut	6	M8
59	TC02-15002-000	bush	6	
60	5105-08100-000	bolt	6	M8*100
61	TC02-15006-000	upper frame	6	
62	5120-08025-000	screw	24	M8*25
63	TC02-10000-000	outside ramp frame	4	
64	TC02-05000-000	left platform	1	

ITEM	CODE	DESCRIPTION	QTY	NOTE
65	TC02-07000-000	ramp	8	
66	TC02-15001-000	roller board	8	
67	TC02-09000-000	inside ramp frame	4	
68	TC02-05300-000	pin	2	
69	SJ03-00013-000	handle	4	
70	TC02-05003-000	chain	2	
71	TC02-00006-000	hook board	2	
72	5105-06015-000	bolt	4	M6*15
73	5101-10025-000	bolt	2	M10*25
74	TC02-04000-000	lifting frame	1	
75	5201-00010-000	nut	2	M10
76	5105-16040-000	bolt	6	M16*40
77	5303-00016-000	spring washer	7	Φ16
78	5301-00016-000	flat washer	7	Φ16
79	5105-16030-000	bolt	1	M16*30
80	5120-08012-000	bolt	12	M8*12
81	TC02-06000-000	right platform	1	
82	TC02-00001-000	position board	2	
83	TC02-00002-000	adjust plate 1#	2	
84	TC02-00003-000	adjust plate 2#	2	
85	TC02-00004-000	adjust plate 3#	2	
86	TC02-00016-000	Wheel stop (long)	2	
87	TC02-00015-000	Wheel stop (short)	2	
88	5302-00008-000	Large flat washer	4	Φ8
89	MBZ20-00	Motor pump	1	
90	5110-04030-000	screw	6	M4*30
91	JK02ES-00	Control box	1	
92	5110-04016-000	screw	4	M4*16
93	JK02-10000-000	Electro-parts	1	
94	5110-06015-000	screw	4	M6*15
95	TC02-18000-A00	Box base	1	
96	DK09-00005-000	Power switch	1	
97	5107-05015-000	screw	4	M5*15
98	JK01-20002-000	button	1	
99	JK11-00006-K00	lamp	1	
100	DJ05-00020-000	Pump base	1	

7. Troubleshooting Guide

Problem	Cause	Solution
Motor does not run.	<ol style="list-style-type: none"> 1. Blown fuse or circuit breaker 2. Incorrect voltage to motor 3. Bad wiring connections. 4. Motor up switch burned out. 5. Overhead limit switch burned out. 6. Motor windings burned out. 	<ol style="list-style-type: none"> 1. Replace blown fuse or reset circuit breaker. 2. Supply correct voltage to motor. 3. Repair and insulate all connections. 4. Replace switch. 5. Replace switch. 6. Replace motor.
Motor runs but will not raise hoist.	<ol style="list-style-type: none"> 1. Open lowering valve. 2. Pump sucking air 3. Suction stub off pump. 4. Low oil level 	<ol style="list-style-type: none"> 1. Repair or replace lowering valve. 2. Tighten all suction line fittings. 3. Replace suction stub. 4. Fill tank with ISO-32 oil
Motor runs-will raises unloaded hoist but will not raise vehicle.	<ol style="list-style-type: none"> 1. Motor running on low voltage 2. Debris in lowering valve. 3. Improper relief valve adjustment. 4. Overloading hoist 	<ol style="list-style-type: none"> 1. Supply correct voltage to motor. 2. Clean lowering valve. 3. Replace relief valve cartridge. 4. Check vehicle weight and/or balance vehicle weight on lift.
Lift slowly settles down.	<ol style="list-style-type: none"> 1. Debris in check valve seat. 2. Debris in lowering valve seat. 3. External oil leaks 	<ol style="list-style-type: none"> 1. Clean check valve. 2. Clean lowering valve. 3. Repair external leaks.
Slow lifting speed or oil blowing out filler breather cap	<ol style="list-style-type: none"> 1. Air mixed with oil. 2. Air mixed with oil suction. 3. Oil return tube loose 	<ol style="list-style-type: none"> 1. Change oil to ISO-32 oil 2. Tighten all suction line fittings. 3. Reinstall oil return tube.

SAFETY OPERATING PROCEDURES

Vehicle Hoist

DO NOT use this machine unless you have been instructed in its safe use and operation and have been given permission

PERSONAL PROTECTIVE EQUIPMENT



Safety glasses must be worn at all times in work areas.



Long and loose hair must be contained.



Do not stand on hoist whilst hoist is in operation.



Sturdy footwear must be worn at all times in work areas.



Close fitting/protective clothing must be worn.



Rings and jewellery must not be worn.

PRE-OPERATIONAL SAFETY CHECKS

- ✓ Locate and ensure you are familiar with all machine operations and controls.
- ✓ Ensure all guards are fitted, secure and functional. Do not operate if guards are missing or faulty.
- ✓ Ensure the vehicle hoist has operating and maintenance instructions permanently located and clearly visible.
- ✓ Check the capacity of the hoist compared to the weight of the vehicle. If vehicle is too heavy, do not proceed.
- ✓ Ensure the area is clean and clear of grease, oil.
- ✓ Check workspaces and walkways to ensure no slip/trip hazards are present.
- ✓ Check that all safety devices are in good condition.
- ✓ Ensure support arms are capable of being locked in position.
- ✓ Ensure rubber pads are in good condition on all load points.

OPERATIONAL SAFETY CHECKS

- ✓ Centre the vehicle on the hoist, ensuring the weight is evenly distributed to the front and rear.
- ✓ Identify the correct jacking points and place the lifting pads under the vehicle at the front and rear on the jacking points, ensuring contact.
- ✓ Only one person shall operate the hoist at a time.
- ✓ The hoist must not be operated unless it has a current certificate of inspection.
- ✓ Ensure the area is clear of people and equipment before operating.
- ✓ Check vehicle stability by looking at the jacking points.
- ✓ Engage manual lock.

ENDING OPERATIONS AND CLEANING UP

- ✓ Lower the vehicle hoist and switch off machine when work completed.
- ✓ Leave the equipment and work area in a safe, clean and tidy state.

POTENTIAL HAZARDS AND INJURIES

- ⓘ Falling objects.
- ⓘ Trapping hazards.
- ⓘ Crushing hazards.
- ⓘ Hair/clothing getting caught in moving machine parts.

DON'T

- ✗ Do not use faulty equipment. Immediately report suspect equipment.
- ✗ Never leave the machine running unattended.

This SWP does not necessarily cover all possible hazards associated with this equipment and should be used in conjunction with other references. It is designed as a guide to be used to compliment training and as a reminder to users prior to equipment use.



Advance AutoQuip
2 McDonald Crescent | Bassendean WA 6054
P. 08 9279 1663 | F. 08 9279 1667
W. www.aaq.net.au | E. sales@aaq.net.au

ADVANCE AUTOQUIP WARRANTY

GENERAL WARRANTY INFORMATION:

ADVANCE AUTOQUIP'S OBLIGATION UNDER THIS WARRANTY IS LIMITED TO REPAIRING OR REPLACING ANY PART OR PARTS RETURNED TO THIS FACTORY, TRANSPORTATION CHARGES PREPAID, WHICH PROVE UPON INSPECTION TO BE DEFECTIVE AND WHICH HAVE NOT BEEN MISUSED. DAMAGE OR FAILURE TO ANY PART DUE TO FREIGHT DAMAGE OR FAULTY MAINTENANCE IS NOT COVERED UNDER THIS WARRANTY. ADVANCE AUTOQUIP RESERVES THE RIGHT TO DECLINE RESPONSIBILITY WHEN REPAIRS HAVE BEEN MADE OR ATTEMPTED BY OTHERS. THIS WARRANTY DOES NOT COVER DOWNTIME EXPENSES INCURRED WHEN UNIT IS IN REPAIR. THE MODEL NAME AND SERIAL NUMBER OF THE EQUIPMENT MUST BE PROVIDED WITH ALL WARRANTY CLAIMS. THIS WARRANTY STATEMENT CONTAINS THE ENTIRE AGREEMENT BETWEEN ADVANCE AUTOQUIP AND THE PURCHASER UNLESS OTHERWISE SPECIFICALLY EXPRESSED IN WRITING. THIS NON-TRANSFERABLE WARRANTY APPLIES TO THE ORIGINAL PURCHASER ONLY. THIS WARRANTY IS APPLICABLE TO UNITS LOCATED ONLY IN AUSTRALIA. CONTACT ADVANCE AUTOQUIP FOR SPECIFIC WARRANTY PROVISIONS FOR UNITS LOCATED OUTSIDE OF THESE COUNTRIES.

STRUCTURAL COMPONENTS:

ALL STRUCTURAL AND MECHANICAL COMPONENTS OF THIS UNIT ARE GUARANTEED FOR A PERIOD OF FIVE YEARS, FROM THE DATE OF INVOICE, AGAINST DEFECTS IN WORKMANSHIP AND/OR MATERIALS WHEN LIFT IS INSTALLED AND USED ACCORDING TO RECOMMENDATIONS.

POWER UNIT:

POWER UNIT COMPONENTS (PUMP AND RESERVOIR) ARE GUARANTEED A PERIOD OF TWO YEARS, FROM THE DATE OF INVOICE, AGAINST DEFECTS IN WORKMANSHIP AND/OR MATERIALS WHEN THE LIFT IS INSTALLED AND USED ACCORDING TO RECOMMENDATIONS.

ELECTRICAL COMPONENTS:

ALL ELECTRICAL COMPONENTS (INCLUDING MOTOR) ARE GUARANTEED A PERIOD OF ONE YEAR FOR PARTS ONLY (EXCLUDING LABOR), FROM THE DATE OF INVOICE, AGAINST DEFECTS IN WORKMANSHIP AND/OR MATERIALS WHEN THE LIFT IS INSTALLED AND USED ACCORDING TO RECOMMENDATIONS.

PNEUMATIC (AIR) COMPONENTS:

ALL PNEUMATIC (AIR) COMPONENTS (I.E. AIR CYLINDERS AND POPPET AIR VALVES) ARE GUARANTEED FOR ONE YEAR FOR PARTS ONLY (EXCLUDING LABOR), FROM THE DATE OF INVOICE, AGAINST DEFECTS IN WORKMANSHIP AND/OR MATERIALS WHEN THE LIFT IS INSTALLED AND USED ACCORDING TO RECOMMENDATIONS.

EXCLUSIONS:


WARRANTY DOES NOT INCLUDE CONSUMABLE ITEMS SUCH AS HYDRAULIC OIL, LIFTING PADS, OIL SEALS, VEE BELTS AND SLIDING BLOCKS.

THIS WARRANTY SUPERSEDES ALL OTHER WARRANTY POLICIES PREVIOUSLY STATED AND IN ALL OTHER ADVANCE AUTOQUIP'S PRODUCT SPECIFIC LITERATURE.

Advance AutoQuip

2 McDonald Crescent | Bassendean WA 6054
Ph: 08 9279 1663 | Fax: 08 9279 1667 | E: sales@aaq.net.au | W: www.aaq.net.au

COMMISSIONING REPORT

1. Details of Customer	 2 McDonald Crescent Bassendean WA 6054 P: 08 9279 1663 E: sales@aaq.net.au			
Customer Name:				
Installation Address:				
2. Hoist Details				
Model No: AutoLift 167262				
Hoist Type: Single Post Hoist				
Installation Date:				
3. Commissioning Report	Yes	No	N/A	Comments
Safety Devices				
Safety devices incorporated into the design of the vehicle to AS/NZS 1418.9				
Welds				
Visual check all welds completed and comply to requirement of AS/NZS 1554				
Hydraulic Equipment and Controls				
Visual check carried out for leaks				
Pneumatic Equipment and Controls				
Visual check carried out for leaks				
Safety Locks				
Safety locks tested for correct operation				
Support Pads				
Checked for good working order				
Wheel Stops				
Supplied with the hoist and in good working order				
Hoist Motion Limits				
Checked for correct operation				
Load Test and Speed Check				
Hoist checked with load for correct operation and speed control tested				
Wire Ropes				
Checked wire ropes for correct installation and tension				
Concrete Floor				
Concrete floor is a suitable depth for installation				

COMMISSIONING REPORT

Location of Vehicle Hoist & Vehicle Clearances			
Vehicle hoist or any part of the load is positioned no less than 600mm away from any fixed structure			
Provisions have been made for effective clearances above the vehicle when the hoist is in its fully raised position.			
Markings - Hoist Checked for Relevant Marking Including:			
Make & Model Number			
Serial number			
Rated Capacity			
Reference to maintenance			
Operation instructions			
Screw and Nut Gaps			
Hoist compliance plate showing design registration			
Functional Test			
Vehicle hoist has been tested and all safety devices, limit switches and control function interlocks have been tested for correct operation.			
Demonstration			
The installer has demonstrated the operation of the vehicle hoist to the owner or operator			
Electrical Equipment and Controls			
Lock off isolating switch installed			
Emergency stop button installed			
3. Details of Electrical Contractor			
Trading Name:	EC Licence Number:		
Address:	Telephone Number:		
4. Signature			
	Name:		
	Date:		
I, being the person responsible for completing the commissioning report have exercised reasonable skill and competency when completing the report and hereby certify that the vehicle hoist has been commissioned fit for use as per the Australian / New Zealand Standard 1418.9:1996 Vehicle Hoists.			