

SINGLE POST HOIST

AutoLift AL-182093



Air / Hydraulic Single Post Vehicle Hoist
1360Kg Maximum Lifting Capacity
Design Registration Approval Number: N/A
Design Code: AS1418.9-1996

INSTALLATION MANUAL & OPERATION INSTRUCTIONS



READ FIRST



DO NOT use the machine until you read and understand all the dangers, warnings and cautions in this manual.



- READ THE ENTIRE CONTENTS OF THIS MANUAL BEFORE INSTALLATION AND OPERATION. BY PROCEEDING YOU AGREE THAT YOU FULLY UNDERSTAND AND COMPREHEND THE FULL CONTENTS OF THIS MANUAL. FORWARD THIS MANUAL TO ALL OPERATORS. FAILURE TO OPERATE THIS EQUIPMENT AS DIRECTED MAY CAUSE INJURY OR DEATH.

Specifications subject to change without notice.

Note: While all due care and attention has been taken in the preparation of this document, Advance AutoQuip shall not be liable for any inaccuracies or omissions which may occur therein

Advance AutoQuip

2 McDonald Crescent | Bassendean WA 6054

Ph: 08 9279 1663 | Fax: 08 9279 1667 | E: sales@aaq.net.au | W: www.aaq.net.au

DEFINITION

1. It is a mobile hydraulic hoist, with a column structure, built and manufactured to allow the operator to work on wheels or under-doors at men's height. The raise and recent movement are obtained using a sleigh fixed to a chain connected to a hydraulic cylinder.
2. Hydra-pneumatic pump with foot control reduced dimensions and a remarkable ease of handling. Thanks to wheels an easy displacement is its main feature.
3. It has been projected for a sure use thanks to an easy and efficient manual block-The safety pin.
4. The manual safety pin permits the column carriage to be blocked during the working operation.
5. Air-hydraulic pump output pressure: 350bar(Max)

Basic Specification

Description	Capacity	Lifting Height	Overall Height	Overall Width	Overall Length
AIR / HYDRAULIC CAR HOIST	1360Kg	2" - 29/2" 50—750mm	52" 1320mm	28 1/8" 714mm	39 3/16" 995mm

Temperature:-10~40 degree

Net Weight: 127.5KGS

Gross Weight: 135KGS

Packing Size:111×73×30cm

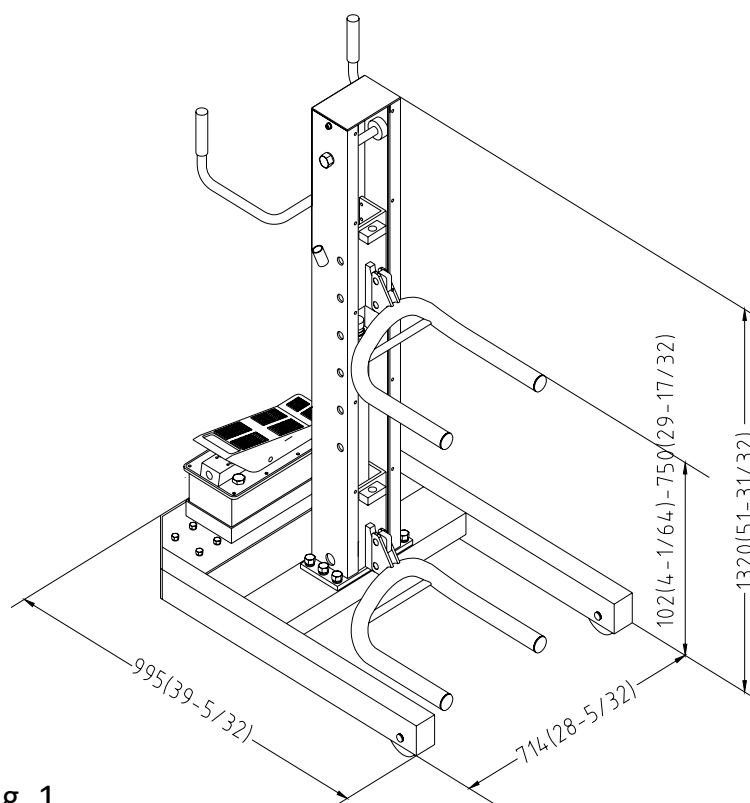


Fig. 1

TECHNICAL DESCRIPTION

The hoist consists of:

1. *The Column* - The basic part of the system consists of a specially shaped column of folded metal sheet into which the lifting carriage and cylinder are placed.
2. *The Base* - The base is D-shaped with fixed wheels at two of its ends and another two swivel ones at the opposite ends. This ensures stability and mobility.
2. *Lifting Carriage* - The carriage consists of a U-shaped structure, with two axles containing each a wheel with dry bushings, which carry the weight to hoist, a cover with a hole for the spindle, and a vertical hook at the front for holding the different attachments.
3. *Air-hydraulic foot pump* – Behind the column, there is the air-hydraulic foot pump. It supply the power to the cylinder for lifting up the weight. It is controlled by the operator's foot with great convenience.



Fig. 2

INSTALLATION

- STEP 1 Casters**
Bolt the swivel casters on the rear of the basement. (Fig 3).
- STEP 2 Column**
Bolt the handle on the column then bolt the column on the basement (Fig.4).
- STEP 3 Pump and hose**
Put on the air-hydraulic foot pump. Connect the hose from pump to cylinder (Fig. 5).
- STEP 4 Wheel fork**
Put on the wheel fork (Fig. 6) and the carriage lock bar.



Fig. 3

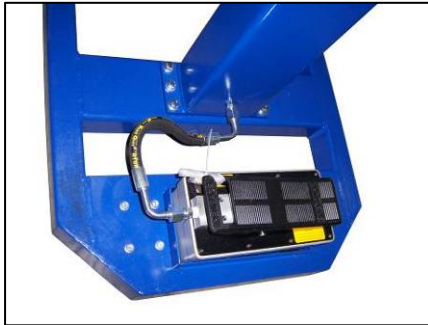


Fig. 5



Fig. 4



Fig. 6

Now the **hoist** is ready for use.

SAFTY INSTRUCTIONS AND WARNINGS:

- 1: DO NOT exceed the rated capacity:1360Kg.
- 2: DO NOT stand under the work place when the hoist is working.
- 3: This hoist is mainly for lifting. Operator only can work with the support of jack stand. Also make sure the surround situation is safe.
- 4: After lifting, operator only can start work by locking the carriage with safety lock-bar.

OPERATING INSTRUCTIONS

1. Ensure that the vehicle's rigidity is adequate for lifting.
2. Move the hoist with the handlebar.
3. Put the wheel fork under desired position, i.e. at the front or rear wheel of the vehicle you want to lift.(Fig.7)
4. Connect the compressed air hose to air-hydraulic foot pump.



Fig. 7



Fig.8

5. Before lifting the vehicle, make sure the engine is turned off. **Check for clearance around vehicle. Loosen the handbrake and put the transmission in neutral.**
6. Press down the foot lever to lift up the wheel to desired height of the vehicle is reached (Fig. 8)
7. Lock the carriage by putting the safety bar into the column then release the lever.(Fig. 8)
8. To lower down the vehicle, first press down the foot lever again to lift up the carriage a little. Take out the safety bar. Then release the lever. The vehicle will lower down by its gravity.
9. In case you want to lift the vehicle by the body frame instead of by a wheel,

you will have to replace the holding device.

To do this, follow the next steps:

- a. Lift up the far end of the wheel fork, then take it out from the groove on the carriage.
- b. Insert the frame adaptor into the groove (Fig. 9).



Fig. 9



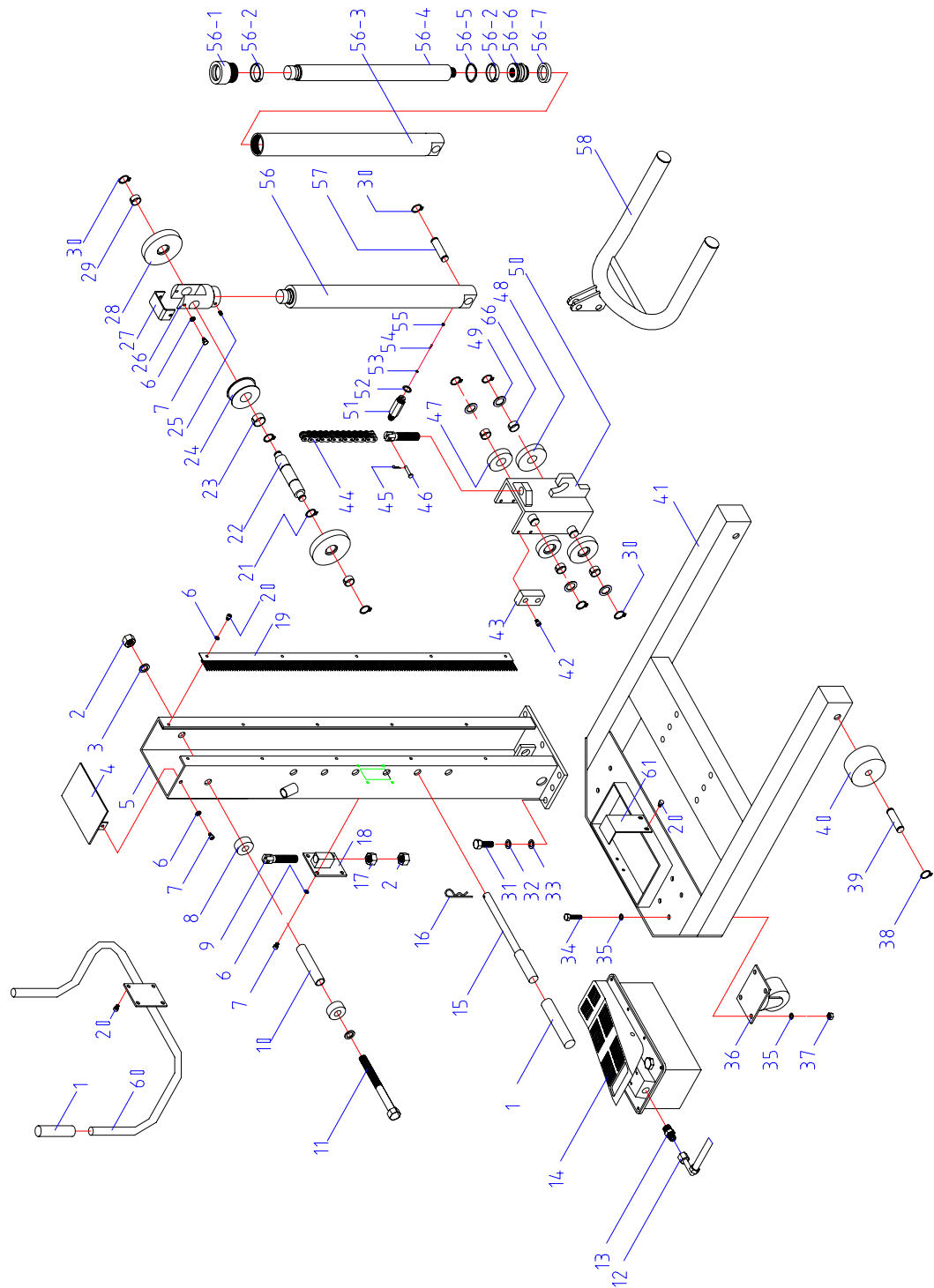
Fig. 10

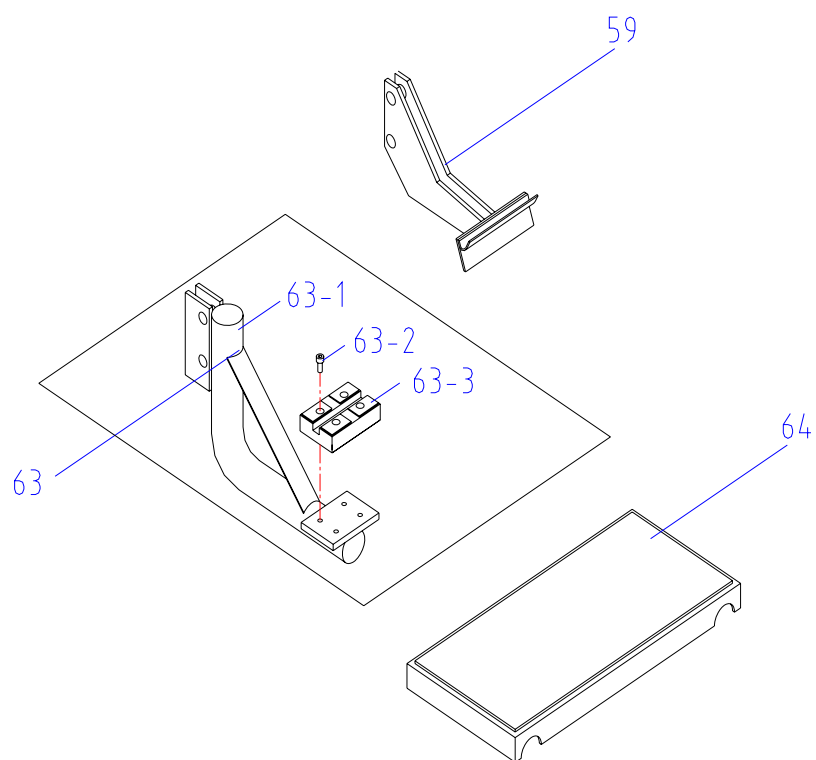
10. While using the frame adapter to lift up the vehicle, remember to position the adapter on the gravity center line of the vehicle. That is to lift up the whole side of the vehicle.(Fig.10)

Suggestion:

- a. The position on the frame near under the vehicle's side-view mirror is a good place for the adapter..
- b. Remember that the holding place has to be a strongest area of the frame with stability. Never to be in the center of the vehicle or at the back.

PARTS DRAWING





PARTS CODE LIST

ITEM	CODE	DESCRIPTION	QTY	NOTE
1	ES04-00010-000	Handle sleeve	3	
2	5206-00016-000	Hex nylon locknut	3	
3	5302-00016-000	Flat washer	2	φ16
4	SL01-05000-000	column cover	1	
5	SL01-01000-000	Column	1	
6	5302-00006-000	Flat washer	18	φ6
7	5104-06012-000	Hex bolt	8	M6*12
8	SL01-00002-000	block wheel	2	
9	SL01-00001-000	long bolt	2	
10	SL01-00022-000	Bush	1	
11	SL01-00007-000	Hex bolt	1	M16*195
12	SL01-00014-000	Oil pipe	1	
13	SL01-00015-000	Extension connector	1	
14	QY030S-00	Air-Hydraulic Foot Pump	1	
15	SL01-00008-000	lock bar	1	
16	SJ01-00033-000	β pin	1	
17	5202-00016-000	Hex nut	2	M16
18	SL01-02000-000	Chain basement	1	
19	SL01-00020-000	Protective brush	2	
20	5110-06008-000	Cross recess head screw	16	M6*8
21	5304-00025-000	Circlip for shaft	2	φ25
22	SL01-00006-000	Wheel axle	1	
23	SL01-12002-000	Oil less bearing	1	
24	SL01-12001-000	roller	1	
25	5109-06010-000	socket screws with flat point	1	M6*10
26	SL01-00004-000	Roller seat	1	
27	SL01-00017-000	Protective housing	1	
28	SL01-11001-000	Roller(III)	2	
29	SL01-11002-000	Oil less bearing	2	
30	5304-00020-000	Circlip for shaft	8	φ20
31	5104-12040-000	Hex bolt	6	M12*40
32	5306-00012-000	Spring washer	6	φ12
33	5302-00012-000	Flat washer	6	φ12
34	5102-08020-000	Hex bolt	8	M8*20
35	5302-00008-000	Flat washer	16	φ8
36	SL01-00012-000	swivel Caster	2	
37	5206-00008-000	Hex nylon locknut	8	M8
38	5304-00016-000	Circlip for shaft	4	φ16
39	SL01-00011-000	Wheel axle	2	

ITEM	CODE	DESCRIPTION	QTY	NOTE
40	SL01-00010-000	Wheel	2	
41	SL01-04000-000	basement	1	
42	5105-06020-000	socket head cap screw	4	M6*20
43	SL01-00013-000	Sliding block	2	
44	SL01-00003-000	Chain	1	
45	SJ13-00030-000	β pin	2	
46	SL01-00016-000	chain shaft	2	
47	SL01-09001-000	Roller(I)	2	
48	SL01-10001-000	Roller(II)	2	
49	5302-00020-000	flat washer	4	φ20
50	SL01-03000-000	carriage body	1	
51	SL01-00005-000	Oil connector	1	
52	5903-00014-000	Combined Washer	1	
53	JP17-04005-000	Throttle valve	1	
54	QY02-02101-000	Spring	1	
55	JP17-04004-000	Liner	1	
56	SL01-07000-000	cylinder	1	
56-1	SL01-07004-000	Guide circle	1	
56-2	SL01-07002-000	Guide ring	2	
56-3	SL01-07100-000	cylinder body	1	
56-4	SL01-07003-000	Piston rod	1	
56-5	5901-00335-000	O-ring	1	φ33.5*φ3.55
56-6	SL01-07001-000	Piston	1	
56-7	5901-00300-000	seal	1	φ40*φ30*65
57	SL01-00019-000	Shaft	1	
58	SL01-06000-000	wheel fork	1	
59	SL01-08000-000	frame adapter	1	
60	SL01-13000-000	handle	1	
61	SL01-00023-000	board	1	
63	SL01-14000-FJ2	option 2#	1	
63-1	SL01-14100-FJ2	frame(3)	1	
63-2	5105-08016-000	socket screw	4	
63-3	SL01-14001-FJ2	rubber pad	1	
64	SL01-16000-FJ3	option (3#)	1	
66	SL01-09002-000	bearing	4	



ADVANCE AUTOQUIP WARRANTY

GENERAL WARRANTY INFORMATION:

ADVANCE AUTOQUIP'S OBLIGATION UNDER THIS WARRANTY IS LIMITED TO REPAIRING OR REPLACING ANY PART OR PARTS RETURNED TO THIS FACTORY, TRANSPORTATION CHARGES PREPAID, WHICH PROVE UPON INSPECTION TO BE DEFECTIVE AND WHICH HAVE NOT BEEN MISUSED. DAMAGE OR FAILURE TO ANY PART DUE TO FREIGHT DAMAGE OR LACK OF MAINTENANCE IS NOT COVERED UNDER THIS WARRANTY. ADVANCE AUTOQUIP RESERVES THE RIGHT TO DECLINE RESPONSIBILITY WHEN REPAIRS HAVE BEEN MADE OR ATTEMPTED BY OTHERS, OR WHERE NON GENUINE PARTS HAVE BEEN USED. THIS WARRANTY DOES NOT COVER DOWNTIME EXPENSES INCURRED WHEN UNIT IS IN REPAIR. ADVANCE AUTOQUIP ARE NOT LIABLE FOR POSSIBLE ISSUES, DAMAGES, ACCIDENTS ETC RESULTING FROM FAILURE TO FOLLOW THE OPERATION OR INSTALLATION INSTRUCTIONS CONTAINED IN THE MANUAL OR ON THE EQUIPMENT. THE MODEL NAME AND SERIAL NUMBER OF THE EQUIPMENT MUST BE PROVIDED WITH ALL WARRANTY CLAIMS. THIS WARRANTY STATEMENT CONTAINS THE ENTIRE AGREEMENT BETWEEN ADVANCE AUTOQUIP AND THE PURCHASER UNLESS OTHERWISE SPECIFICALLY EXPRESSED IN WRITING. THIS NON-TRANSFERABLE WARRANTY APPLIES TO THE ORIGINAL PURCHASER ONLY. THIS WARRANTY IS APPLICABLE TO UNITS LOCATED ONLY IN AUSTRALIA. CONTACT ADVANCE AUTOQUIP FOR SPECIFIC WARRANTY PROVISIONS FOR UNITS LOCATED OUTSIDE OF THESE COUNTRIES.

NOTE: THE EQUIPMENT IS NOT TO BE USED FOR WASH DOWN PURPOSES OR TO BE INSTALLED IN AN OUTDOOR ENVIRONMENT WHERE IT IS SUBJECT TO WEATHER OR WATER DAMAGE. WARRANTY WILL BE IMMEDIATELY VOID.

STRUCTURAL COMPONENTS:

ALL STRUCTURAL AND MECHANICAL COMPONENTS OF THIS UNIT ARE GUARANTEED FOR A PERIOD OF FIVE YEARS, FROM THE DATE OF INVOICE, AGAINST DEFECTS IN WORKMANSHIP AND/OR MATERIALS WHEN LIFT IS INSTALLED AND USED ACCORDING TO RECOMMENDATIONS.

POWER UNIT:

POWER UNIT COMPONENTS (PUMP AND RESERVOIR) ARE GUARANTEED A PERIOD OF ONE YEAR, FROM THE DATE OF INVOICE, AGAINST DEFECTS IN WORKMANSHIP AND/OR MATERIALS WHEN THE LIFT IS INSTALLED AND USED ACCORDING TO RECOMMENDATIONS.

ELECTRICAL COMPONENTS:

ALL ELECTRICAL COMPONENTS (INCLUDING MOTOR) ARE GUARANTEED A PERIOD OF ONE YEAR FOR PARTS ONLY (EXCLUDING LABOR), FROM THE DATE OF INVOICE, AGAINST DEFECTS IN WORKMANSHIP AND/OR MATERIALS WHEN THE LIFT IS INSTALLED AND USED ACCORDING TO RECOMMENDATIONS.

PNEUMATIC (AIR) COMPONENTS:

ALL PNEUMATIC (AIR) COMPONENTS (I.E. AIR CYLINDERS AND POPPET AIR VALVES) ARE GUARANTEED FOR ONE YEAR FOR PARTS ONLY (EXCLUDING LABOR), FROM THE DATE OF INVOICE, AGAINST DEFECTS IN WORKMANSHIP AND/OR MATERIALS WHEN THE LIFT IS INSTALLED AND USED ACCORDING TO RECOMMENDATIONS.

EXCLUSIONS:

WARRANTY DOES NOT INCLUDE CONSUMABLE ITEMS SUCH AS HYDRAULIC OIL, LIFTING PADS, OIL SEALS, VEE BELTS AND SLIDING BLOCKS.

THIS WARRANTY SUPERSEDES ALL OTHER WARRANTY POLICIES PREVIOUSLY STATED AND IN ALL OTHER ADVANCE AUTOQUIP'S PRODUCT SPECIFIC LITERATURE.

Advance AutoQuip

2 McDonald Crescent | Bassendean WA 6054

Ph: 08 9279 1663 | Fax: 08 9279 1667 | E: sales@aaq.net.au | W: www.aaq.net.au

SAFETY OPERATING PROCEDURES

Vehicle Hoist

DO NOT use this machine unless the operator has been thoroughly instructed in its safe use and operation.



Safety glasses must be worn at all times in work areas.



Long and loose hair must be contained.



Sturdy footwear must be worn at all times in work areas.



Close fitting/protective clothing must be worn.



Rings and jewellery must not be worn.



Do not stand on hoist whilst hoist is in operation.

A vehicle hoist must not be operated unless it has a current certificate of inspection.

PRE-OPERATIONAL SAFETY CHECKS

1. Ensure that vehicle hoist has operating and maintenance instructions permanently located and clearly visible.
2. The equipment must be used in accordance with manufacturer's instructions.
3. Check the capacity of the hoist compared to the weight of the vehicle. If vehicle is too heavy, do not proceed.
4. Ensure the area is clean and clear of grease, oil, and objects that may be a slip/trip hazard.
5. Familiarise yourself with and check all machine operations and controls.
6. Check all safety devices are in good condition.
7. Ensure support arms are capable of being locked in position.
8. Ensure rubber pads are in good condition on all load points.
9. Faulty equipment must not be used. Immediately report suspect equipment.

OPERATIONAL SAFETY CHECKS

1. Centre vehicle on hoist, ensuring that the weight is evenly distributed to the front and rear.
2. Identify the correct jacking points.
3. Only one person shall operate the hoist at a time.
4. Ensure hoist area is clear of people and equipment before operating.
5. Never leave the hoist running unattended.
6. Check vehicle stability by looking at the jacking points.
7. Engage and check for the correct engagement of the locks.
8. At the completion of work lower the vehicle hoist and ensure all equipment is left in a safe position.

HOUSEKEEPING


1. Switch off equipment.
2. Leave the equipment and work area in a safe, clean and tidy state.

POTENTIAL HAZARDS

■ Falling objects ■ Trapping hazards ■ Crushing hazards ■ Entanglement hazards

This Safety Operating Procedure does not necessarily cover all possible hazards associated with the machine and should be used in conjunction with other references. It is designed to be used as an adjunct to the operation in the safety procedures and to act as a reminder to the operator prior to machine use.

COMMISSIONING REPORT

1. Details of Customer		 <p>2 McDonald Crescent Bassendean WA 6054 P: 08 9279 1663 E: sales@aaq.net.au</p>			
Customer Name:					
Installation Address:					
2. Hoist Details					
Model No:					
Hoist Type:					
Installation Date:					
3. Commissioning Report		Yes	No	N/A	Comments
Safety Devices					
Safety devices incorporated into the design of the vehicle to AS/NZS 1418.9					
Welds					
Visual check all welds completed and comply to requirement of AS/NZS 1554					
Hydraulic Equipment and Controls					
Visual check carried out for leaks					
Pneumatic Equipment and Controls					
Visual check carried out for leaks					
Safety Locks					
Safety locks tested for correct operation					
Support Pads					
Checked for good working order					
Wheel Stops					
Supplied with the hoist and in good working order					
Hoist Motion Limits					
Checked for correct operation					
Load Test and Speed Check					
Hoist checked with load for correct operation and speed control tested					
Wire Ropes					
Checked wire ropes for correct installation and tension					
Concrete Floor					
Concrete floor is a suitable depth for installation					

COMMISSIONING REPORT

Location of Vehicle Hoist & Vehicle Clearances				
Vehicle hoist or any part of the load is positioned no less than 600mm away from any fixed structure				
Provisions have been made for effective clearances above the vehicle when the hoist is in its fully raised position.				
Markings - Hoist Checked for Relevant Marking Including:				
Make & Model Number				
Serial number				
Rated Capacity				
Reference to maintenance				
Operation instructions				
Screw and Nut Gaps				
Hoist compliance plate showing design registration				
Functional Test				
Vehicle hoist has been tested and all safety devices, limit switches and control function interlocks have been tested for correct operation.				
Demonstration				
The installer has demonstrated the operation of the vehicle hoist to the owner or operator				
Electrical Equipment and Controls				
Lock off isolating switch installed				
Emergency stop button installed				
3. Details of Electrical Contractor				
Trading Name:	EC Licence Number:			
Address:	Telephone Number:			
4. Signature				
		Name:		
		Date:		
I, being the person responsible for completing the commissioning report have exercised reasonable skill and competency when completing the report and hereby certify that the vehicle hoist has been commissioned fit for use as per the Australian / New Zealand Standard 1418.9:1996 Vehicle Hoists.				