

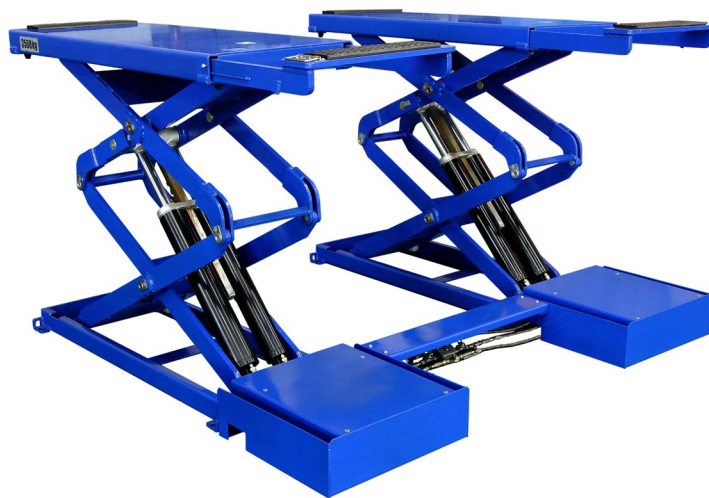
SCISSOR HOIST

AutoLift AL-3000BG



Model No: FL-8802C, Full Rise Heavy Duty Scissor Hoist
3000Kg Maximum Lifting Capacity
Design Registration Approval Number: WAH21632
Design Code: AS1418.9-1996

INSTALLATION MANUAL & OPERATION INSTRUCTIONS



READ FIRST



DO NOT use the machine until you read and understand all the dangers, warnings and cautions in this manual.



- READ THE ENTIRE CONTENTS OF THIS MANUAL BEFORE INSTALLATION AND OPERATION. BY PROCEEDING YOU AGREE THAT YOU FULLY UNDERSTAND AND COMPREHEND THE FULL CONTENTS OF THIS MANUAL. FORWARD THIS MANUAL TO ALL OPERATORS. FAILURE TO OPERATE THIS EQUIPMENT AS DIRECTED MAY CAUSE INJURY OR DEATH.

Specifications subject to change without notice.

Note: While all due care and attention has been taken in the preparation of this document, Advance AutoQuip shall not be liable for any inaccuracies or omissions which may occur therein

Advance AutoQuip

2 McDonald Crescent | Bassendean WA 6054

Ph: 08 9279 1663 | Fax: 08 9279 1667 | E: sales@aaq.net.au | W: www.aaq.net.au

<i>USER'S RECORD</i>	3
<i>RECORD OF INSTALLATION</i>	4
<i>SAFETY INSTRUCTIONS</i>	5
<i>INTRODUCTION</i>	6
<i>WARNING SIGNS</i>	7
<i>INSTALLATION</i>	8-9
<i>OPERATION</i>	10
<i>MAINTENANCE</i>	11
<i>OVERALL SIZE</i>	12
<i>SPACE REQUIRED</i>	13
<i>HYDRAULIC DIAGRAM</i>	14
<i>HYDRAULIC CONNECTION</i>	15
<i>PNEUMATIC DIAGRAM</i>	16
<i>WIRING DIAGRAM</i>	17-18

USER'S RECORD

RECORD BELOW INFORMATION WHICH LOCATED ON THE NAME PLATE.

ITEM NO _____

SERIES NO _____

DATE OF MFG _____

The here blow listed persons have been qualified to use the machine after installation. The course for use and maintenance has been carried out by a qualified technician.

1.

2.

3.

4.

.....

RECORD OF INSTALLATION

MODEL NO _____

SERIES NO _____

CUSTOMER _____

DATE OF INSTALLATION _____

WE HEREBY DECLARED THAT THE ABOVE MENTIONED MACHINE HAS BEEN INSTALLED CORRECTLY. ALL FUNCTIONS HAVE BEEN CHECKED AS WELL AS CORRECT OPERATING OF ALL SAFETY DEVICES.

WE CONSIDER THEREFORE THE MACHINE WORK IN GOOD CONDITIONS IN ALL RESPECTS.

Date of Installation

The authorized technician

The customer

SAFETY INSTRUCTIONS

(READ THE INSTRUCTIONS ENTIRELY BEFORE OPERATING)

1. Do not install the lift on any asphalt surface
2. Read and understand all safety warning procedures before operating the lift.
3. The lift, in its standard version, is not designed for outdoor use.
4. Keep hands and feet away from any moving parts. Keep feet clear of lift when lowering.
5. The lift may only be used by qualified staff, properly trained for the specific use of the machine.
6. Do not wear unfit clothes such as large clothes with flounces, tires, etc, which could get caught by moving parts of the machine.
7. The lift surrounding area must be free from people or objects which could be a danger for lifting operations.
8. The lift is only designed to lift the entire body of vehicle, having maximum weight not more than the lift capacity.
9. Always insure the safety devices are engaged before any attempt to work on or near vehicle.
10. The vehicle must be centered and positioned in a stable correct way with respect to the posts and following the instructions given by manufacturer.
11. Make sure that the machine and its devices are working correctly, according to the specific instructions for maintenance.
12. Lower the lift to its lowest position when service finish.
13. Do not modify the machine without manufacturer's advice.
14. If the machine is not to be used any more, owners are suggested to make it unusable by removing the power supply connections, emptying the oil tank and disposing the liquids by right way.
15. If the lift is to be left unused for a long period, proceed as follows:
 - a. Disconnect the energy source;
 - b. Empty the control unit tank.
 - c. Grease the moving parts which might be damaged by dust or drying out.

INTRODUCTION

This guide has been made in order to supply the owner as well the user with the basic instructions for a correct installation, operation and maintenance of the lift.

Read this guide carefully before using the machine and follow the instructions given by this guide carefully to grant the machine a correct function, efficiency and a long service life.

INTENDED USE

The lift has been designed and constructed for lifting vehicles with the sole purpose of performing service, repairing and inspection. Any other use not described is to be considered as improper and irrational, and thus it will be under the whole responsibility of the operator.

The full rise scissor lift is suitable for lifting motor vehicles having maximum total weight of 3000kg/6600 Pounds .

This appliance must be only used for the purpose of which it is expressly designed. It is forbidden to lift people or others not specified in this manual. Any other use is to be considered improper and irrational and thus highly forbidden.

The constructor cannot be held responsibilities for any damage or injuries caused by an improper use or by the non-observance of the following instructions:

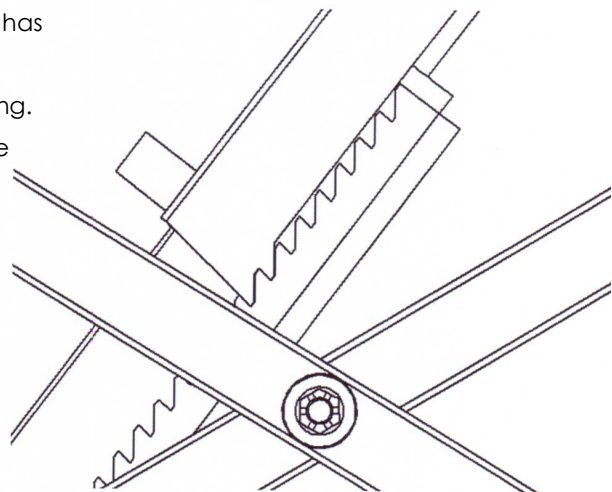
The lift, in its standard version, is not intended for outdoor use, in this case, it is necessary to ask the constructor for a special version.

SAFETY SYSTEM

Besides the reliable hydraulic system, this scissor lift also has a strong safety locking system as showing. right

The safety teeth will automatically engaged when raising.

But, ensures to press teeth engaged button to lower the whole machine until teeth engaged, then go under the vehicle.



TECHNICAL DATA

Lifting height	1800mm after installation.
Lifting capacity	3500kg
Lifting time	50S
Power supply	380V, three phase , 220V, single phase

(Please see nameplate before connecting)

1) Noise level : <70 dBA (measured from 1m distance surround the machine);

2) THE OPERATING CONDITION OF THE LIFT



The temperature of operation :-15+40



Altitude: below 1000m;

Relative humidity: 30%~90%

The temperature of transporting and storage: -25~+55;

The temperature of transporting and storage in 24 hours: -25~+70

		Zhejiang Friend Automotive Equipment Co.Ltd Tel: +86-571-58506793 Fax: +86-571-58506793 Add: No. 168 Chaimei Rd., Tong Lu Economic & Development Zone, Hangzhou P. R. China. 311508		
PN	In-ground Scissor Lift	MODEL NO.	FL-8802C	
V/HZ	380V/50HZ	CAPACITY	3500kg	
PH	3~	IP	54	
kw	2.2kw	MADE IN CHINA 		
kg	820kg			
S/N		M	D	Y

		Zhejiang Friend Automotive Equipment Co.Ltd Tel: +86-571-58506793 Fax: +86-571-58506793 Add: No. 168 Chaimei Rd., Tong Lu Economic & Development Zone, Hangzhou P. R. China. 311508		
PN	In-ground Scissor Lift	MODEL NO.	FL-8802CB	
V/HZ	220V/50HZ	CAPACITY	3500kg	
PH	1~	IP	54	
kw	2.2kw	MADE IN CHINA 		
kg	820kg			
S/N		M	D	Y

WARNING SIGNS

All safety warning signs presented on the machine with the purpose to draw the operator's attention from dangerous or unsafe situations. The labels must be kept clean and they have to be replaced if detached or damaged. Read the meaning of the labels carefully and memorize it.



Warning 1



Warning 2



Warning 3



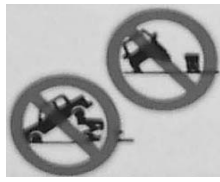
Warning 4



Warning 5



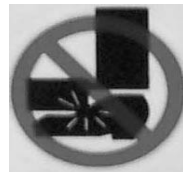
Warning 6



Warning 7



Warning 8



Warning 9



Warning 10



Warning 11

Warning 12

Warning 13

Warning 14

- Warning 1 It is not allowed to stay under the being serviced vehicle during operation.
- Warning 2 Operator and standby should not stay too close to the machine, but in the safety place.
- Warning 3 When the lift lowers, no auxiliary stand or wooden stick is allowed to use.
- Warning 4 Do not shake the vehicle hard, when it still lays on the lift runways.
- Warning 5 Only trained technician is permitted to operate the lift.
- Warning 6 Take care of your feet when the equipment lifts and lowers.
- Warning 7 It is not allowed to lift or lower just one side track.
- Warning 8 Do not change safety system of the lift.
- Warning 9 Take notice of you feet when the lift lowers.
- Warning 10 Ensure the lifting weight balanced on two runways to avoid tilting and sliding.
- Warning 11 Keep clean in equipment groove.
- Warning 12 Please read carefully the operation manual before use the machine.
- Warning 13 Keep the being serviced car parallel with the lifting runways
- Warning 14 High voltage in control box.

INSTALLATION

BEFORE INSTALLATION

1. Identify the components and check for shortages. Contact us immediately if shortage discovered.
2. Installation, adjusting and testing operations are to be performed by qualified staff only.
3. The lift must be installed on a level concrete floor, having minimum thickness of 15cm and an extension of at least 1.5m from anchoring points.
4. The lift installation concrete surface must be relatively smoothes, leveled in all directions
5. After unloading the lift, place it near the intended installation location.
Remove the shipping brands and packing materials from the unit.
Remove the packing brackets and bolts holding the two columns together.

SPACE REQUIRED

Prepare ground base according to the **SPACE REQUIREMENT DRAWING**.

The concrete's thickness should be $\geq 150\text{mm}$ and the error of levelness should be $\leq 5\text{mm}$ when the ground condition is good.

AIR SOURCE REQUIRED

The air compressor network must be preset by user and it must be equipped with a pressure regulator and a lubricator with pressure between 8 and 10 bar.

ELECTRICAL SYSTEM

Any work on the electrics must be carried out by qualified personnel only.

Equip the electric system of installation place with effective ground circuit.

The electric system adjusting must be made in accordance with the nameplate showing.

CONNECTING

You may start to connect oil hose, air supply and power after the above preparations.

1. OIL HOSE CONNECTING

See the hydraulic diagram for oil hose connecting. Make sure that no soil or other dirty things into the pipe.

2. POWER AND AIR CONNECTION

Connect power line according to the electric diagram

Three black lines are phase wire, and blue line is N wire. Yellow and green line is for grounding. Connect air hose ($\Phi 10 \times \Phi 7 \text{mm}$) (provided by user) with the air inlet hole of the oil spray.

3. REFILL THE TANK

Pour 16 litres of L-HM32 anti-wear hydraulic oil (provided by user) into oil tank. The highest level should be 10mm from the top of the tank and the lowest level should be 40mm from the top of the tank (check with the detective ruler on the oil pouring air cover).

4. SYNCHRONIZING

Connecting with power supply, the indicator is on.

Press UP button, checking running of motor. Make sure that the rotating of motor is anticlockwise, if not, cut off power source then change the inlet orders.

If the motor works in right way, commissioning follows.

Switch on the synchronization valve, press up button until two platforms reach the top limit.

Press DOWN button to lower the platforms to the complete bottom.

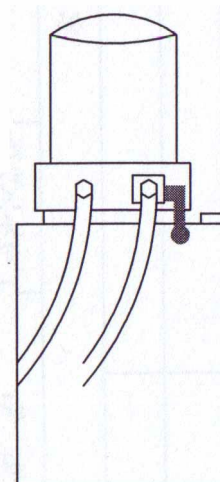
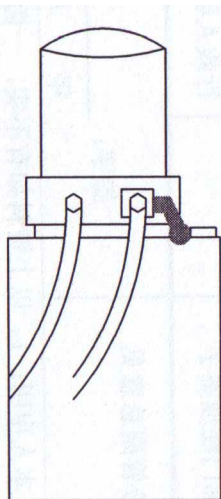
Try the above operation twice.

Switch off the valve.

Now, the lift is in normal working status and two platforms should be synchronized well.

If still not synchronized, press UP button with synchronization valve on, and switch off valve at any height when two platforms at same level.

Press DOWN button until lowest height.



A. Switch on the valve to refill the assistant cylinder

B. Normal working status

5. CONNECTING THE LIMITATION SWITCH.

6. BASE FRAME FIXED.

Fix the frame with expansion bolt.

7. LOADING TEST

Never try to use the lift with vehicle on without testing firstly.

This step is very important to check if there is any leakage of hydraulic line connectors or air hose. Also make sure the base frame is fixed well.

If there's no abnormal noise or leakage after running two or three times, Run with load never exceeding 3000kg at a low height.

Then raise higher gradually.

If two platforms are not level, do the operation as in SYNCHRONIZING

OPERATION

WARNING: DO NOT PLACE ANY VEHICLE ON THE LIFT BEFORE TRIAL OPERATION. RAISE THE LIFT UP AND DOWN SEVERAL TIMES TO INSURE LATCHES CLICK TOGETHER AND AIR EXHAUSTED FROM THE CYLINDERS.

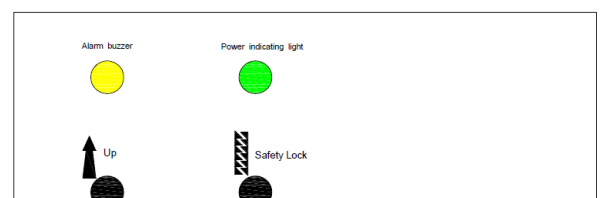
BEFORE OPERATION

- a. Check all the pipelines and joints before use. The machine only can be used after there is not any leakage.
- b. The lift, if its safety device malfunctions, shall not be used.
- c. The machine shall not raise or lower an automobile if the center of gravity of automobile is not within the supporting range of the supporting device. Otherwise, the manufacturer will not bear any responsibility for the consequence resulted from the operation above mentioned.
- d. The staff or operators shall be in a safe position when the machine raise or lower.
- e. When the lift with vehicle on reaches a desired height, first of all, the main switch must be turned off before the automobile is repaired so as to prevent non-operator or unauthorized person from pressing the start switch.
- f. Always press teeth engaged button to make the locking teeth engaged, then go under the vehicle.
Never allow anyone to go under the lift when raising or lowering.

INSTRUCTIONS FOR USE

RAISING THE LIFT

1. Make sure that you have read the operation



manual before operation.

2. Always lift the vehicle at the manufacturer recommended points.
3. Position the vehicle right on the center of two platforms.
4. Raise the lift by pressing the push button on control box until the pads touch firmly the right points and recheck if the vehicle is secure.
5. Check the security of vehicle, then perform maintenance or repair work.
6. Press safety lock to make safety teeth engaged, then work under the vehicle.

LOWERING THE LIFT

1. Press down button to lower the lift.
2. The control unit will give alarming when the lift lowered to about 800mm to ground.
3. Press button DOWN II to continue lowering, until reaching complete bottom.

MAINTENANCE

FRIEND will give the user one-year warranty of quality for the machine. If something wrong with the machine within the term of service, we will repair or replace the product according to the user's demand. The manufacturer will not take any responsibility for improper installation and operation, overload running, wrong concrete ground (that can not meet the requirements in the manual), normal mechanical abrasion and insufficient maintenance. The warranty will be carried out on the basis of the type and serial number of the equipment. Therefore, the users shall provide them to the manufacturer without fail.

The several pieces of maintenance operations to be carried out are described below. A low operating cost and a long life of the machine are from routine observation of there operations.

The listed intervention times are given for information and they refer to normal operating conditions. They can change according to the kind of service, environment, frequency of use, etc.

1. **DAILY PRE-OPERATION CHECK**

The user should perform daily check. Daily check of safety latch system is very important – the discovery of device failure before needed could save you from expensive property damage, lost production time, serious personal injury, even death.

- . Check safety lock audibly and visually while in operation
- . Check hydraulic connections, and hoses for leakage.
- . Check chain connections, cable connections, wiring and switch for damage.
- . Check bolts, nut and screws and tighten.
- . Check swing arm restraints.

2. **WEEKLY MAINTENANCE**

- . Check the cleanness of the mobile parts.
- . Check the safety device as previously described.

. Check hydraulic fluid level as follow: let the trolleys go up completely and in case they do not reach maximum height, add oil.

Check and tighten bolts, nuts and screws.

3. MONTHLY MAINTENANCE

. Check the tightening of screws

. Check the hydraulic system seal and tighten the loose unions, if necessary.

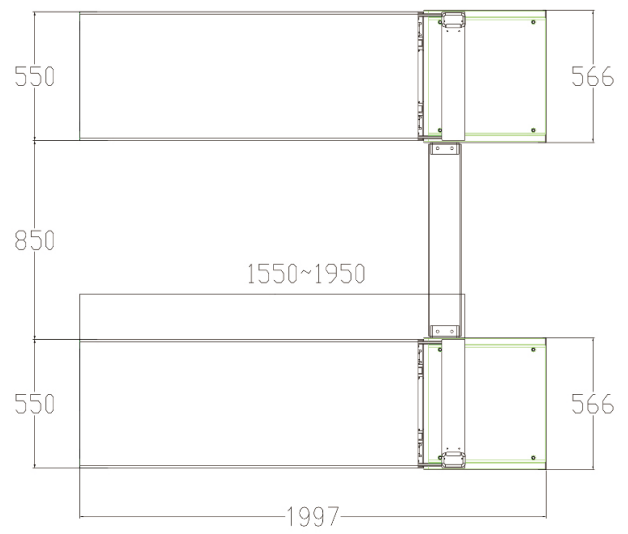
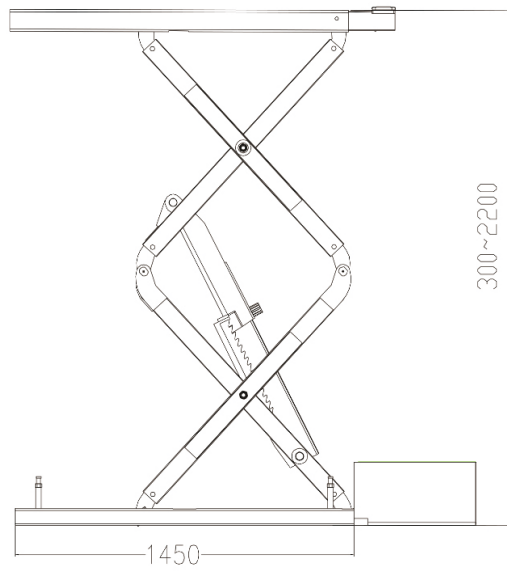
. Check the greasing and wear condition of pins, rollers, bushes, of trolley structure as well as arms and relevant extensions, if necessary, replace the damaged parts by original spare parts.

4. YEARLY MAINTENANCE

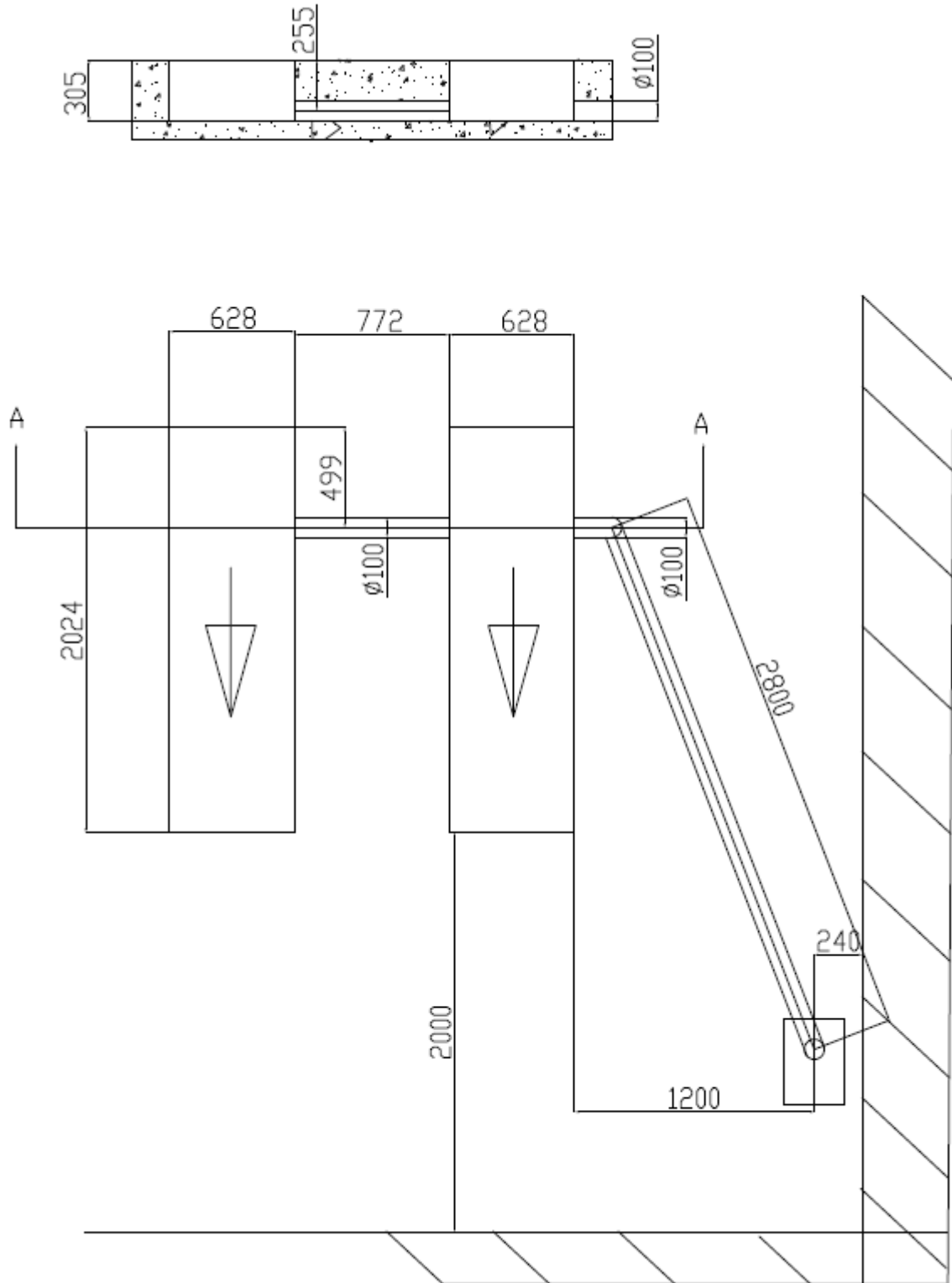
. Empty the tank and check the conditions of the hydraulic fluid. Clear the oil filter.

If the above maintenance operations are carried out, there will be an advantage for the user, who will find the equipment in perfect condition each time he restarts w

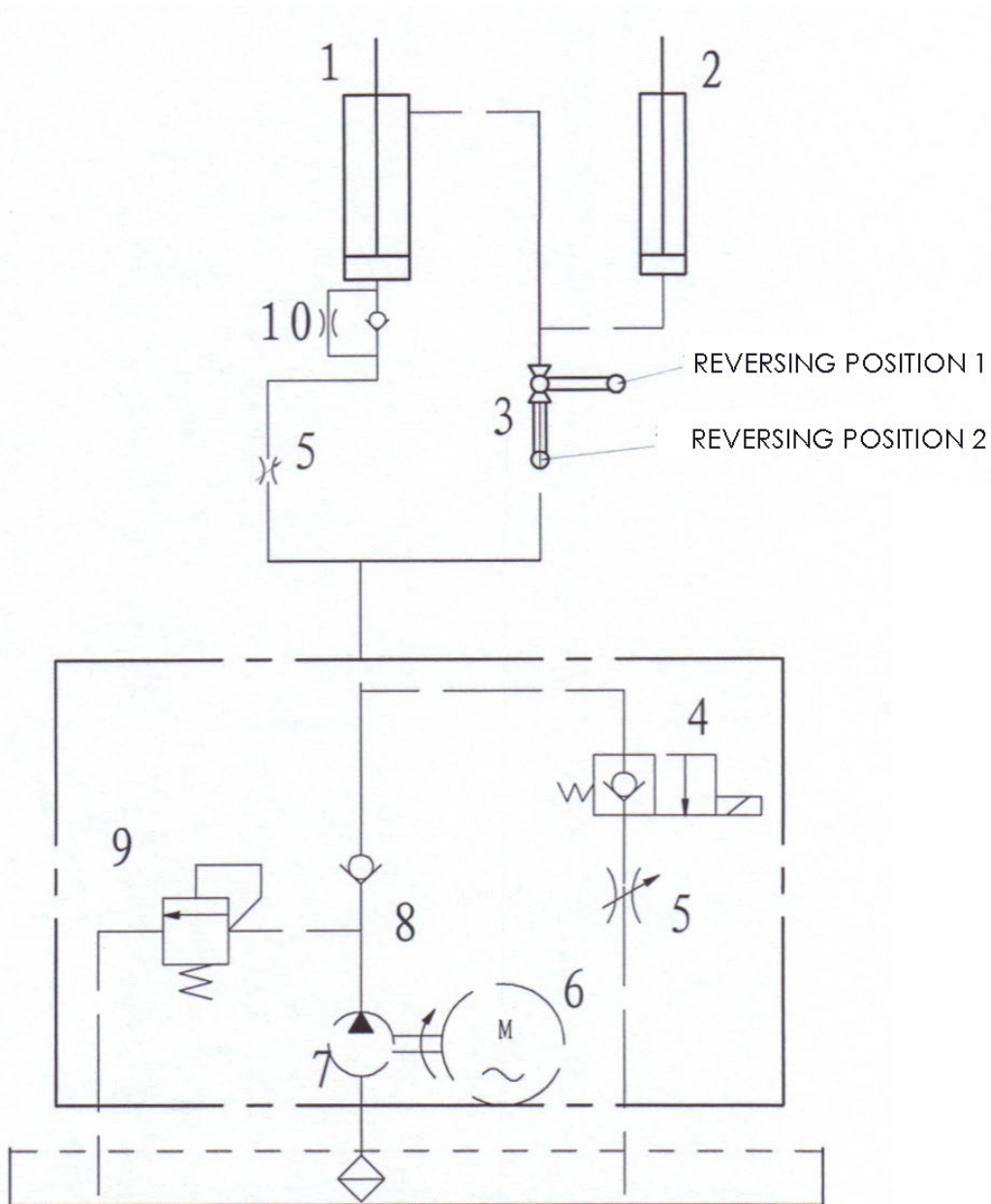
OVERALL DIAGRAM



SPACE REQUIRED

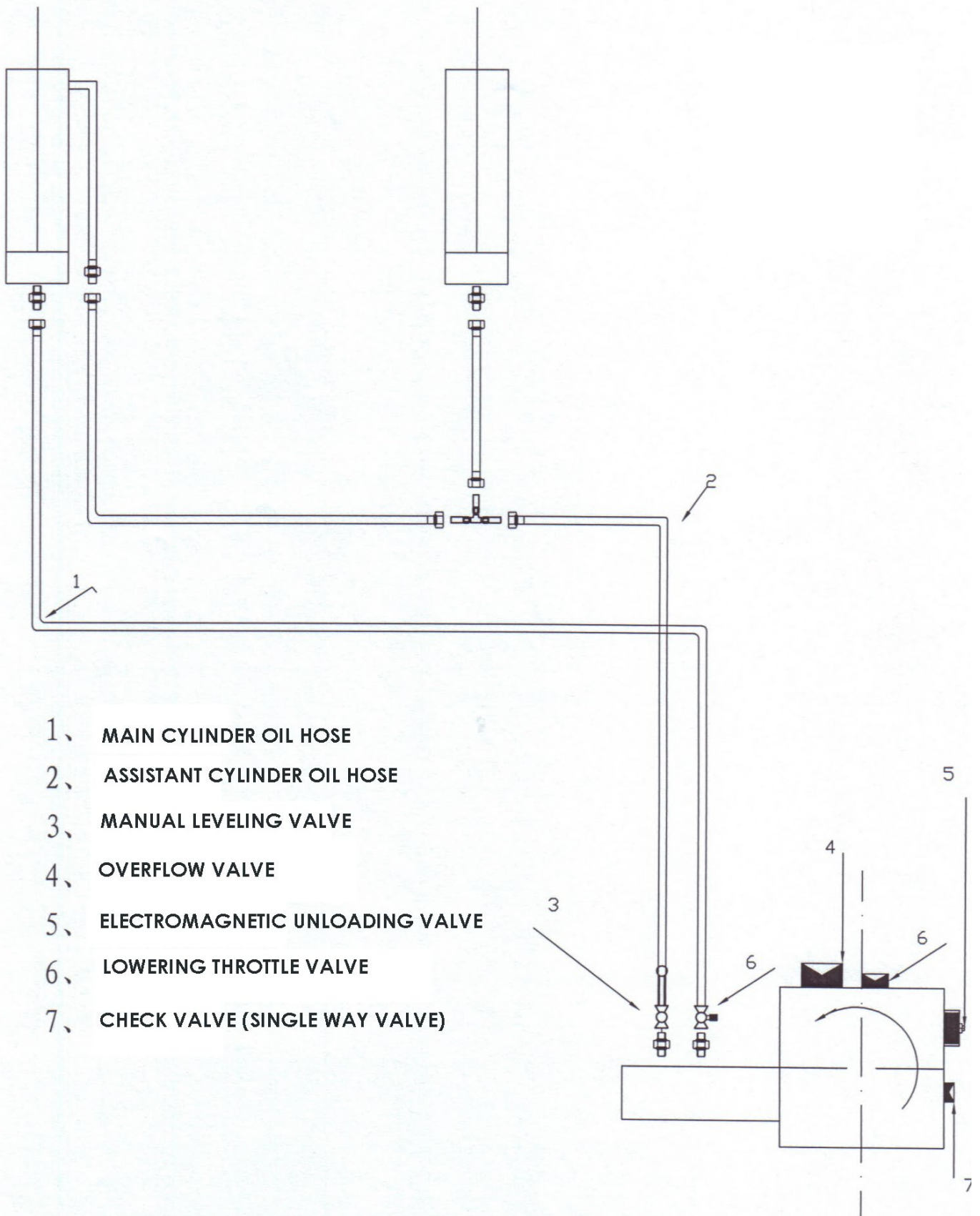


HYDRAULIC DIAGRAM

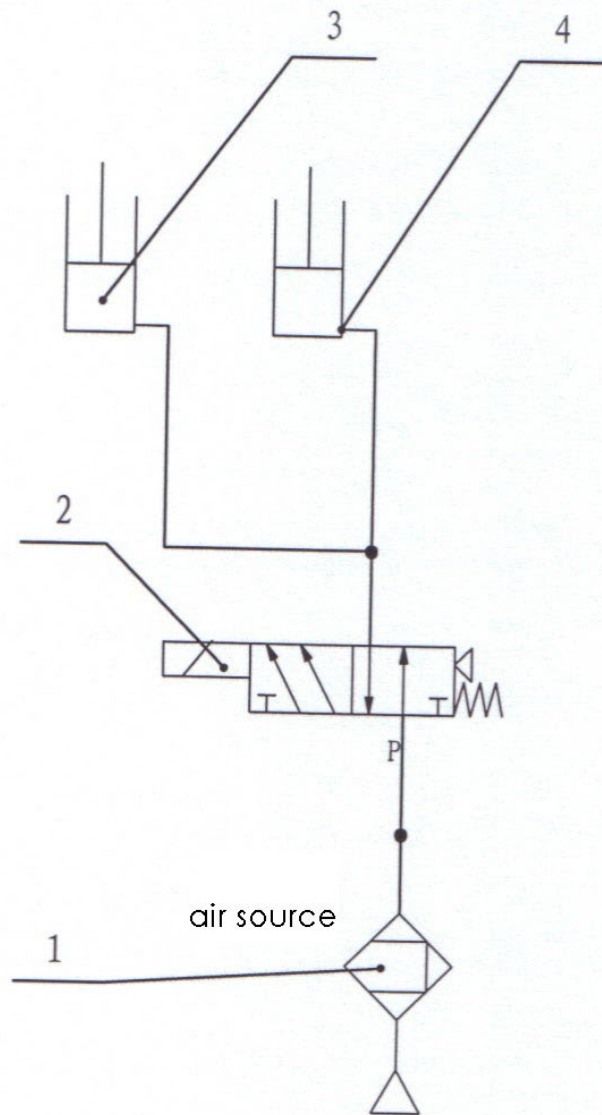


- 1. MAIN CYLINDER 2. ASSISTANT CYLINDER
- 3. MANUAL REVERSING VALVE
- 4. ELECTROMAGNETIC BALL VALVE
- 5. LOWERING THROTTLE VALVE
- 6. MOTOR 7. GEAR PUMP
- 8. CHECK VALVE
- 9. OVERFLOW VALVE
- 10. ANTI-SURGE VALVE

HYDRAULIC CONNECTION

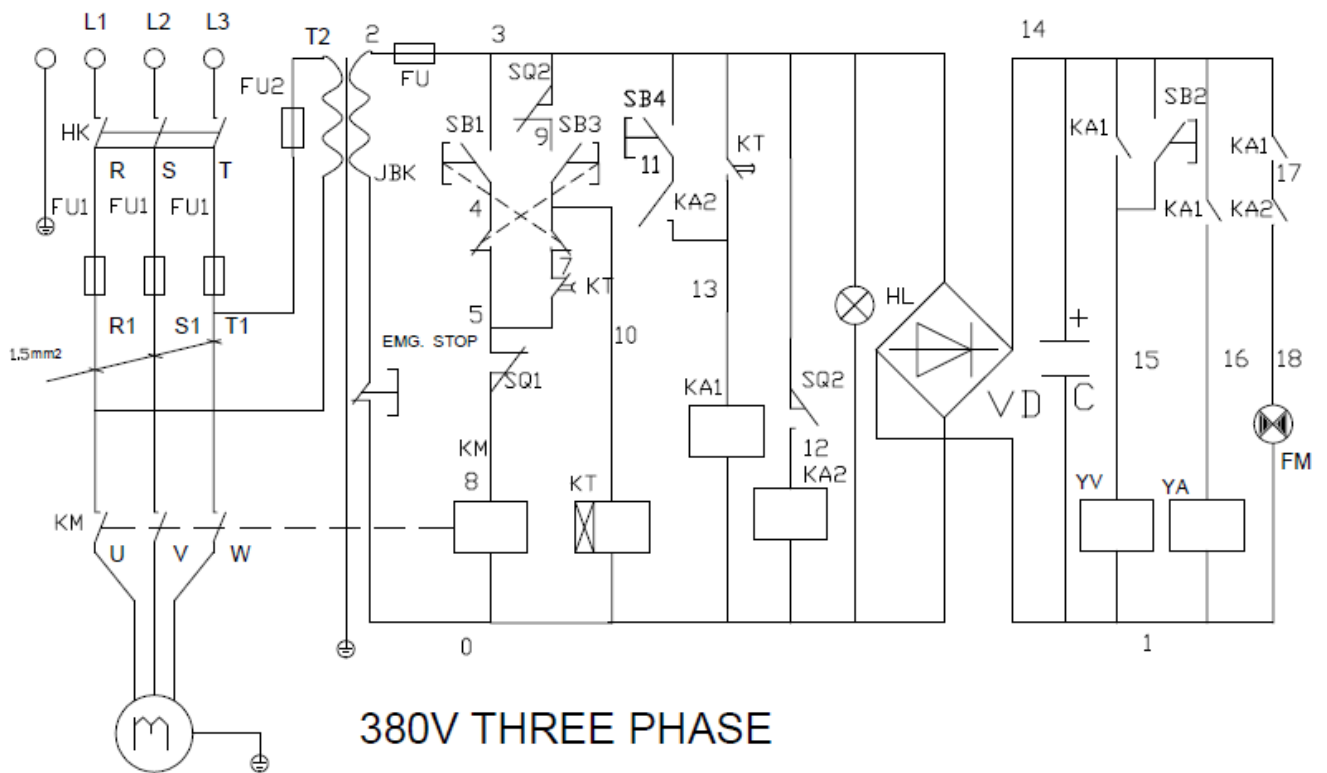
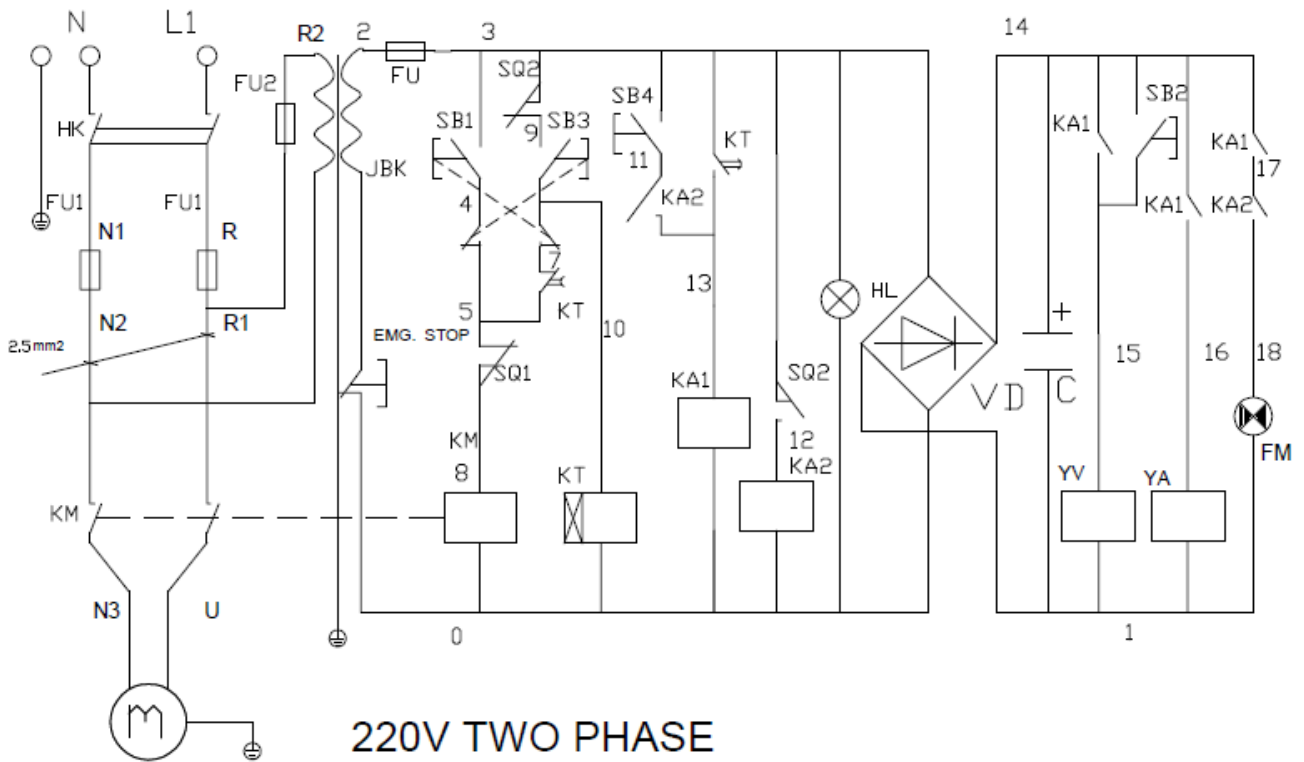


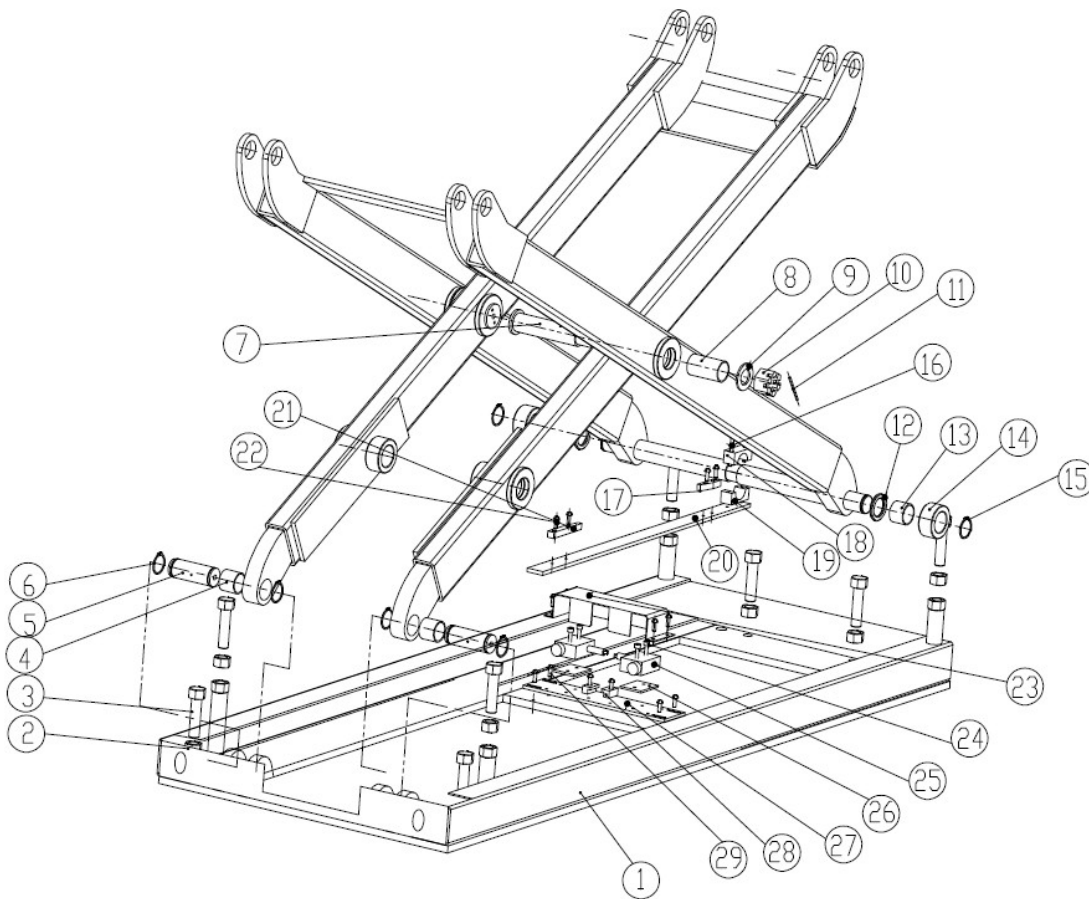
PNEUMATIC SYSTEM



1. AIR FILTER
2. ELECTROMAGNETIC REVERSING VALVE
3. MAIN CYLINDER
4. ASSISTANT CYLINDER

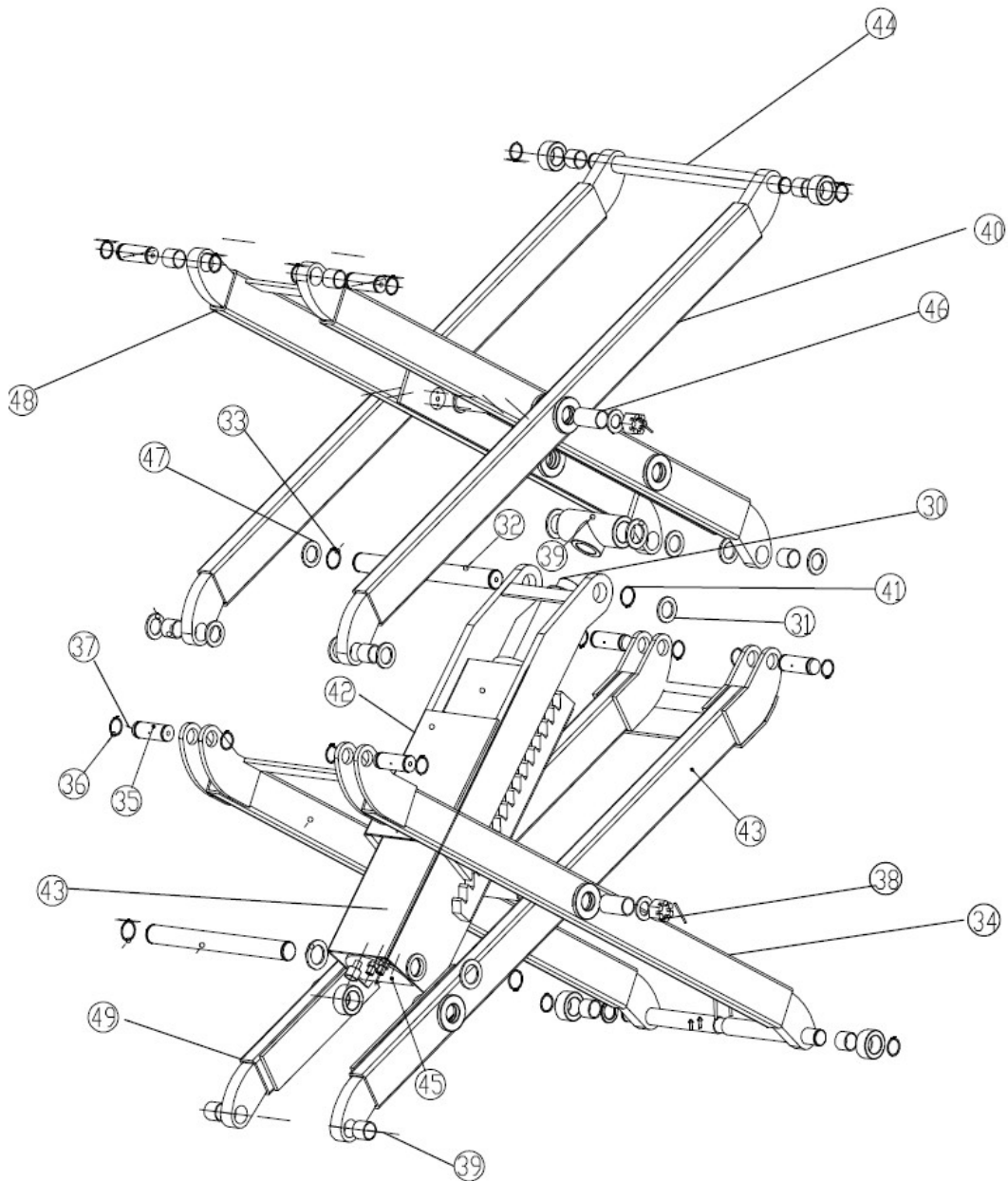
WIRING DIAGRAM



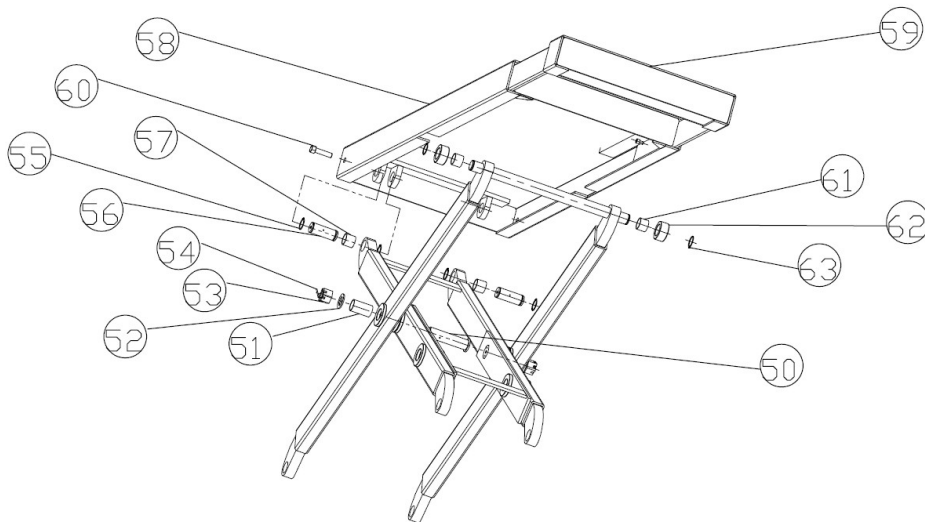


S/N	Material#	Name	Spec.	Qty	Property	Note
1		Base assembly	FL-8802-A1-B1	1	Welded	
2		Hex nut	M16	8	Standard	
3		Bolt	M16X50	4	Standard	
4		Bearing	3025	2	Standard	
5		Shaft A	FL-8802-A2	2	45#	
6		Circlip	Φ30	4	Standard	
7		Shaft B	FL-8802-A5-B5	2	45#	
8		Bearing	3055	2	Standard	
9		Flat washer	Φ24	2	Q235A	
10		Slotted nut	M24	2	Standard	
11		Cotter pin	Φ2.5	2	Standard	
12		Washer	FL-8802-A5-B2-C5	2	Q235A	
13		Bearing	3025	2	Standard	
14		Roller	FL-8802-A5-B2-C4	2	Nylon	
15		Circlip	Φ30	2	Standard	
16		Inside hex cylinder screw	M4X45	2	Standard	
17		Retaining block B for limit switch	FL-8802-A1-B7	1	Q235A	
18		Up fixing block	FL-8802-A1-B8	1	Q235A	
19		Down fixing block	FL-8802-A1-B9	1	Q235A	
20		Draw bar	FL-8802-A1-B6	1	Q235A	
21		Retaining block A for limit switch	FL-8802-A1-B3	1	Q235A	
22		Cross cap screw	M4X14	2	Standard	

S/N	Material#	Name	Spec.	Qty	Property	Note
23		Protection cover	FL-8802-A1-B2	1	Q235A	
24		Inside hex cylinder screw	M4X45	4	Standard	
25		Limit switch	TZ8108	2	Standard	
26		Plate for limit switch	FL-8802-A1-B5	2	Q235A	
27		Installation plate for limit switch	FL-8802-A1-B10	1	Q235A	
28		Limit block	FL-8802-A1-B4	2	Q235A	
29		Cross cap screw	M4X14	4	Standard	

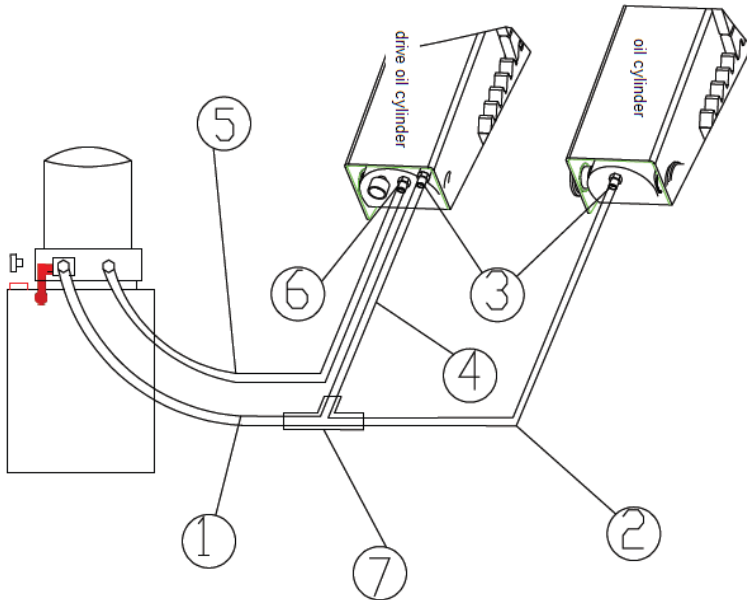


S/N	Material#	Name	Spec.	Qty	Property	Note
30		Oil cylinder	FL-8802-A4-B1	1		
31		Spacer	FL-8802-A3-B4	2	Q235	
32		Oil cylinder shaft	FL-8802-A3-B1	1	45	
33		Circlip	Φ35	2	GB/T894.1	
34		Movable bracket A	FL-8802-A5-B2	1		
35		Shaft A	FL-8802-A2	4	45	
36		Circlip	Φ30	8	GB/T894.1	
37		Grease cup	M8	4	GB/T1155	
38		Washer	6603GN-A10	6		
39		Bearing	3028	4	SF-1	
40		Movable bracket A	FL-8802-A5-B3	1		
41		Circlip	Φ35	2	GB/T894.1	
42		Air cylinder plate	FL-8802-A3-B5	1		
43		Cylinder sheath	FL-8802-A3-B3	1		
44		Oil cylinder shaft	FL-8802-A3-B1			
45		Oil cylinder connector	FL-8802-A3-B6	1		
46		Bearing	3550	2	SF-1	
47		Spacer	FL-8802-A3-B4	2		
48		Movable bracket D	FL-8802-A5-B4	1		
49		Movable bracket A	FL-8802-A5-B1	1		



S/N	Material#	Name	Spec.	Qty	Property	Note
50		Shaft B	FL-8802-A5-B5	2	45	
51		Bearing	3055	2	SF-1	
52		Flat washer	Φ24	2	GB/T95	
53		Hex slotted nut	M24	2	GB/T6178	
54		Cotter pin	Φ2.5	2	GB/T91	
55		Circlip	Φ30	4	GB/T894.1	
56		Shaft	FL-8802-A2	2	45	

57		Bearing	3028	2	SF-1	
58		Runway	FL-8802-A6-B2	1		
59		Runway extension	FL-8802-A6-B3	1		
60		Inside hex cylinder screw	M8X12	2	GB/T70	
61		Bearing	3025	2	SF-1	
62		Roller	FL-8802-A5-B2-C4	2	Nylon	
63		Circlip	Φ30	2	GB/T894.1	



S/N	Material#	Name	Spec.	Qty	Property	Note
1		Oil hose	FL-8802-A3-B8	1	Assembly	3,8M in length, with a straight connector at one end and the a being connector at the other
2		Oil hose	FL-8802-A3-B8	1	Assembly	1.9M in length, with two straight connector at both ends
3		Connector B	FL-8802-A4-B16	2		
4		Oil hose	FL-8802-A3-B8	1	Assembly	0.35M in length, with two straight connector at both ends
5		Oil hose	FL-8802-A3-B8	1	Assembly	4,2M in length, with a straight connector at one end and the a being connector at the other
6		Throttle valve	FL-8802-A4-B15	1		
7		Three-way connector	FL-8802-A9-B7	1	45#	

Annex 9, Spare parts list

Spare parts for the mechanical part

S/N	Material#	Name	Spec.	Qty	Property	Note
1		Retaining block B for limit switch	FL-8802-A1-B7	1	Q235	

2		Up fixing block	FL-8802-A1-B8	1	Q235	
3		Down fixing block	FL-8802-A1-B9	1	Q235	
4		Drawbar	FL-8802-A1-B6	1	Q235	
5		Retaining block A for limit switch	FL-8802-A1-B3	1	Q235	
6		Protection cover	FL-8802-A1-B2	1	Q235	
7		Installation plate for limit switch	FL-8802-A1-B10	1	Q235A	
8		Limit block	FL-8802-A1-B4	2	Q235A	
9		Spacer	FL-8802-A3-B4	2	Q235	
10		oil	Φ8	4	Standard	
11		Spacer	FL-8802-A3-B4	2	Q235A	
12		Seal ring	KGD120*95*22.4*6.35	1		
13		Y-shape seal ring	67*77*6	1		
14		O-shape seal ring	109*5.3	1		
15		O-shape seal ring	118*3.55	1		
16		O-shape seal ring	53*3.55	1		
17		Seal ring	KGD100*75*22.4*6.35	1		
18		O-shape seal ring	38.7*3.55	1		
19		O-shape seal ring	92.5*3.55	1		

Spare parts for the electrical system

S/N	Material #	Name	Spec.	Qty	Unit	Pic
1		Power switch	LW26GS-20/04	Pcs	1	
2		Button	Y090	Pcs	3	
3		Power indicator	AD17-22G-AC24	Pcs	1	
4		Transformer	JBK-63VA220V-24V	Pcs	1	Same as item 7
5		Transformer	JBK-63VA230V-24V	Pcs	1	Same as item 7
6		Transformer	JBK-63VA240V-24V	Pcs	1	Same as item 7
7		Transformer	JBK-63VA380V-24V	Pcs	1	
8		Transformer	JBK-63VA400V-24V	Pcs	1	Same as item 7
9		Transformer	JBK-63VA415V-24V	Pcs	1	Same as item 7
10		AC contactor	CJX2-1210/AC24	Pcs	1	
11		Circuit breaker	DZ47-63 C16 /3P	Pcs	1	

S/N	Material #	Name	Spec.	Qty	Unit	Pic
12		Circuit breaker	DZ47-63 C32 /2P	Pcs	1	
13		Circuit breaker	DZ47-63 C3 /1P	Pcs	1	
14		Pneumatic solenoid valve	3V210-08/DC24	Pcs	1	
15		Limit switch	D4MC5020	Pcs	2	
16		Option switch	Y90-11x	Pcs	1	
17		Bridge rectifier	KBPC5A-35A	Pcs	1	
18		Capacitor	4700UF/50V	Pcs	1	
19		Control box	460*260*135	Pcs	1	
20		Relay	MY4NJ/DC24	Pcs	1	
21		Relay holder	PYF14AE	Pcs	1	

We've tried to do our very best to provide complete and detailed information so that your installation and operation experience is free of problems. But, please feel free to contact us, if you should run into any problems in installation and operation your new lift, or have questions on some of the parts.

SAFETY OPERATING PROCEDURES

Vehicle Hoist

DO NOT use this machine unless the operator has been thoroughly instructed in its safe use and operation.



Safety glasses must be worn at all times in work areas.



Long and loose hair must be contained.



Sturdy footwear must be worn at all times in work areas.



Close fitting/protective clothing must be worn.



Rings and jewellery must not be worn.



Do not stand on hoist whilst hoist is in operation.

A vehicle hoist must not be operated unless it has a current certificate of inspection.

PRE-OPERATIONAL SAFETY CHECKS

1. Ensure that vehicle hoist has operating and maintenance instructions permanently located and clearly visible.
2. The equipment must be used in accordance with manufacturer's instructions.
3. Check the capacity of the hoist compared to the weight of the vehicle. If vehicle is too heavy, do not proceed.
4. Ensure the area is clean and clear of grease, oil, and objects that may be a slip/trip hazard.
5. Familiarise yourself with and check all machine operations and controls.
6. Check all safety devices are in good condition.
7. Ensure support arms are capable of being locked in position.
8. Ensure rubber pads are in good condition on all load points.
9. Faulty equipment must not be used. Immediately report suspect equipment.

OPERATIONAL SAFETY CHECKS

1. Centre vehicle on hoist, ensuring that the weight is evenly distributed to the front and rear.
2. Identify the correct jacking points.
3. Only one person shall operate the hoist at a time.
4. Ensure hoist area is clear of people and equipment before operating.
5. Never leave the hoist running unattended.
6. Check vehicle stability by looking at the jacking points.
7. Engage and check for the correct engagement of the locks.
8. At the completion of work lower the vehicle hoist and ensure all equipment is left in a safe position.

HOUSEKEEPING

1. Switch off equipment.
2. Leave the equipment and work area in a safe, clean and tidy state.

POTENTIAL HAZARDS

■ Falling objects ■ Trapping hazards ■ Crushing hazards ■ Entanglement hazards

This Safety Operating Procedure does not necessarily cover all possible hazards associated with the machine and should be used in conjunction with other references. It is designed to be used as an adjunct to the operation in the safety procedures and to act as a reminder to the operator prior to machine use.

3000kg

Scissor **Hoist**

OPERATING INSTRUCTIONS

The hoist should only be operated by personnel that have been thoroughly trained in operation and maintenance of the hoist.

1. Drive the vehicle evenly over the scissor platform and apply the park brake.
2. Install the four rubber lifting blocks to the underside of the jacking points of the hoist.
3. Make sure that all personnel are clear and there are no obstructions around the hoist.

TO RAISE THE **HOIST**

1. Press the “UP” button on the control panel to approximately 500mm above the floor.
2. Check that the vehicle is evenly balanced on the hoist.
3. Continue raising the hoist to the desired working height checking for any obstructions.
4. Once the hoist has reached the desired working height press the lock button until the vehicle has rested on the locks
Important: a visual check is to be made for correct engagement of the locks prior to going under the hoist.

TO LOWER THE **HOIST**

1. Check for any obstructions under the hoist prior to lowering the hoist.
2. Press the “DOWN” button on the control panel until the locks are clear
Please note: the hoist will raise approximately 100mm and then will descend automatically.
3. Once the hoist has reached its lowest position, remove the rubber supporting blocks.
4. Turn the power switch to the off position on the control panel.

MODEL: AL-3000BG	SERIAL NO.:	APPROVALS: WAH2163
----------------------------	--------------------	------------------------------



ADVANCE AUTOQUIP WARRANTY

GENERAL WARRANTY INFORMATION:

ADVANCE AUTOQUIP'S OBLIGATION UNDER THIS WARRANTY IS LIMITED TO REPAIRING OR REPLACING ANY PART OR PARTS RETURNED TO THIS FACTORY, TRANSPORTATION CHARGES PREPAID, WHICH PROVE UPON INSPECTION TO BE DEFECTIVE AND WHICH HAVE NOT BEEN MISUSED. DAMAGE OR FAILURE TO ANY PART DUE TO FREIGHT DAMAGE OR LACK OF MAINTENANCE IS NOT COVERED UNDER THIS WARRANTY. ADVANCE AUTOQUIP RESERVES THE RIGHT TO DECLINE RESPONSIBILITY WHEN REPAIRS HAVE BEEN MADE OR ATTEMPTED BY OTHERS, OR WHERE NON GENUINE PARTS HAVE BEEN USED. THIS WARRANTY DOES NOT COVER DOWNTIME EXPENSES INCURRED WHEN UNIT IS IN REPAIR. ADVANCE AUTOQUIP ARE NOT LIABLE FOR POSSIBLE ISSUES, DAMAGES, ACCIDENTS ETC RESULTING FROM FAILURE TO FOLLOW THE OPERATION OR INSTALLATION INSTRUCTIONS CONTAINED IN THE MANUAL OR ON THE EQUIPMENT. THE MODEL NAME AND SERIAL NUMBER OF THE EQUIPMENT MUST BE PROVIDED WITH ALL WARRANTY CLAIMS. THIS WARRANTY STATEMENT CONTAINS THE ENTIRE AGREEMENT BETWEEN ADVANCE AUTOQUIP AND THE PURCHASER UNLESS OTHERWISE SPECIFICALLY EXPRESSED IN WRITING. THIS NON-TRANSFERABLE WARRANTY APPLIES TO THE ORIGINAL PURCHASER ONLY. THIS WARRANTY IS APPLICABLE TO UNITS LOCATED ONLY IN AUSTRALIA. CONTACT ADVANCE AUTOQUIP FOR SPECIFIC WARRANTY PROVISIONS FOR UNITS LOCATED OUTSIDE OF THESE COUNTRIES.

NOTE: THE EQUIPMENT IS NOT TO BE USED FOR WASH DOWN PURPOSES OR TO BE INSTALLED IN AN OUTDOOR ENVIRONMENT WHERE IT IS SUBJECT TO WEATHER OR WATER DAMAGE. WARRANTY WILL BE IMMEDIATELY VOID.

STRUCTURAL COMPONENTS:

ALL STRUCTURAL AND MECHANICAL COMPONENTS OF THIS UNIT ARE GUARANTEED FOR A PERIOD OF FIVE YEARS, FROM THE DATE OF INVOICE, AGAINST DEFECTS IN WORKMANSHIP AND/OR MATERIALS WHEN LIFT IS INSTALLED AND USED ACCORDING TO RECOMMENDATIONS.

POWER UNIT:

POWER UNIT COMPONENTS (PUMP AND RESERVOIR) ARE GUARANTEED A PERIOD OF ONE YEAR, FROM THE DATE OF INVOICE, AGAINST DEFECTS IN WORKMANSHIP AND/OR MATERIALS WHEN THE LIFT IS INSTALLED AND USED ACCORDING TO RECOMMENDATIONS.

ELECTRICAL COMPONENTS:

ALL ELECTRICAL COMPONENTS (INCLUDING MOTOR) ARE GUARANTEED A PERIOD OF ONE YEAR FOR PARTS ONLY (EXCLUDING LABOR), FROM THE DATE OF INVOICE, AGAINST DEFECTS IN WORKMANSHIP AND/OR MATERIALS WHEN THE LIFT IS INSTALLED AND USED ACCORDING TO RECOMMENDATIONS.

PNEUMATIC (AIR) COMPONENTS:

ALL PNEUMATIC (AIR) COMPONENTS (I.E. AIR CYLINDERS AND POPPET AIR VALVES) ARE GUARANTEED FOR ONE YEAR FOR PARTS ONLY (EXCLUDING LABOR), FROM THE DATE OF INVOICE, AGAINST DEFECTS IN WORKMANSHIP AND/OR MATERIALS WHEN THE LIFT IS INSTALLED AND USED ACCORDING TO RECOMMENDATIONS.

EXCLUSIONS:

WARRANTY DOES NOT INCLUDE CONSUMABLE ITEMS SUCH AS HYDRAULIC OIL, LIFTING PADS, OIL SEALS, VEE BELTS AND SLIDING BLOCKS.


THIS WARRANTY SUPERSEDES ALL OTHER WARRANTY POLICIES PREVIOUSLY STATED AND IN ALL OTHER ADVANCE AUTOQUIP'S PRODUCT SPECIFIC LITERATURE.

Advance AutoQuip

2 McDonald Crescent | Bassendean WA 6054

Ph: 08 9279 1663 | Fax: 08 9279 1667 | E: sales@aaq.net.au | W: www.aaq.net.au

COMMISSIONING REPORT

1. Details of Customer	 2 McDonald Crescent Bassendean WA 6054 P: 08 9279 1663 E: sales@aaq.net.au			
Customer Name:				
Installation Address:				
2. Hoist Details				
Model No:				
Hoist Type:				
Installation Date:				
3. Commissioning Report	Yes	No	N/A	Comments
Safety Devices				
Safety devices incorporated into the design of the vehicle to AS/NZS 1418.9				
Welds				
Visual check all welds completed and comply to requirement of AS/NZS 1554				
Hydraulic Equipment and Controls				
Visual check carried out for leaks				
Pneumatic Equipment and Controls				
Visual check carried out for leaks				
Safety Locks				
Safety locks tested for correct operation				
Support Pads				
Checked for good working order				
Wheel Stops				
Supplied with the hoist and in good working order				
Hoist Motion Limits				
Checked for correct operation				
Load Test and Speed Check				
Hoist checked with load for correct operation and speed control tested				
Wire Ropes				
Checked wire ropes for correct installation and tension				
Concrete Floor				
Concrete floor is a suitable depth for installation				

COMMISSIONING REPORT

Location of Vehicle Hoist & Vehicle Clearances			
Vehicle hoist or any part of the load is positioned no less than 600mm away from any fixed structure			
Provisions have been made for effective clearances above the vehicle when the hoist is in its fully raised position.			
Markings - Hoist Checked for Relevant Marking Including:			
Make & Model Number			
Serial number			
Rated Capacity			
Reference to maintenance			
Operation instructions			
Screw and Nut Gaps			
Hoist compliance plate showing design registration			
Functional Test			
Vehicle hoist has been tested and all safety devices, limit switches and control function interlocks have been tested for correct operation.			
Demonstration			
The installer has demonstrated the operation of the vehicle hoist to the owner or operator			
Electrical Equipment and Controls			
Lock off isolating switch installed			
Emergency stop button installed			
3. Details of Electrical Contractor			
Trading Name:	EC Licence Number:		
Address:	Telephone Number:		
4. Signature			
	Name:		
	Date:		
I, being the person responsible for completing the commissioning report have exercised reasonable skill and competency when completing the report and hereby certify that the vehicle hoist has been commissioned fit for use as per the Australian / New Zealand Standard 1418.9:1996 Vehicle Hoists.			