

4 POST HOIST

AutoLift 4000S2



Heavy Duty 4 Post Vehicle Hoist
4000Kg Maximum Lifting Capacity
Design Registration Approval Number: WAH21048
Design Code: AS1418.9-19966

INSTALLATION MANUAL & OPERATION INSTRUCTIONS



READ FIRST



DO NOT use the machine until you read and understand all the dangers, warnings and cautions in this manual.



- READ THE ENTIRE CONTENTS OF THIS MANUAL BEFORE INSTALLATION AND OPERATION. BY PROCEEDING YOU AGREE THAT YOU FULLY UNDERSTAND AND COMPREHEND THE FULL CONTENTS OF THIS MANUAL. FORWARD THIS MANUAL TO ALL OPERATORS. FAILURE TO OPERATE THIS EQUIPMENT AS DIRECTED MAY CAUSE INJURY OR DEATH.

Specifications subject to change without notice.

Note: While all due care and attention has been taken in the preparation of this document, Advance AutoQuip shall not be liable for any inaccuracies or omissions which may occur therein

Advance AutoQuip

2 McDonald Crescent | Bassendean WA 6054

Ph: 08 9279 1663 | Fax: 08 9279 1667 | E: sales@aaq.net.au | W: www.aaq.net.au



IMPORTANT INFORMATION

THIS MANUAL MUST BE READ & UNDERSTOOD ENTIRELY BEFORE THE INSTALLATION & OPERATION OF THE HOIST.

ASSEMBLY & INSTALLATION MUST ONLY BE PERFORMED BY COMPETENT PERSONNEL.

OPERATION OF THE HOIST MUST ONLY BE PERFORMED BY TRAINED PERSONNEL.

THIS HOIST MUST ONLY BE USED FOR THE PURPOSE OF LIFTING MOTOR VEHICLES WITH A WEIGHT OF NO MORE THAN 4000KG.

THIS MANUAL MUST BE KEPT IN A SAFE PLACE FOR FUTURE REFERENCE.

SERVICING & MAINTENANCE OF THE HOIST IS THE OWNERS RESPONSIBILITY.



It is important that the following information is fully understood by the operator. Failure to read & follow these instructions may result in serious injury to personnel.

1. DO NOT operate the hoist if damaged. In the event of the hoist being damaged consult a competent service technician to determine the hoists safe operation.
2. DO NOT use the hoist to lift only one side of a vehicle. Ensure the vehicle is correctly positioned on the hoist platforms before operation.
3. DO NOT modify any component of the hoist.
4. All personnel must remain clear of the hoist during the raising & lowering of the vehicle.
5. All personnel must keep their feet clear of the hoist during lowering.
6. No objects are to be placed under the vehicle during the raising & lowering of the vehicle.
7. Do not excessively rock a vehicle whilst it is on the hoist.
8. Personnel must not ride the hoist at any time.



The following warnings on the hoist are provided as a guide for the safe operation of the hoist.
PLEASE OBSERVE THEM!



The hoist must be used by trained & authorised personnel only.



Only authorised personnel may be present around the hoist.



Ensure the vehicle is loaded centrally on the hoist before operation.



The vehicle handbrake must be engaged before operating the hoist.



Ensure that the safety is engaged before working under hoist.



Stop raising the hoist if the platforms become unbalanced.



If a vehicle becomes unstable on the hoist, vacate the area immediately.



Do not use the hoist for any purpose other than lifting a vehicle.



Do not use water or other liquids on or near the hoist.



The switch box must only be opened by a qualified electrician.

General information

This chapter contains warning instructions to operate the hoist properly and prevent injury to operators or objects.

This manual has been written to be used by shop technicians in charge of the hoist (operator) and routine maintenance technician (maintenance operator).

The operating instructions are considered to be an integral part of the machine and must remain with it for its whole useful life.

Read every section of this manual carefully before operating the hoist and unpacking it since it gives helpful information about:

- **SAFETY OF PEOPLE**
- **SAFETY OF THE HOIST**
- **SAFETY OF LIFTED VEHICLES**

AAQ Australia is not liable for possible problems, damages, accidents, etc. resulting from failure to follow the instructions contained in this manual.

Only skilled technicians of **AUTHORISED DEALERS** or **SERVICE CENTERS AUTHORISED** by the manufacturer shall be allowed to carry out lifting, transport, assembling, installation, adjustment, calibration, settings, extraordinary maintenance, repairs, overhauling and dismantling of the hoist. **THE MANUFACTURER IS NOT RESPONSIBLE FOR POSSIBLE DAMAGE TO PEOPLE, VEHICLES OR OBJECTS IF SAID OPERATIONS ARE CARRIED OUT BY UNAUTHORIZED PERSONNEL OR THE HOIST IS IMPROPERLY USED.**

Any use of the machine by operators who are not familiar with the instructions and procedures contained herein shall be forbidden.


Manual keeping

For a proper use of this manual, the following is recommended:

- Keep the manual near the hoist, in an easily accessible place.
- Keep the manual in an area protected from the damp.
- Use this manual properly without damaging it.
- Any use of the machine made by operators who are not familiar with the instructions and procedures contained herein shall be forbidden.


This manual is an integral part of the hoist: it shall be given to the new owner if and when the hoist is resold.

Obligation case of malfunction


	In case of machine malfunction, follow the instructions contained in the following chapter.
---	---


Cautions for the safety of the operator


Operators must not be under the influence of sedatives, drugs or alcohol when operating the machine.

	Before operating the hoist, operators must be familiar with the position and function of all controls, as well as with the machine features shown in the chapter “Operation and use”
---	--

Warnings

	Unauthorized changes and/or modifications to the machines relieve the manufacturer of any liability for possible damages to objects or people. Do not remove or make inoperative the safety devices, this would cause a violation of safety at work laws and regulations.
---	---

	Any other use which differs from that provided by the manufacturer of the machine is strictly forbidden.
---	--

	The use of non genuine parts may cause damage to people or objects.
--	---

DECLARATION OF WARRANTY AND LIMITATION OF LIABILITY

The manufacturer has paid proper attention to the preparation of this manual. However, nothing contained herein modifies or alters, in any way, the terms and conditions of manufacturer agreement by which this hoist was acquired, nor increase, in any way, manufacturer’s liability to the customer.

TO THE READER

Every effort has been made to ensure that the information contained in this manual is correct, complete and up-to date. The manufacturer is not liable for any mistakes made when writing this manual and reserves the right to make any changes due to the development of the products, at any time without prior notice.

Product identification

The identification data of the machine are shown in the label placed on the control unit.

Four Post Vehicle Hoist		CE	
Model No.	AL-4000A /AL-4000S2	Power Supply	240V/50HZ/1PH, 415V/50HZ/3PH
Lift Height(mm)	1850/1800	Power(Kw)	2.2
Capacity(Kg)	4000	Air Pressure(Mpa)	0.6-0.8
NW(Kg)	1470/1106	GW(Kg)	1520/1126
JACK Lifting Height(mm)	450	Jack Lifting Capacity(Kg)	2000



Use the above data to order spare parts or when contacting the supplier. The removal of this label is strictly forbidden.

Machines may be updated or slightly modified from an aesthetic point of view and, as a consequence, they may present different features from these shows, without prejudicing what has been described herein.

Warranty certificate

The warranty is valid for a period of 12 months starting from the date of the purchase invoice.

The warranty will come immediately to an end when unauthorized modifications are made to the machine or parts of it are carried out.

The presence of defects in workmanship must be verified by the Manufacturer's personnel in charge.

Technical servicing

For all servicing and maintenance operations not specified or shown in these instructions, contact your Dealer where the machine has been purchased.



ATTENTION: moving and positioning operations can be very dangerous if not performed with the utmost caution. Send bystanders away; clear the installation site; check the integrity and suitability of the tools and equipment; do not touch the suspended loads and stay at a safe distance from them; move the suspended loads at not more than 20cm height from ground; carefully follow the instructions given below; in case of doubt do not persist.

For transport and volume reasons, the hoist is supplied partially disassembled. The different parts are joint together to allow a safe transport and handling. Transport of the hoist must be performed by suitable means. Avoid any damage during handling.

Lifting and handling

When loading/unloading or transporting the equipment to the site, be sure to use suitable loading (e.g. cranes, trucks) and hoisting means. Be sure also to hoist and transport the components securely so that they cannot drop, taking into consideration the package's size, weight and centre of gravity and it's fragile parts.



Hoist and handle only one package at a time

Storage and stacking of packages

Packages must be stored in a covered place, out of direct sunlight and in low humidity, at a temperature between -10°C and +40°C.

Stacking is not recommended: the package's narrow base, as well as its considerable weight and size make it difficult and hazardous.

Delivery and check of packages

When the hoist is delivered, check for possible damages due to transport and storage, verify that what is specified in the manufacturer's confirmation of order or consignment number. In case of damage in transit, the customer must immediately inform the carrier of the problem.

Packages must be opened paying attention not to cause damage to people (Keep a safe distance when opening straps) and parts of the hoist (be careful the objects do not drop from the package when opening).

Product description

The hoist is composed by four vertical posts and two platforms, which must be safely anchored to the ground. The platforms are equipped with slide block with electro-hydraulic control system. The hoist is operated by an electric motor controlling a hydraulic pump, which delivers the hydraulic fluid to the cylinders at the bottom of the posts for lifting platforms with the sole purpose of performing motor vehicle service, repairing and inspection.

*Forbidden to use for washing and spraying vehicles
Forbidden to lift vehicle which weight is over 4000kg*

Any other use not described is to be considered as improper and irrational, and thus it will be under the whole responsibility of the operator.

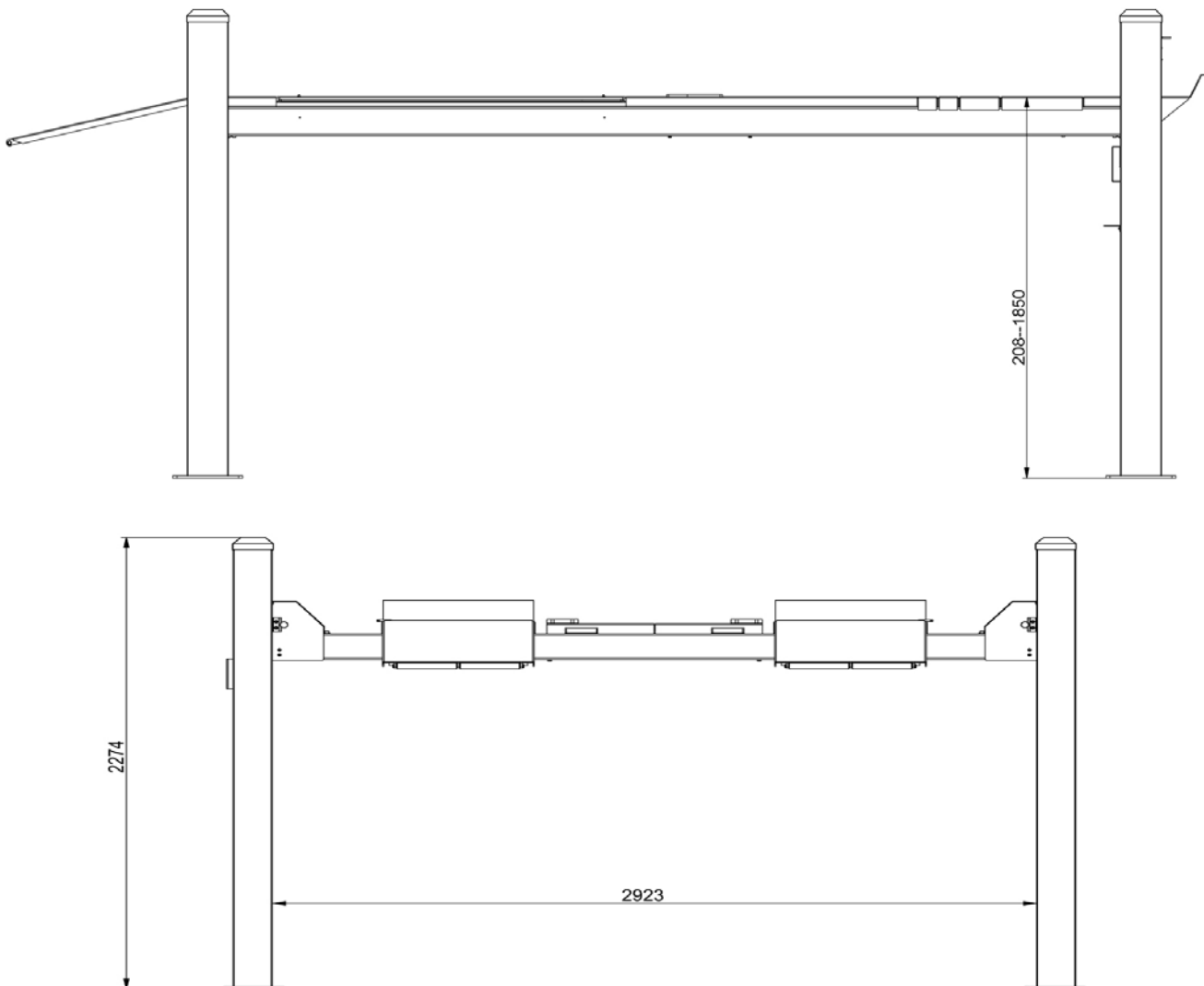
Follow the instructions given by this guide carefully to grant the machine a correct function, efficiency and a long working life. Keep this guide as well as all the supplied technical literature in a safe place close to the hoist in order to help the users to consult it whenever necessary. The technical literature is an integral part of the hoist and it must always follow the product, even in case of sale.

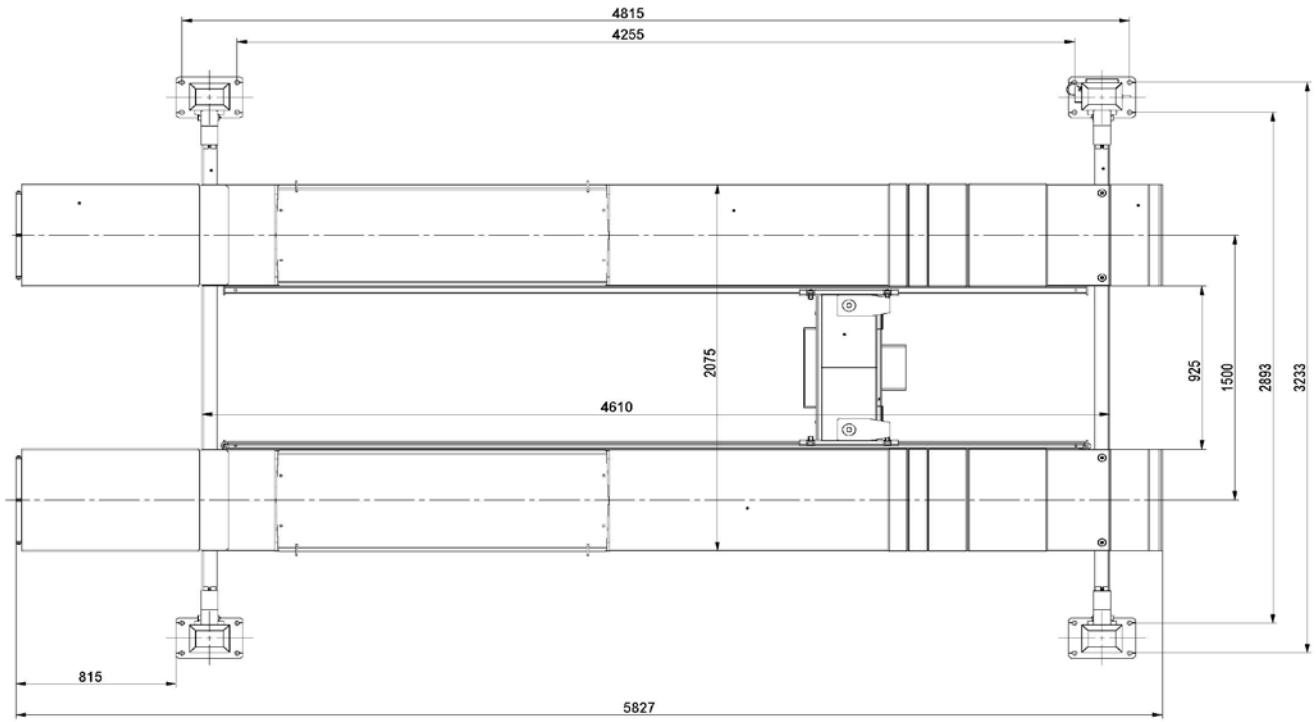
Follow the directions given by this guide with the utmost attention: the Constructor declines all responsibility for any damage due to negligence and non-observance of the herewith-contained instructions.

==The non-observance of herewith-contained instructions will automatically involve the immediate lapse of warranty.

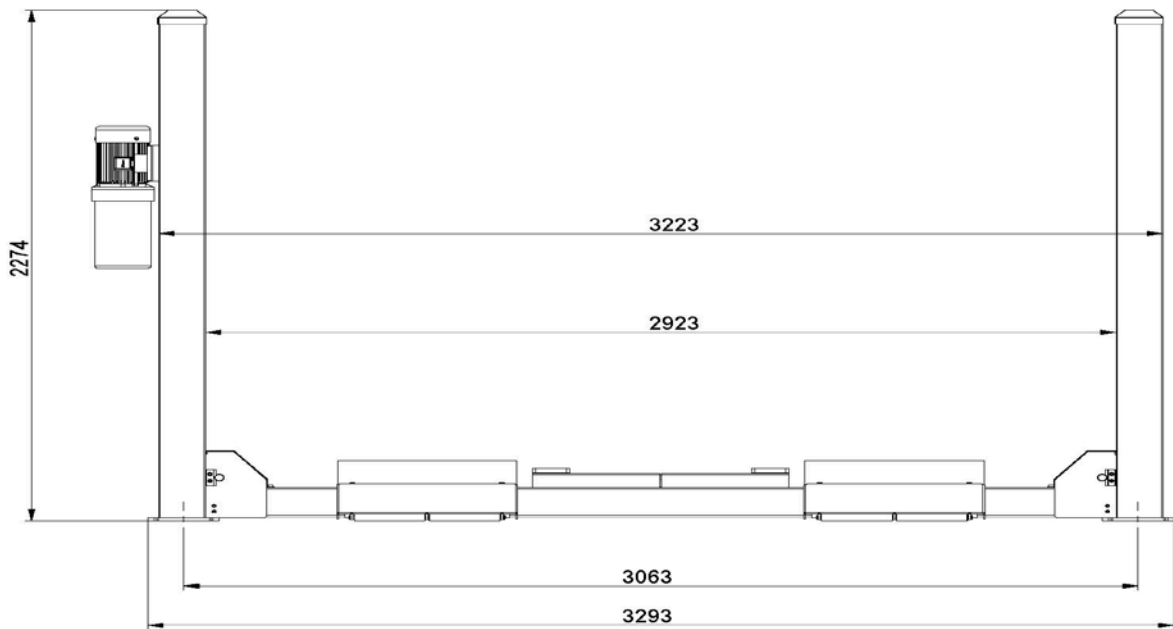
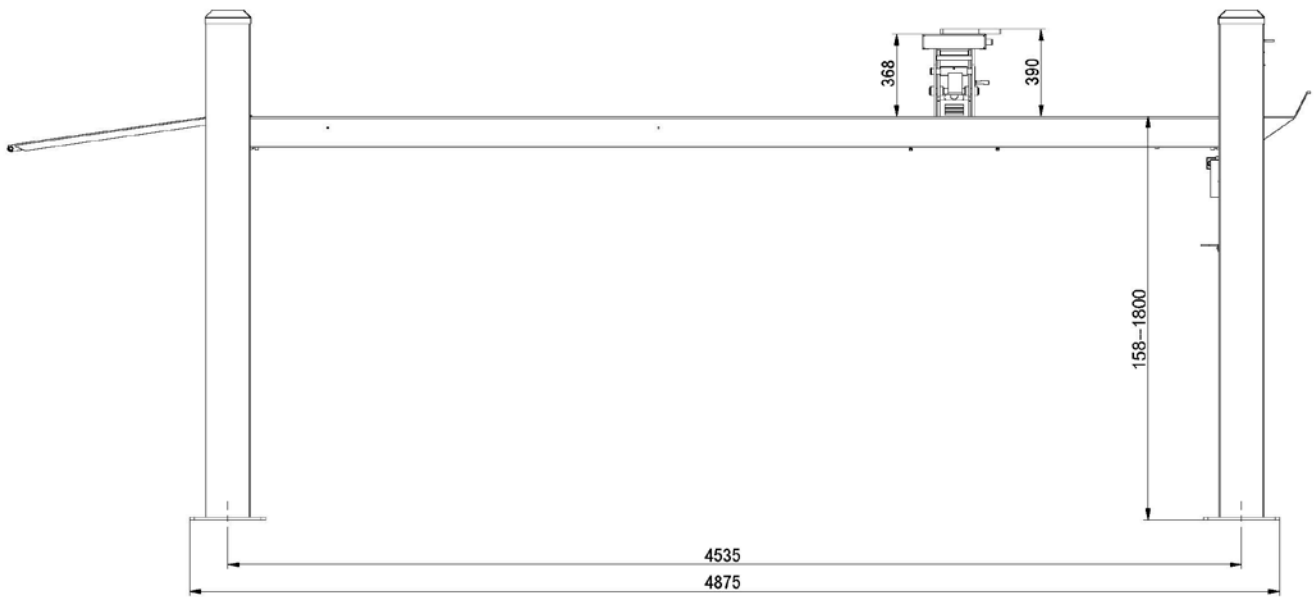
Dimensional diagrams

Dimensions / AL-4000A







Dimensions / AL-4000S2



Installation

	<p>Only skilled technicians, appointed by the manufacturer, or by authorized dealers, must be allowed to carry out installation. Serious damage to people and to the hoist can be caused if installations are made by unskilled personnel.</p>
---	--

	<p>Before carrying out any operations, remember to insert the safety piece of wood between the lower booms and the base frame.</p>
---	--

Checking for room suitability


The hoist has been designed to be used in covered and sheltered places free of overhead obstructions. The place of installation must not be next to washing areas, painting workbenches, solvent or varnish deposits. The installation near to rooms, where a dangerous situation of explosion can occur, is strictly forbidden. The relevant standards of the local Health and Safety at Work regulations, for instance, with respect to minimum distance to wall or other equipment, escapes and the like, must be observed.

Lighting

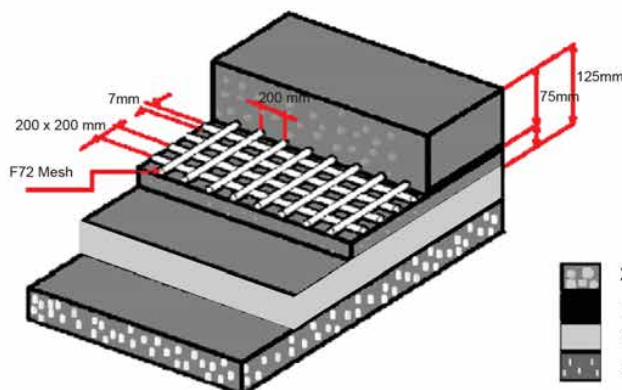
Lighting must be carried out according to the effective regulations of the place of installation. All area next to the hoist must be well and uniformly light.

Installation surface





The hoist must be placed on level floor and sufficiently resistant. The surface must be suitable for bearing maximum stress values, also in unfavorable working conditions. For installations on raised surface, compliance with the maximum carrying capacity of the surface is recommended.

	<p>A level floor is suggested for proper installation. Small differences in floor slope may be compensated for by proper shimming. Any major slope change will affect the level lifting performance. If a floor is of questionable slope (more than 3mm side to side or 5mm within the fill length of hoist), considering to pour the new concrete slab.</p>
---	--

Installation



FOUNDATION DIMENSIONS IN MM			QUALITY OF CONCRETE	MIN. PRESSURE RESISTANCE OF SURFACE	MAX. REACTION ON EACH BEARING POINT
Length	Width	Thickness	25MPA	425 Kg/cm ²	0.9 Kg/cm ²
5000	4000	125			

-  25MPA REINFORCED CONCRETE
-  F72 REINFORCED MESH
-  COMPACTED SOIL
-  GRAVEL SHEETING

INSTALLATION

Please ensure that the hoist is installed in compliance to relevant state requirements regarding positioning in the workshop.

Installation must be performed by Competent Personnel Only.

The Hoist must be installed in a suitable environment for the safe repair of motor vehicles.

Foundation

The hoist must be bolted to level concrete that is in good condition. Do not install the hoist on or near cracks and expansion joints in the concrete, doing this could effect the safe installation of the hoist.

The concrete must:

- Have a minimum thickness of 125mm
- Be Reinforced
- Be a grade of no less than 25MPA.

Tools Required

For the installation of the hoist you will require the following:

- Rotary hammer drill
- 16mm Masonry drill bit
- Chalk line
- Spirit Level
- General tool Kit

Unpacking

The hoist is supplied in a purpose built cradle. Once unpacked, the following will be included:

- 2 Platforms
- 2 Transverse Beams
- 1 Control Post
- 3 Non-Control Posts
- 4 Safety Ladders
- 2 Run-Ups
- 2 Wheel Stops
- Fitting Kit
- 2 Jacking Bridges (If Supplied)

INSTALLATION

Assembly

All Assembly, Connections & Installation must be performed by Competent Personnel Only.

Please note:

In reference to the following instructions, when mentioned, the Left & Right Hand Platforms and Front & Rear Transverse Beams are viewed from the drive on perspective.

Proceed with the following:

1. Establish the location of where the hoist will be installed. At this point ensure the work area is clean and that the concrete is ready for installation as outlined earlier in **C.1 Foundation**.
2. Place a chalk line across the floor where the front of the hoist will be positioned.
3. Position the Control Post with the front of the base parallel with the chalk line.
4. Vertically level the post in both planes. Ensure that the utmost care is taken with the Control Post until it is safely secured to the concrete.
5. Drill the 4 x 16mm holes of the control post into the concrete and fix the column with 4 x 16mm x 140mm Tru-Bolts. Ensure the bolts are now tightened.
6. Now that the Control Post is in position, a qualified electrician can now connect the electrical wiring to the control box.
7. The platforms and transverse beams need to be assembled into position. Due to the control post already being bolted into place, it is important that the hoist is built from that point.
8. Using 200mm high suitable blocks of timber, locate the transverse beams into position on the timber, noting that there is a front & rear beam. The difference being that the front beam has a safety striker attached for the limit switch, this end must be assembled to the control post position of the hoist.
9. Position the platforms taking note to feed the wire cables through the transverse beams before bolting the platforms to the beams. To do this, remove each pulley from the transverse beam, feed the cable through and replace the pulley. Ensure that the cables are fed through correctly and that they are positioned on the correct pulley. For the correct wire cable layout **Refer Section G.1 Wire Cable Diagram**. Please note, there is a Left & Right Platform. The Left Hand Platform has an outlet on the Front Left for the hydraulic hoses; this must be positioned closest to the control post.
10. Bolt the front transverse beam into position.

INSTALLATION

Assembly (Continued)

11. Before bolting the rear transverse beam into position fit the Jacking Bridges in the centre of the platforms. Please note that there is a Front & Rear Jacking Bridge, these are marked on the packaging. The control switches on the jacking bridges must be facing each other. Run the hydraulic hoses from the jacking bridges in the right hand platform and through the front transverse beam to the hydraulic hose outlet in the front of the Left Hand Platform.
12. With the jacking bridges fitted, bolt the rear transverse beam into position.
13. With the Platforms, Jacking Bridges & Transverse Beams now assembled, place the safety ladders in the transverse beams ensuring that the ladder is inserted between the end of the transverse beam and the cable guide roller assembly. It is important that the safety ladder is located centrally to the transverse beam. It is also important that the Chamfer on the safety ladder must be facing towards the middle of the hoist. (See Picture 1)
14. With the safety ladders in place, position each of the remaining non-control posts around the hoist. The posts should be in such a position so that the end of the transverse beam is inside the post. The nylon guides on the transverse beam should be placed against the face of the post. (See Picture 2)
15. Once the posts are in position, locate the bottom of the safety ladder into the hole at the bottom of the post ensuring the locating tab on the end of the safety ladder is not contacting with the concrete. Secure the safety ladder to the top of the post using the nuts supplied. (See Picture 3)
16. Feed the wire cables from the transverse beam to the top of each post, and secure the thread with the nuts supplied. One nut should be placed underneath the bracket in the top of the post and one should be placed on top of the bracket in the post. (See Picture 4) At this stage lock the nuts.
17. Connect the hydraulic hoses from the left platform to the control box on the control post. (See Picture 5) The three hoses must be connected, these include the 1 Main Hose from the hydraulic cylinder & the 2 Jacking Bridge Hoses.
18. Connect the wiring loom inside the control box for the actual hoist & the jacking bridges. There are 4 Solenoid Plugs on the wiring loom, each with colour coded wiring. The correct plug & solenoid combination can be identified by the colour coded wiring, and connect as follows:
 - Solenoid On Power Pack – Plug With Black & White Wiring
 - Hoist Solenoid On Manifold – Plug With Black & Grey Wiring
 - Jack 1 Solenoid On Manifold – Plug With Black & Red Wiring
 - Jack 2 Solenoid On Manifold – Plug With Blue & Black Wiring
19. On the Control Post, fit the travel limit switch to the safety ladder. (See Picture 6)
20. Fill the power pack reservoir with hydraulic oil. Hydraulic 32 grade oil should be used.

INSTALLATION

Assembly (Continued)

Prior to commencing the next stages it is important that the utmost care is taken with operating the hoist until all posts are safely secured to the concrete.

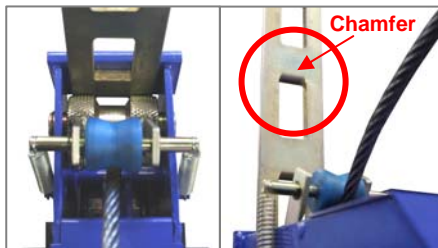
21. With the power connected to the hoist, press the up button to raise the hoist approximately 300mm. At this point, remove the blocks of timber from under the transverse beams. Now check that all hydraulic lines & wire cables are in their correct position and have not caught on each other or the hoist.
22. Raise the hoist to full height taking care not to over stroke the hydraulic cylinder under the left platform. Adjust the limit switch on the safety ladder inside the control post. It must make contact with the safety striker on the front transverse beam. (See Picture 7)
23. With the hoist at full height remove the D shackles on the cables at the end of the hydraulic cylinder under the left platform. Run the hoist up and down several times. By doing this it will allow the hoist to self level.
24. Once the hoist has self levelled, re-fit the D shackles on the cables and lock into place. At the same time ensure the twin lock nuts on the head of the hydraulic cylinder are locked into position.
25. Now lower the hoist so that it is only 100mm from the ground.
26. Check that all posts are in the correct position, ensuring that they are square to each other as well as horizontally level. Depending on the install situation, the posts may need to be shimmed. Before bolting it is also important to ensure that the posts are vertically level in both planes.
27. Once all posts are correctly positioned and level, they are ready to be bolted.
28. Drill the 4 x 16mm holes of the posts into the concrete and fix the column with 4 x 16mm x 140mm Tru-Bolts. Ensure the bolts are now tightened.
29. Once bolted down & tightened, check all levels.
30. Install the Wheel Stops at the front of each platform.
31. Install the Run-Up Ramps at the rear of each platform.
32. With the hoist on its locks and with no load on the wire cables, grease the 4 Transverse Beam Pulley Pins & the 4 Platform Pulley Pins. While pumping the grease into the pins, ensure you rotate the pulleys by hand. This ensures even distribution of grease.
33. The final step in the installation process is to adjust the wire cables. As the levels have already been checked, ideally all four locks should click simultaneously when the hoist is raised. To test, raise the hoist to full height, and then lower half way down, taking note of the clicks from the safety locks. If the clicks are out of sync adjust the relevant cables to overcome. Once the cables have been adjusted and the clicks are synchronised, lock both of the nuts on each of the cable ends.

INSTALLATION

Assembly (Continued)

34. Once the install and cable adjustment has been completed, check the synchronisation of the locks with a vehicle on the hoist. If necessary re-adjust the cables. *Please note: as the hoist cables have a settling in period, cable adjustment will be required after a certain amount of use.*
35. Place the post caps on top of all posts.

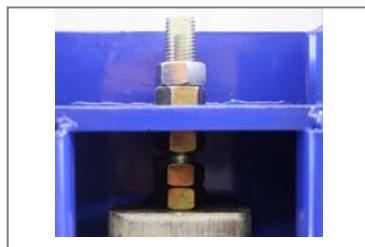
Assembly Pictures



Picture 1



Picture 2



Picture 3



Picture 4



Picture 5



Picture 6



Picture 7

INSTALLATION

Cam Lock Test Procedure

1. Raise the hoist 1 metre from the ground.
2. Starting at the front of the hoist, position a raised floor jack under the centre of the transverse beam.
3. With the raised floor jack in position, lower the hoist onto the floor jack until the wire cables have gone slack. This will allow the Cam Locks to operate.
4. With the wire cables now slack, quickly lower the floor jack so that the Cam Locks engage the safety ladders. The Cam Locks must prevent the hoist from lowering once the floor jack is lowered.
5. Repeat this above steps for the rear of the hoist also.

Electrical Connection

VOLTAGE	AMPS
240 Volt	10 AMP
415 Volt	20 AMP

*****PLEASE NOTE*****

All electrical work on the hoist including motor connection & mains supply connection must Only be performed by a qualified electrician

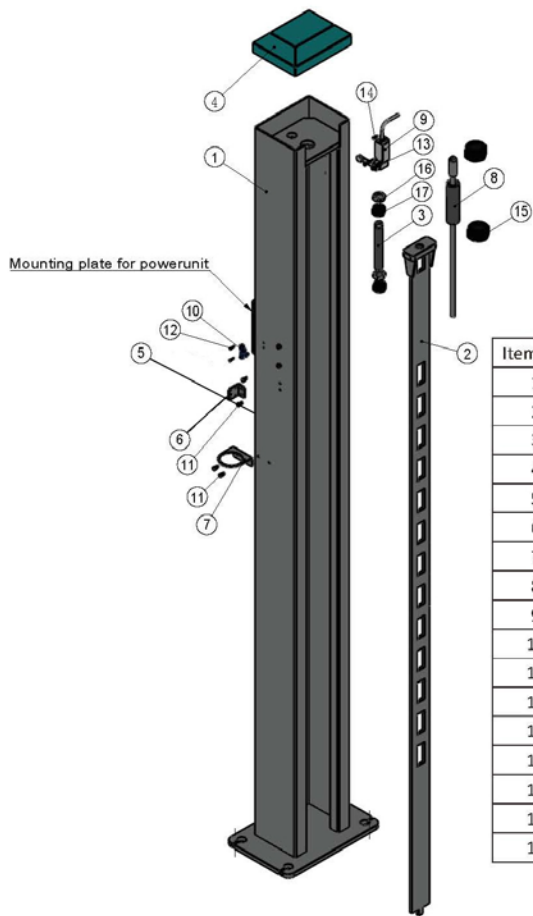
Important Information



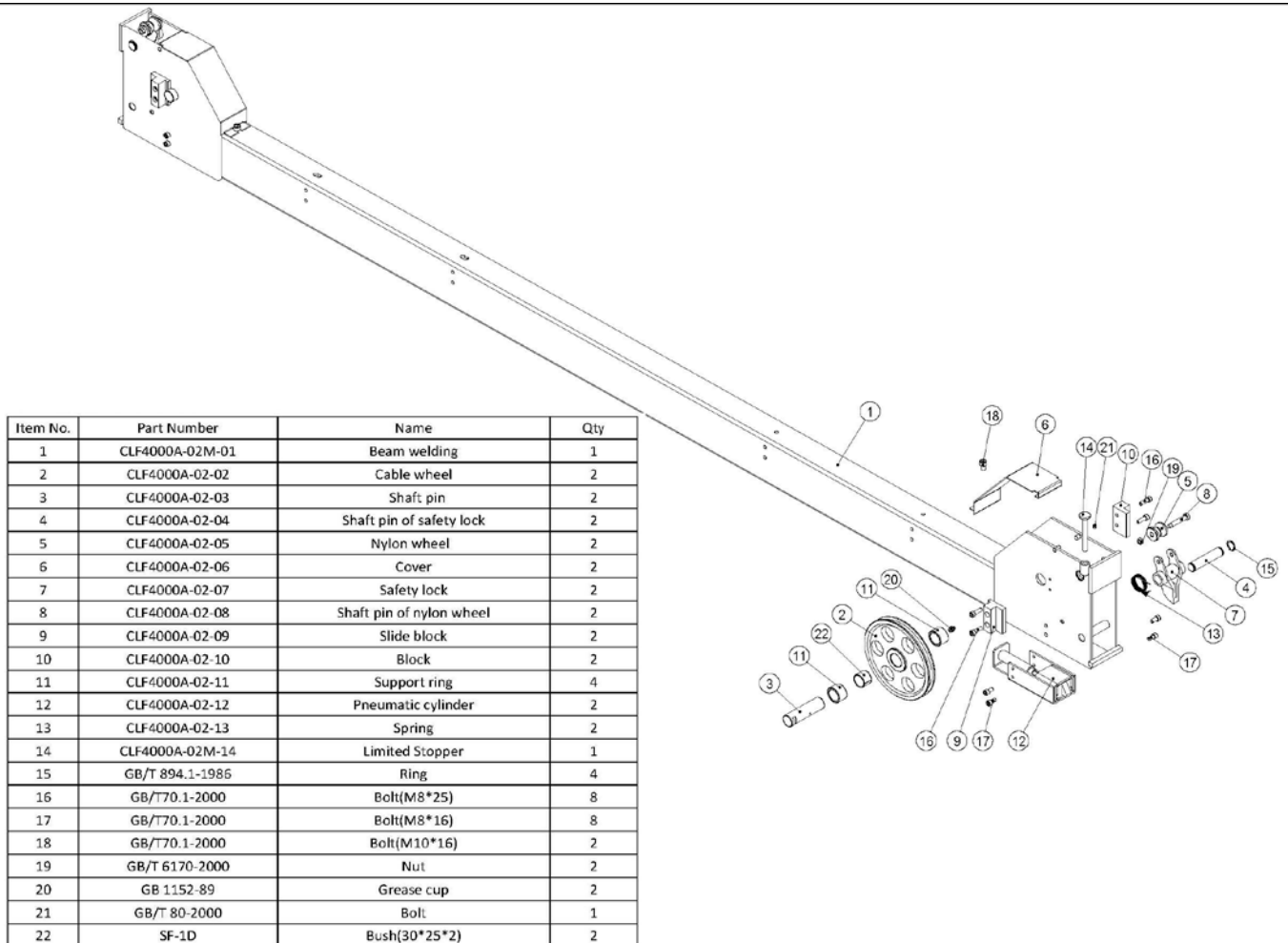
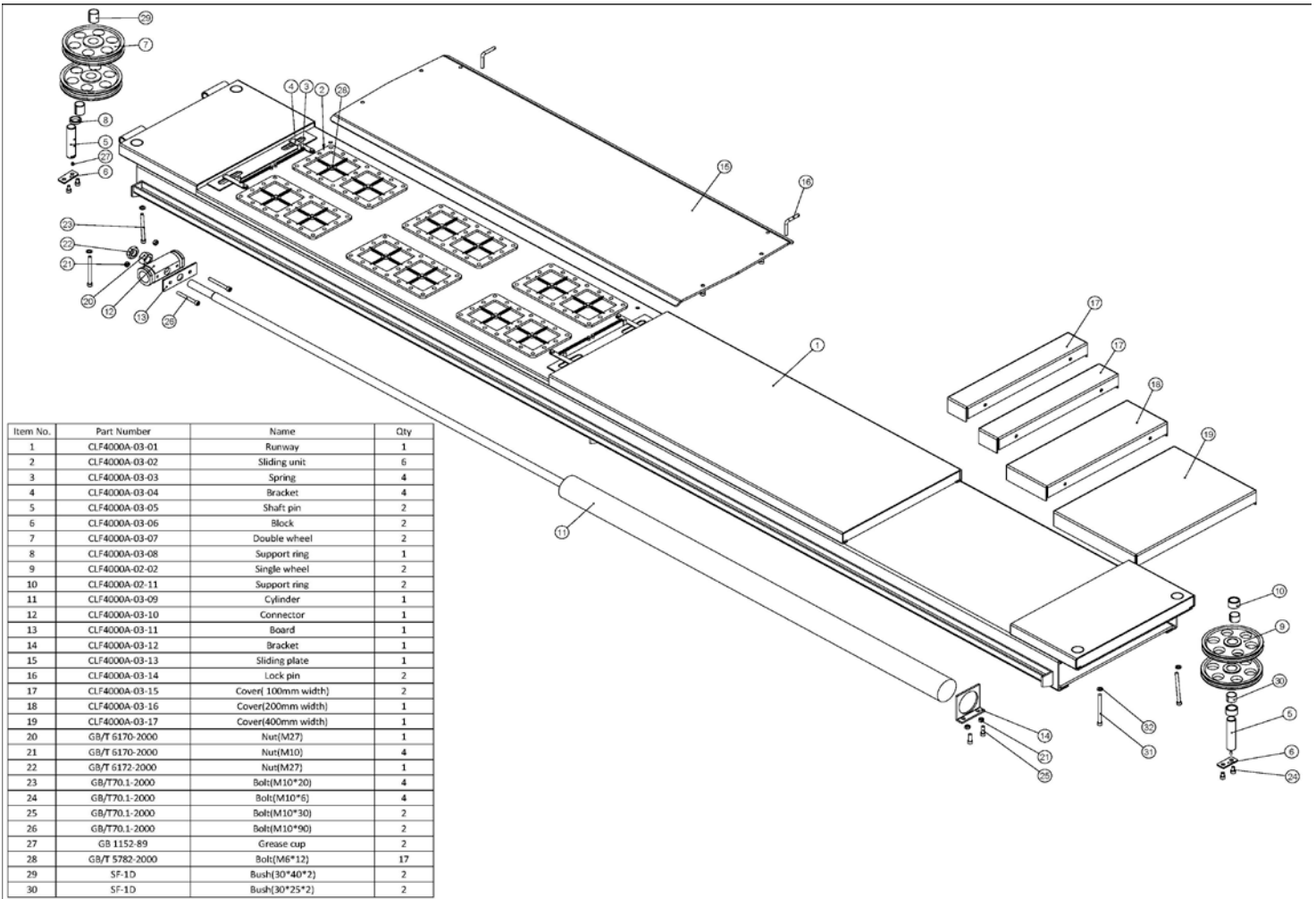
It is the installers' responsibility to ensure that all Fasteners, Nuts, Bolts & Hydraulic Lines are checked and tightened.

It is the installers' responsibility to train the operator(s) of this hoist and to return the Vehicle Hoist Installation & Training Report to activate warranty.

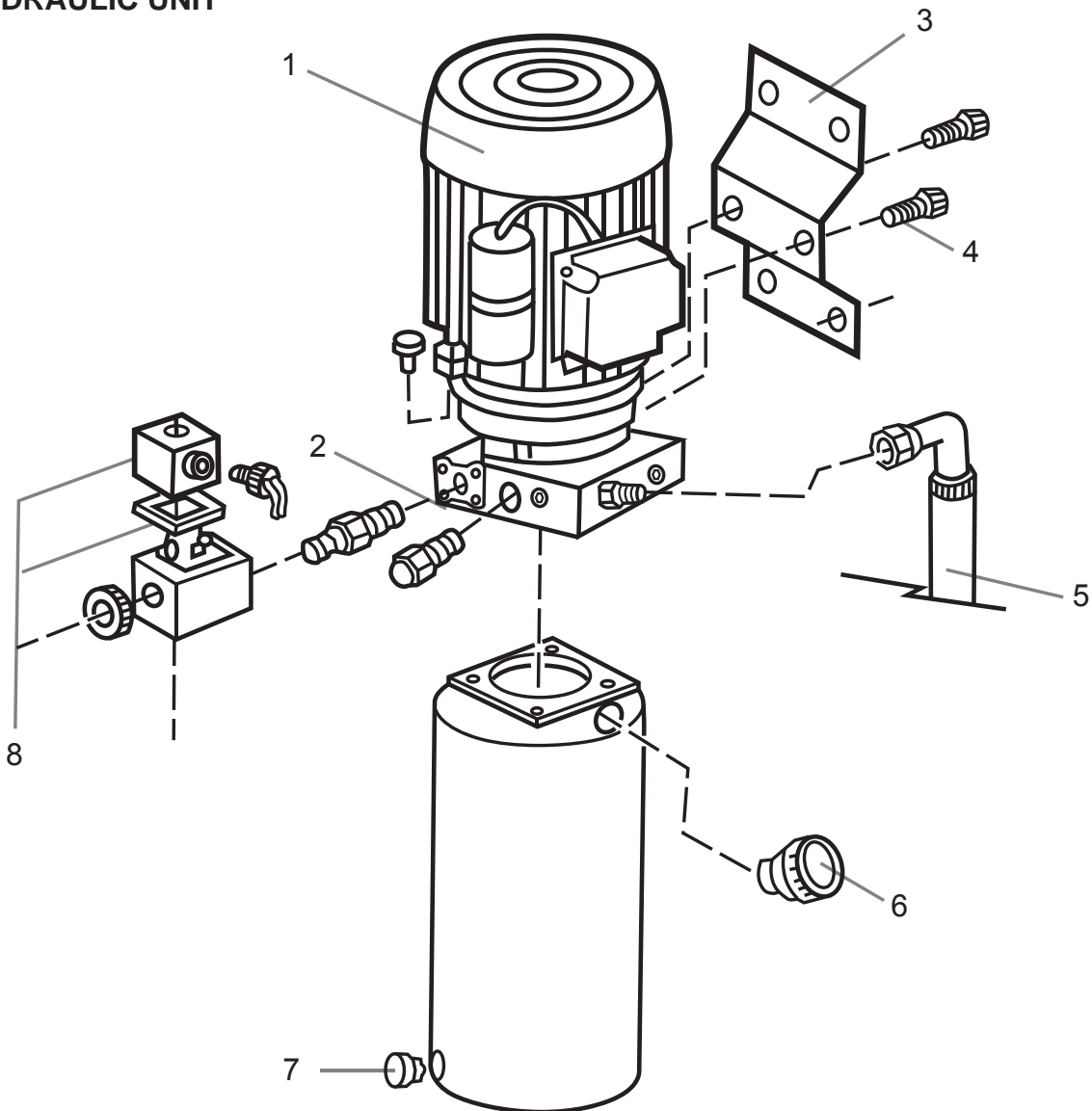
Parts List



Item No.	Part Number	Name	Qty
1	CLF4000A-01M-01	Column welding	1
2	CLF4000A-01-02	Lock strip welding	1
3	CLF4000A-01-08	Screw	1
4	CLF4000A-01-03	Column Top Cover	1
5	CLF4000A-01-04	Control Box	1
6	CLF4000A-01-05	Bracket	1
7	CLF4000A-01-06	Bracket for black tube	1
8	CLF4000A-01-07	Steel cable assembling	2
9	YBLX-ME/8108	Adjust switch	1
10	PUT04	Connector	1
11	GB/T70.1-2000	Bolt(M6*10)	6
12	GB/T70.1-2000	Bolt(M3*15)	2
13	GB/T70.1-2000	Bolt(M4*30)	2
14	GB/T70.1-2000	Bolt(M4*15)	2
15	GB/T 6171-2000	Nut(M33*2)	2
16	GB/T 6172.1-2000	Nut(M20)	3
17	GB/T 6170-2000	Nut(M20)	2

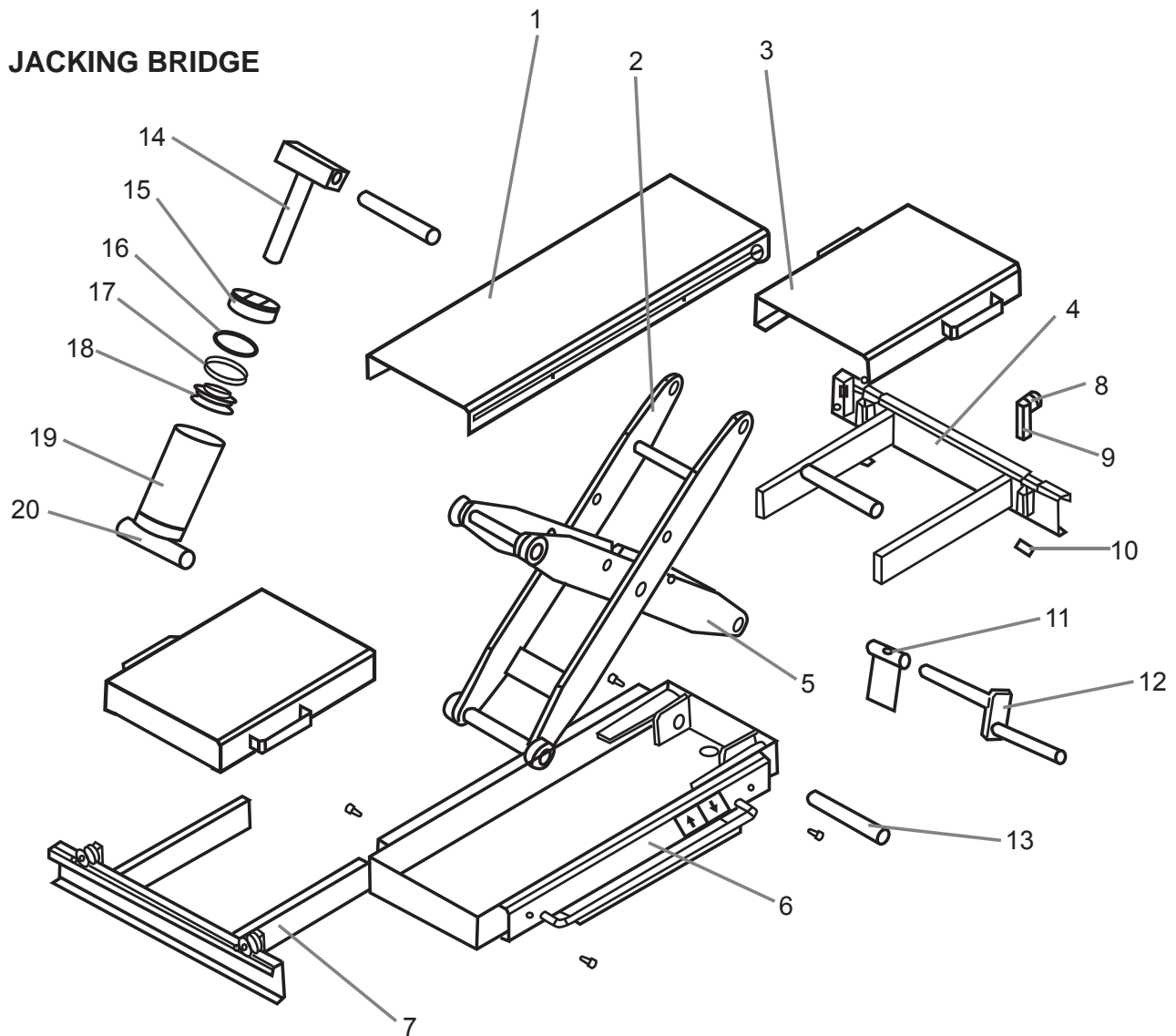


HYDRAULIC UNIT



1. MOTOR
2. RELIEF VALVE
3. SUPPORT
4. SUPPORT BOLT
5. HYDRAULIC HOSE
6. BREATHER CAP
7. DRAIN CAP
8. SOLENOID VALVE SET

JACKING BRIDGE



1. MAIN BOARD

2. LINK 1

3. SLIDE TABLE

4. RAIL GUIDE

5. LINK 2

6. BASE

7. RAIL

10. ONE TOUCH HOSE COUPLER

11. STOPPER

12. STOPPER PIN

13. MIDDLE LINK PIN

14. ROD

15. ROD COVER

16. HEAD SEAL KIT

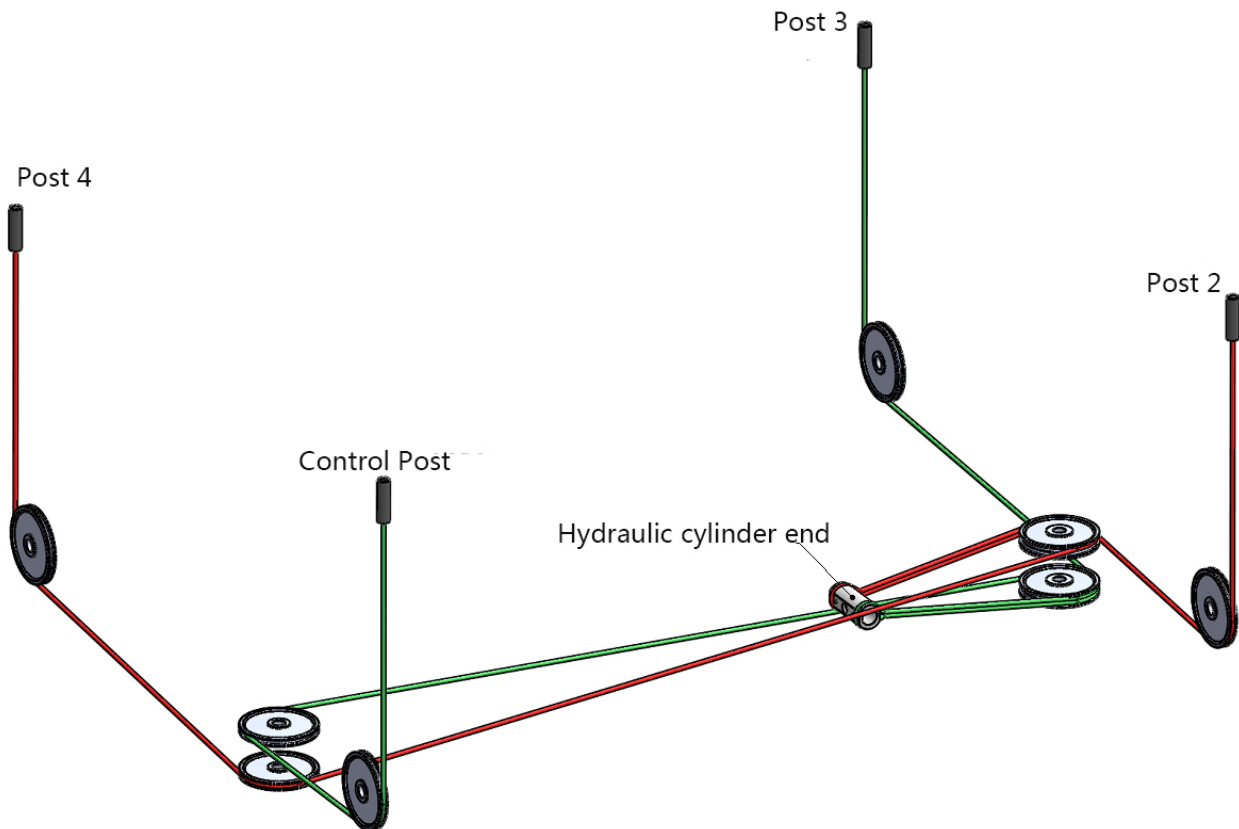
17. PISTON

18. PISTON SEAL KIT

19. TUBE

20. TAIL COVER

Wire Cable Diagram



Technical specifications

Model type	AL-4000A/4000S2
Type	FOUR POST LIFT WITH ALIGNMENT/WITHOUT ALIGNMENT
Capacity	4000kgs
Lifting time	< 55s
Descent time	> 25s
Max. lifting height	1850mm/1800mm
Min. lifting height	208mm/158mm
Overall width	3293mm
Overall height	2274mm
Drive through	2923mm
Power supply	240V/50/Hz/1PH, 415V/50HZ/3PH
Motor	2.2 KW
Noise	≤ 85dB
Installation place	Indoors
Net Weight	1470kgs/1106kgs
Gross Weight	1520kgs/1126kgs
Safety catch type	Pneumatic
Jack lifting capacity	2000kg
Jack lifting height	450mm

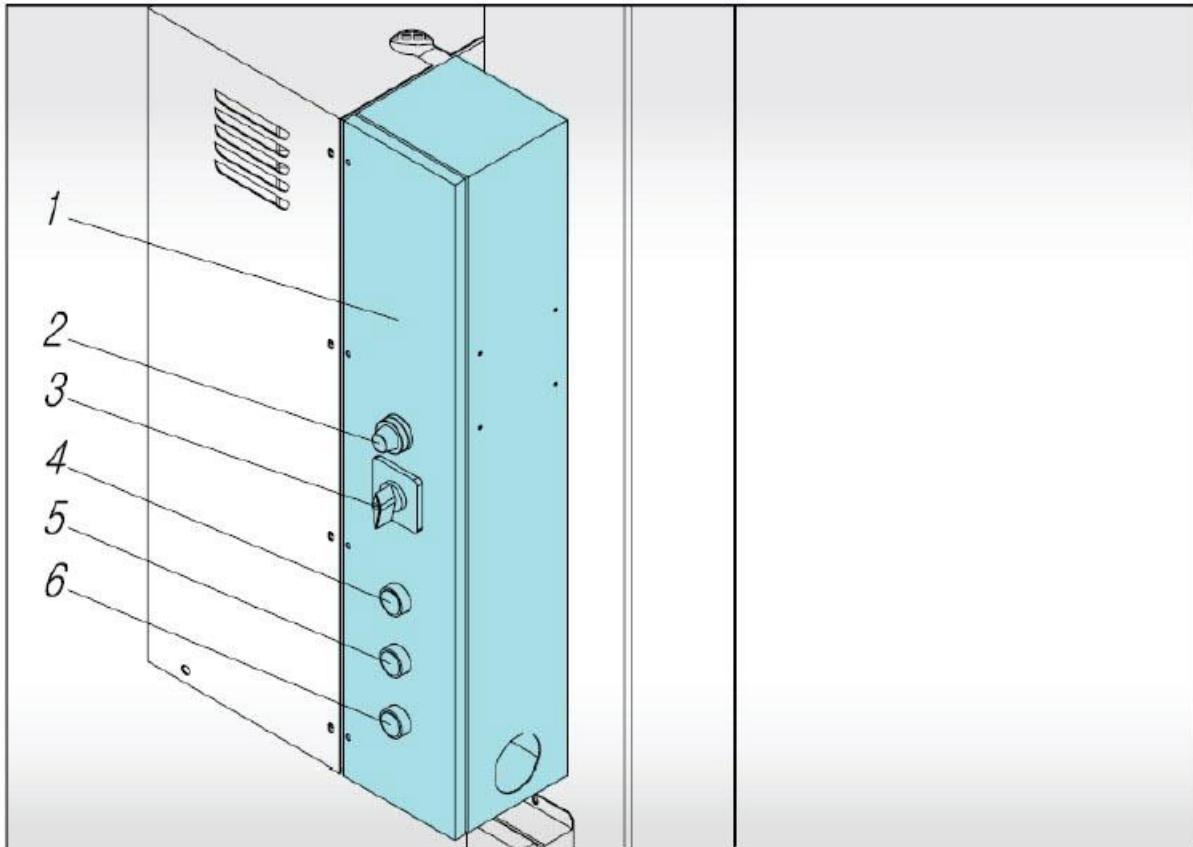
Operation and use



ATTENTION: Read the instructions "GENERAL SAFETY RULES" with the utmost attention.



ATTENTION: Before operating on the control board, make sure that there are no bystanders and around the hoist.

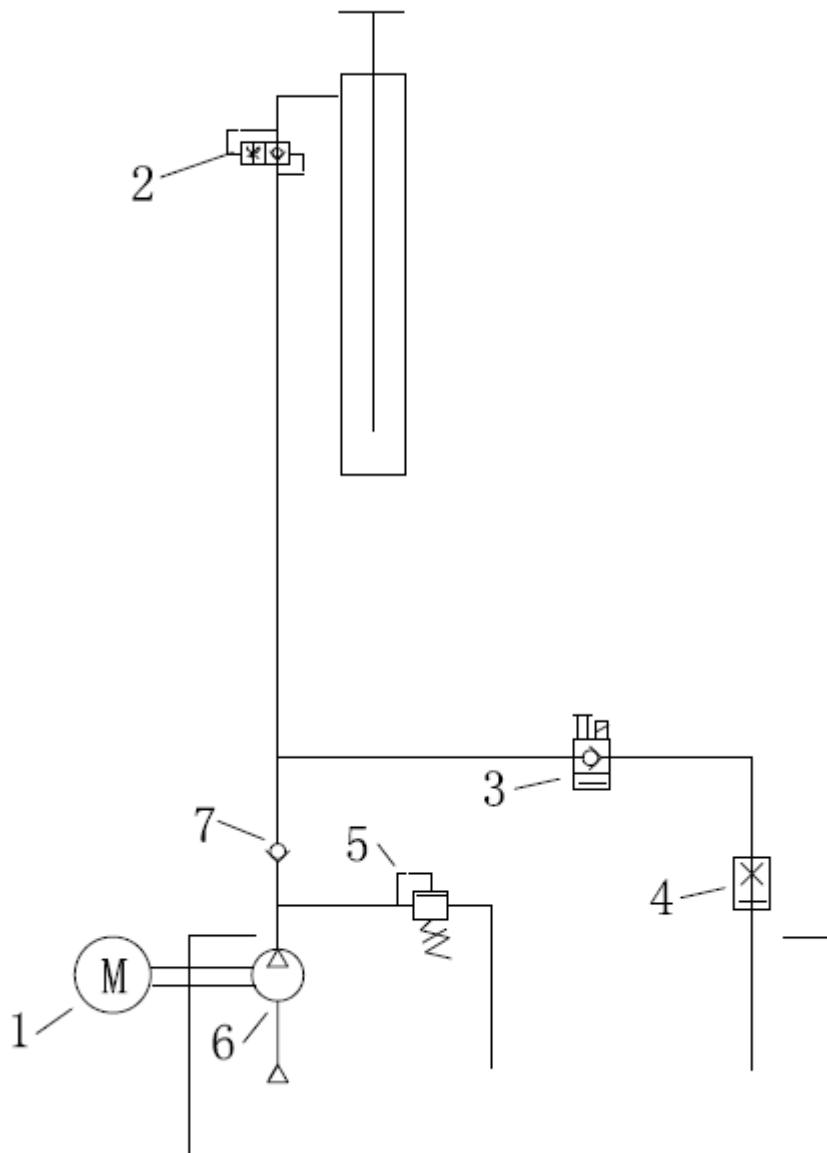


Part No.	Part Name
1	Control Panel
2	Power Lamp
3	Power Switch
4	Up Button
5	Lock Button
6	Down Button

Switch Box Operation

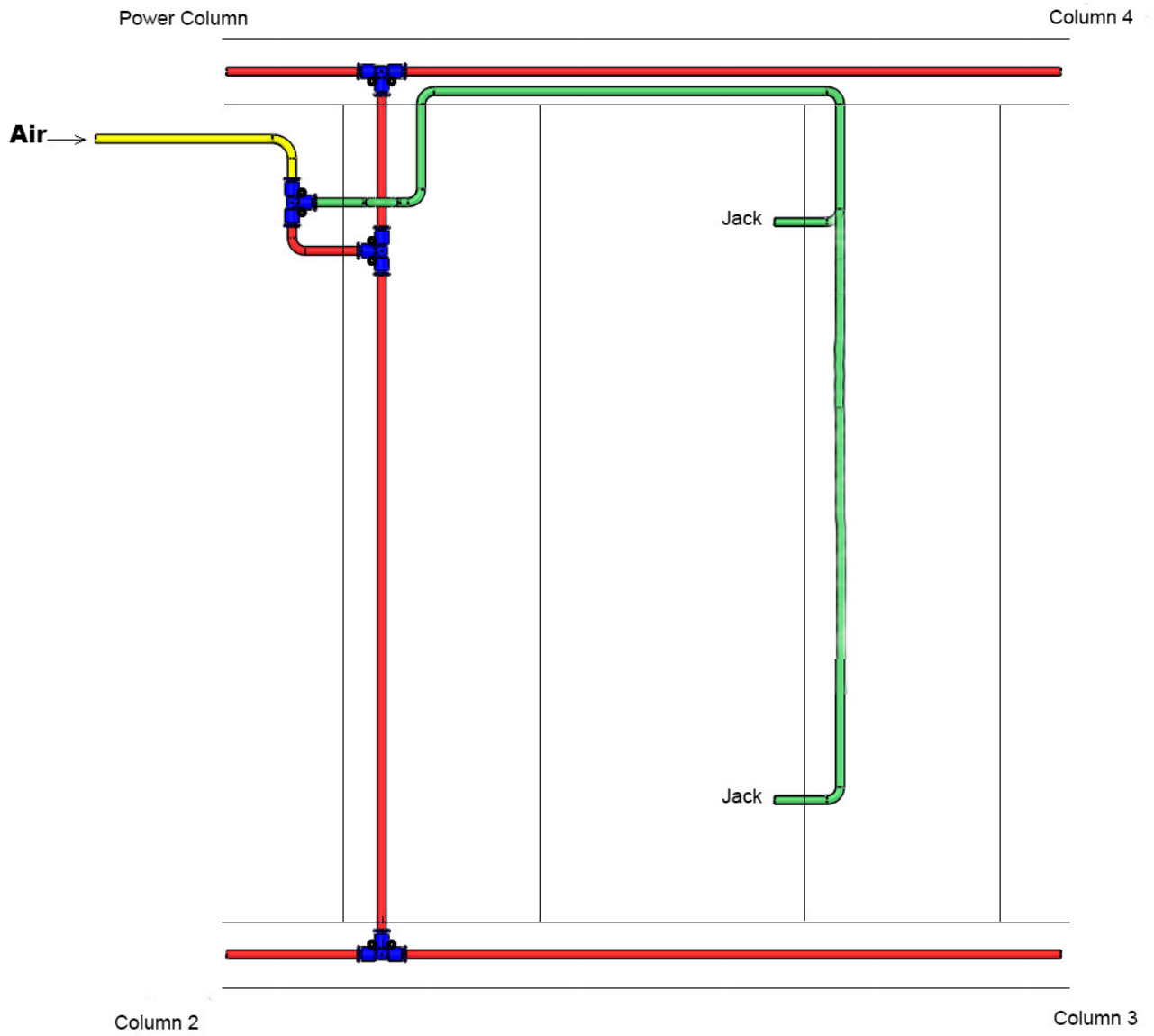
1. Use the up button to raise the hoist.
2. Use the lock button to lower the hoist to the next safety lock.
3. Use the down button to lower the hoist. During this operation the hoist will automatically raise to clear the safety locks before lowering

Hydraulic system diagram

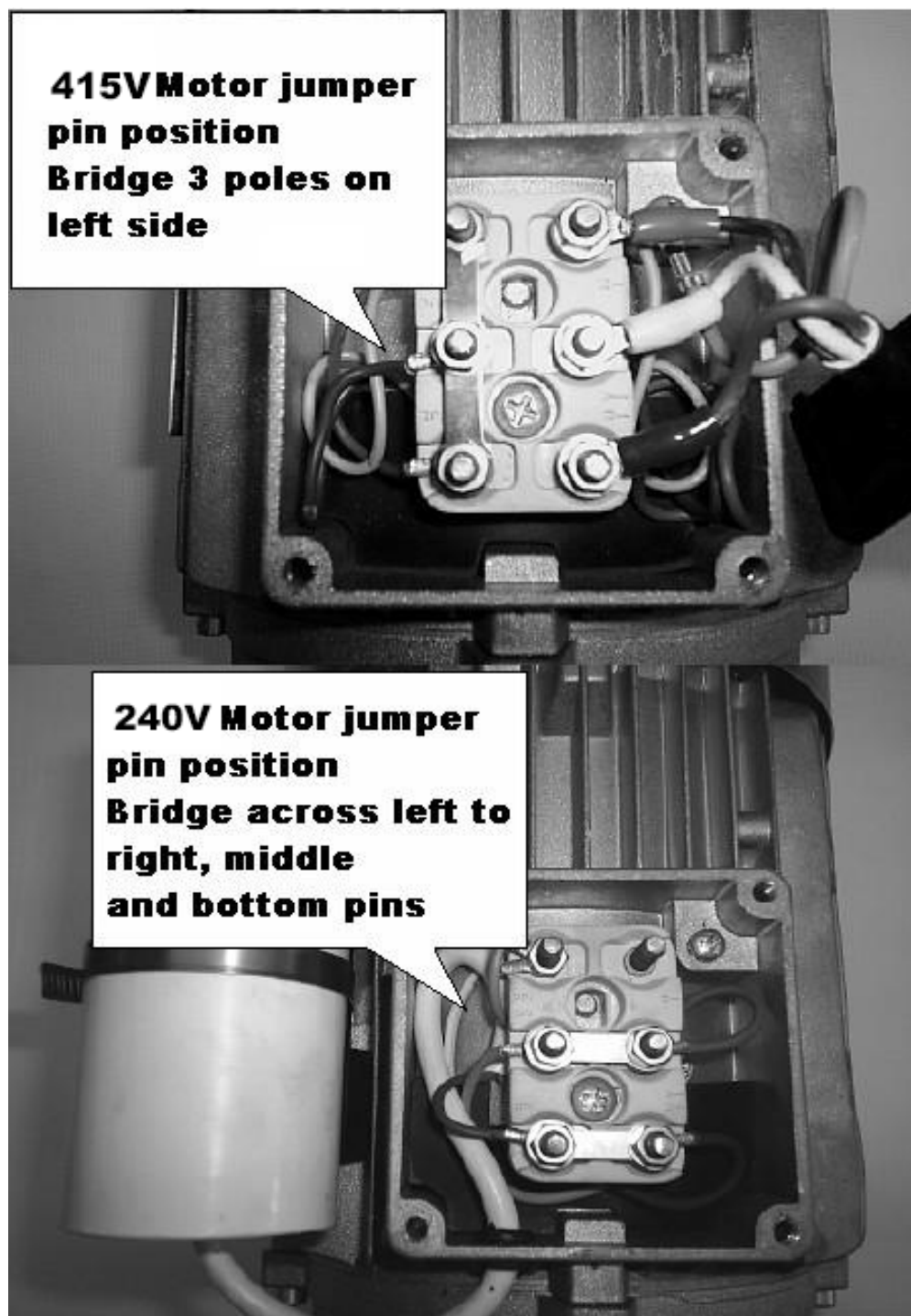


1. Motor
2. Parachute Valve
3. Unloading valve
4. Descend speed regulating valve
5. Relief valve
6. Gear pump
7. Check valve

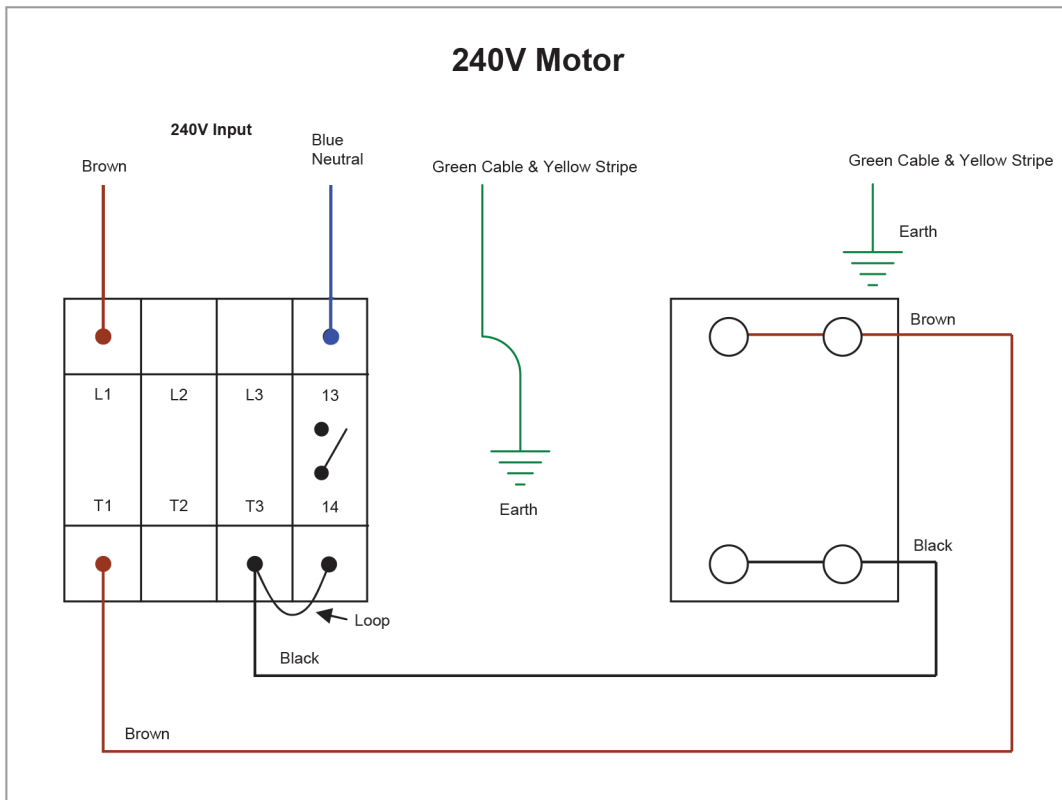
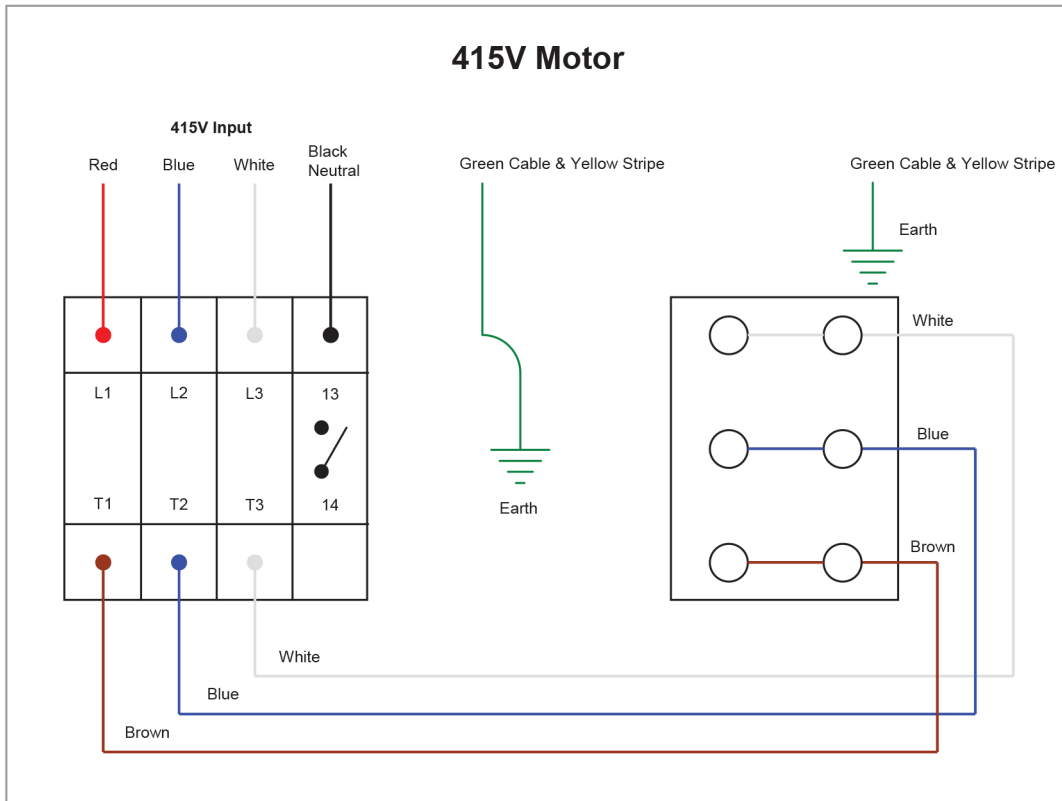
Air Line Diagram



Electric motor jumper pins



Wiring Diagram



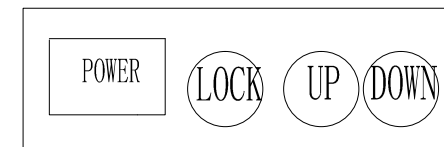
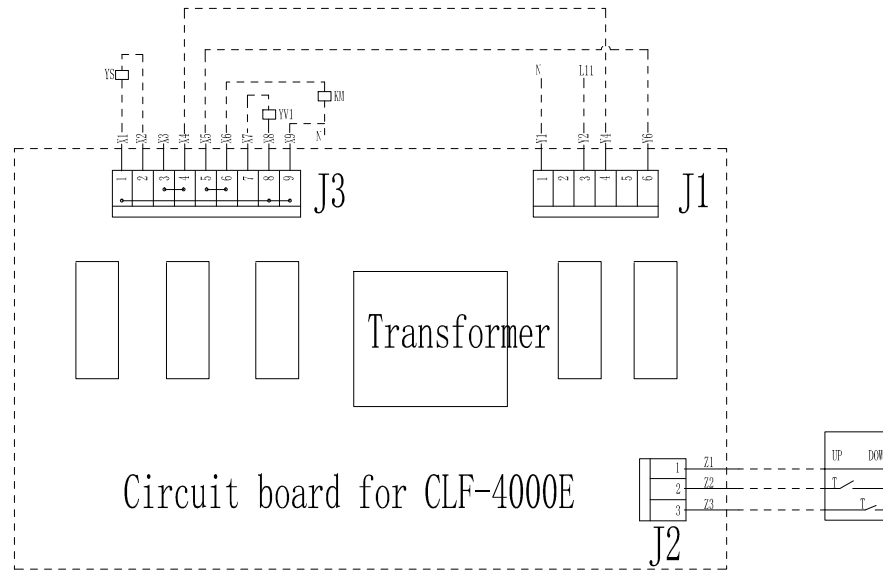
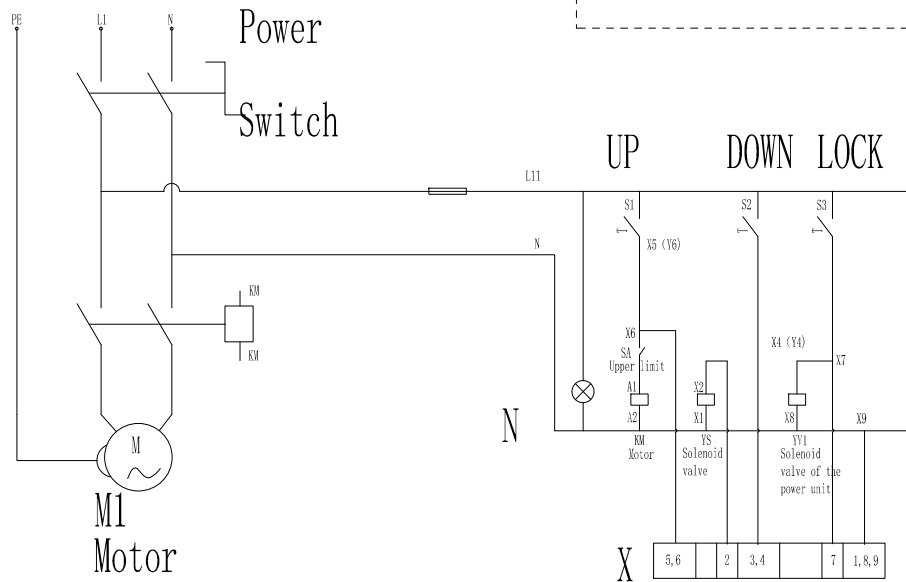
Action description:

1. Press the up button to start the hydraulic motor and lift the platform.

2. Press the down button to start the hydraulic motor and lift the platform.

After passing T1 (Lock), the hydraulic motor stops, the Lock opens and the platform stops.

After passing T2 (valve), the solenoid valve opens and the platform descends.



Note:

- 1、X5 and Y6 connect with S1(UP)。
- 2、X4 and Y4 connect with S2(Down)。
- 3、X7 connect with S3(Lock)。

How to operate Jack

OPERATING INSTRUCTIONS

Operation Of Air/ Hydraulic Jacking Bridges

In some situations, a vehicle may need to be lifted from the platforms of the hoist. The Air / Hydraulic Jacking Bridges allow the technician to remove the vehicle from the platform to work on Tyres & Wheels, Brakes & Suspension. (See Picture 1)

Each Jacking Bridge Has A Maximum S.W.L. (Safe Working Load) of 2000kg and this must not be exceeded.

Max.capacity:	2000kg
Max.liftging height:	450 mm
Distance between pick-up points:	860 -1080 mm
Working air pressure:	6-8bar
NET weight:	130kg

Positioning The Jacking Bridges

1. Slide the jacking bridge into the lifting position under the vehicle, and slide out the lifting extensions so that they will engage the vehicles lifting points, cross member or chassis rails.
2. Place the rubber lifting blocks on top the jack in such a way that they will engage the lifting points, cross member or chassis rails when raised.

Raising & Locking The Jacking Bridges

1. Press on the Air Pump until the jacking bridge raises the vehicle to the desired height. (See Picture 2)
2. Ensure the safety lock is activated manually by using the handle attached to the safety tongue (See Picture 3).

Releasing The Safety Lock & Lowering The Jacking Bridges

1. To lower the jacking bridge, raise the jack slightly and manually disengage the safety lock. Return the lift extensions to the closed position and remove the rubber blocks.
2. Once the above has been performed Press on the Air Pump until the jacking bridge has lowered to its lowest position. (See Picture 4)



Picture 1



Picture 2



Picture 3



Picture 4

Maintenance

The several maintenance operations to be carried out are described below. A low operation cost and a long life of the machine depends from constant observation of the operations.



CAUTION: The listed intervention times are given for information and they refer to normal operating conditions. They can change according to the kind of service, environment (more or less dusty), frequency of use, etc. In case of heavier conditions, servicing must be increased. When filling up or changing the hydraulic fluid, use the same kind of oil used previously.

Periodical maintenance operations

9.1.1 EVERY WEEK

- Check the cleanness of the mobile parts
- Check the safety devices as previously described.
- Check hydraulic fluid levels as follows
- If maximum lift height is not achieved, check limit switch position, if ok check oil level, add oil.
- Fill up through the filler cap using 32-45 viscosity hydraulic oil.
- Check tension of foundation bolts (dyne bolts)

9.1.2 EVERY MONTH

- Check tightening of screw.
- Check the hydraulic system seal and tighten the loose unions, if necessary.
- Check the hydraulic hoses condition. In case they are worn, replace them by new hoses of the same kind.
- Check the greasing and wear condition of pins, rollers, bushes of trolleys structure as well as arms and relevant extensions. If necessary, replace the damaged parts by original spare parts.

9.1.3 EVERY 2000 HOURS RUNNING

- Empty the tank and check the condition of the hydraulic fluid. Clean the oil filter. If the operations are carried out with care, there will be an advantage for the user who will find the equipment in perfect condition each time he restarts work.
- Carry out cable adjustment, to level platforms by means of adjusting the nuts on the cable ends - see figure below.



Trouble shooting

A list of possible troubles and solutions is given below

TROUBLE	POSSIBLE CAUSE	SOLUTION
The hoist does not work	The main switch is not turned on	Turn the switch on
	There is no power	Check Power on to the restore if necessary
	The electrical wires are disconnected	Replace
	Fuses are blown	Replace
The hoist does not raise	The motor direction of rotation is not correct	Interchange the two phases on the main switch.
	The oil in the hydraulic unit is not sufficient.	Add some hydraulic oil
	The UP button is faulty	Check UP button and connection for proper operation. Replace, if needed.
	The maximum height limit switch is faulty.	Check the switch and relevant connection for proper operation. Replace, if needed.
	The lowering solenoid valve does not close	Check and clean, if dirty, or replace, if faulty.
	The suction pump filter is dirty	Check and clean if needed.
The lifting capacity is not sufficient	The pump is faulty	Check the pump and replace, if needed
	Oil leakages in hydraulic circuit	Check the circuit for any leakage
The hoist does not lower when the DOWN button is pressed	The lowering solenoid valve does not work properly	Verify if it is powered and check magneto for damage (replace if disconnected or blown)
	Safety solenoid valve is jammed	Verify if it is powered and check magneto for damage (replace if disconnected or blown)
	The DOWN button is faulty	Replace the DOWN button
Carriages do not stop in standing position	The lowering and solenoid valves stay opened.	Verify that solenoid valve sliders are not blocked
	Leakage in the hydraulic pipelines.	Check connections for proper tightening and tubes for damage(replace if damaged)
	Hydraulic cylinders are faulty	Check and replace if needed.
The hoist does not lower smoothly	Presence of air in the hydraulic system	Bleed the hydraulic system.
Lifting is not synchronized	Check cable adjustments for correct engagement on the locks.	Adjust the cable nuts at the top of the column.
The hoist does not stop at safety height	The safety height limit switch does not work	Check the limit switch and replace if needed.
The motor does not stop when the hoist reaches it maximum height	The maximum height limit switch does not work	Check the limit switch and replace if needed.

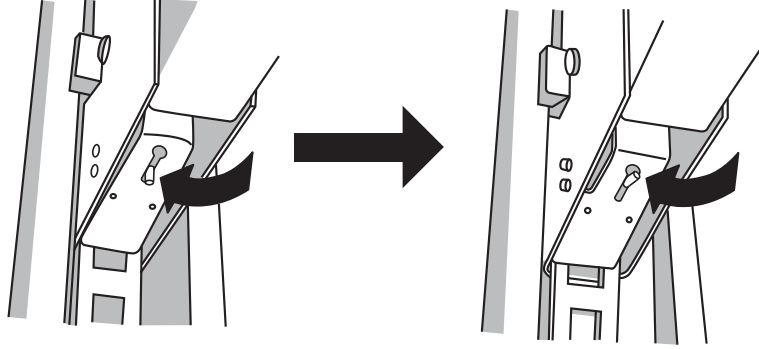
Emergency Decending

CIRCUMSTANCES

ELECTRICAL FAILURE OR ANY HYDRAULIC LINE FAILURE

PREPARATION BEFORE PROCEEDING

- 1) CLEAR OBSTACLES UNDERNEATH OF HOIST.
- 2) TURN THE POWER SWITCH OFF.
- 3) NEVER ENTER UNDER THE HOIST DURING THE PROCEDURE.
- 4) MAKE SURE SAFETY DEVICE ON 4 POSTS IS DISABLED.



- 5) IF THE SAFETY DEVICE IS ON LOCKED POSITION, USE JACK TO LIFT THE PLATFORM AND DISABLE THE DEVICE.

** NEVER ALLOW ANY PERSON ENTERING UNDER HOIST WHILE PERFORMING THIS PROCEDURE

PROCEDURE

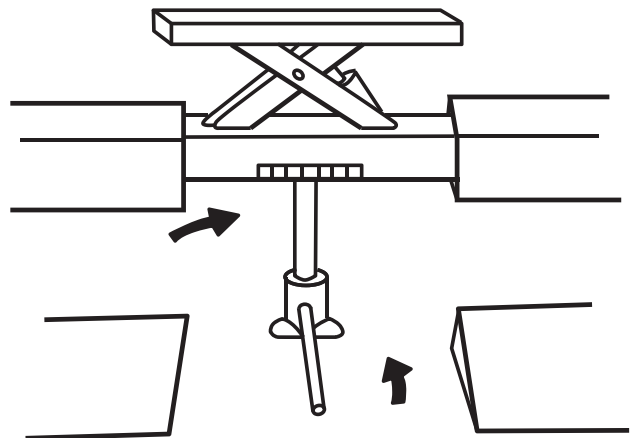
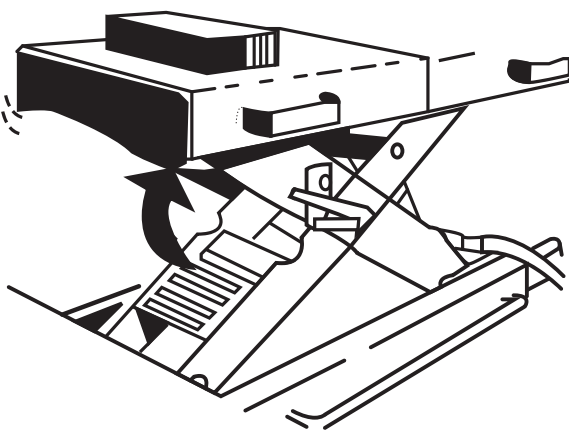
IF YOU HAVE ANY DOUBT FOR PERFORMING THIS OPERATION, CONTACT TRAINED PERSONNEL.

AFTER COMPLETION

REPOSITION ALL THE BOLTS AND NUTS INCLUDING EMERGENCY COCK VALVE TO ITS ORIGINAL POSITION AND COVER THE PANEL

** FOLLOW SAME PROCEDURE FOR JACK BRIDGES AS ABOVE .

- 1) MAKE SURE THE SAFETY LOCK ON JACK BRIDGE IS CANCELLED



* If it is engaged, use garage jack and lever and push top part of the jack bridge and release safety lock.

- 2) INSTEAD OF LOOSENING 2 LOOSEN EITHER 3 OR 4 JACK BRIDGE RELEASE VALVE IN STEP OF ABOVE PROCEDURE

SAFETY OPERATING PROCEDURES

Vehicle Hoist

DO NOT use this machine unless the operator has been thoroughly instructed in its safe use and operation.



Safety glasses must be worn at all times in work areas.



Long and loose hair must be contained.



Sturdy footwear must be worn at all times in work areas.



Close fitting/protective clothing must be worn.



Rings and jewellery must not be worn.



Do not stand on hoist whilst hoist is in operation.

A vehicle hoist must not be operated unless it has a current certificate of inspection.

PRE-OPERATIONAL SAFETY CHECKS

1. Ensure that vehicle hoist has operating and maintenance instructions permanently located and clearly visible.
2. The equipment must be used in accordance with manufacturer's instructions.
3. Check the capacity of the hoist compared to the weight of the vehicle. If vehicle is too heavy, do not proceed.
4. Ensure the area is clean and clear of grease, oil, and objects that may be a slip/trip hazard.
5. Familiarise yourself with and check all machine operations and controls.
6. Check all safety devices are in good condition.
7. Ensure support arms are capable of being locked in position.
8. Ensure rubber pads are in good condition on all load points.
9. Faulty equipment must not be used. Immediately report suspect equipment.

OPERATIONAL SAFETY CHECKS

1. Centre vehicle on hoist, ensuring that the weight is evenly distributed to the front and rear.
2. Identify the correct jacking points.
3. Only one person shall operate the hoist at a time.
4. Ensure hoist area is clear of people and equipment before operating.
5. Never leave the hoist running unattended.
6. Check vehicle stability by looking at the jacking points.
7. Engage and check for the correct engagement of the locks.
8. At the completion of work lower the vehicle hoist and ensure all equipment is left in a safe position.

HOUSEKEEPING

1. Switch off equipment.
2. Leave the equipment and work area in a safe, clean and tidy state.

POTENTIAL HAZARDS

■ Falling objects ■ Trapping hazards ■ Crushing hazards ■ Entanglement hazards

This Safety Operating Procedure does not necessarily cover all possible hazards associated with the machine and should be used in conjunction with other references. It is designed to be used as an adjunct to the operation in the safety procedures and to act as a reminder to the operator prior to machine use.

4000kg

4 Post Hoist

OPERATING INSTRUCTIONS

The hoist should only be operated by personnel that have been thoroughly trained in operation and maintenance of the hoist.

1. Position the vehicle between the columns, turn off the engine and apply the park brake.
2. Place the manual wheel chocks in front and rear of at least one wheel.
3. Make sure that all personnel are clear and there are no obstructions around the hoist.

TO RAISE THE HOIST

1. Press the "UP" button on the control box until the desired working height is obtained checking for any obstructions.
2. Once the hoist has reached the desired working height lower the hoist onto the safety locks by means of pressing the lock button on the control box.
Note: Check for correct engagement of each lock.

TO LOWER THE HOIST

1. Raise the hoist 100mm or until the locks are clear.
2. Push on the "DOWN" button.
3. Check for any obstructions under the hoist when lowering and all personnel are clear of the area.
4. When the hoist has been lowered to the ground, remove the wheel chocks.
5. Switch off power to the hoist.

MODEL: AutoLift AL-4000S2	SERIAL NO.:	APPROVALS: WAH21048
-------------------------------------	--------------------	-------------------------------

Design Code: AS1418.9 -1996



ADVANCE AUTOQUIP WARRANTY

GENERAL WARRANTY INFORMATION:

ADVANCE AUTOQUIP'S OBLIGATION UNDER THIS WARRANTY IS LIMITED TO REPAIRING OR REPLACING ANY PART OR PARTS RETURNED TO THIS FACTORY, TRANSPORTATION CHARGES PREPAID, WHICH PROVE UPON INSPECTION TO BE DEFECTIVE AND WHICH HAVE NOT BEEN MISUSED. DAMAGE OR FAILURE TO ANY PART DUE TO FREIGHT DAMAGE OR FAULTY MAINTENANCE IS NOT COVERED UNDER THIS WARRANTY. ADVANCE AUTOQUIP RESERVES THE RIGHT TO DECLINE RESPONSIBILITY WHEN REPAIRS HAVE BEEN MADE OR ATTEMPTED BY OTHERS. THIS WARRANTY DOES NOT COVER DOWNTIME EXPENSES INCURRED WHEN UNIT IS IN REPAIR. THE MODEL NAME AND SERIAL NUMBER OF THE EQUIPMENT MUST BE PROVIDED WITH ALL WARRANTY CLAIMS. THIS WARRANTY STATEMENT CONTAINS THE ENTIRE AGREEMENT BETWEEN ADVANCE AUTOQUIP AND THE PURCHASER UNLESS OTHERWISE SPECIFICALLY EXPRESSED IN WRITING. THIS NON-TRANSFERABLE WARRANTY APPLIES TO THE ORIGINAL PURCHASER ONLY. THIS WARRANTY IS APPLICABLE TO UNITS LOCATED ONLY IN AUSTRALIA. CONTACT ADVANCE AUTOQUIP FOR SPECIFIC WARRANTY PROVISIONS FOR UNITS LOCATED OUTSIDE OF THESE COUNTRIES.

STRUCTURAL COMPONENTS:

ALL STRUCTURAL AND MECHANICAL COMPONENTS OF THIS UNIT ARE GUARANTEED FOR A PERIOD OF FIVE YEARS, FROM THE DATE OF INVOICE, AGAINST DEFECTS IN WORKMANSHIP AND/OR MATERIALS WHEN LIFT IS INSTALLED AND USED ACCORDING TO RECOMMENDATIONS.

POWER UNIT:

POWER UNIT COMPONENTS (PUMP AND RESERVOIR) ARE GUARANTEED A PERIOD OF TWO YEARS, FROM THE DATE OF INVOICE, AGAINST DEFECTS IN WORKMANSHIP AND/OR MATERIALS WHEN THE LIFT IS INSTALLED AND USED ACCORDING TO RECOMMENDATIONS.

ELECTRICAL COMPONENTS:

ALL ELECTRICAL COMPONENTS (INCLUDING MOTOR) ARE GUARANTEED A PERIOD OF ONE YEAR FOR PARTS ONLY (EXCLUDING LABOR), FROM THE DATE OF INVOICE, AGAINST DEFECTS IN WORKMANSHIP AND/OR MATERIALS WHEN THE LIFT IS INSTALLED AND USED ACCORDING TO RECOMMENDATIONS.

PNEUMATIC (AIR) COMPONENTS:


ALL PNEUMATIC (AIR) COMPONENTS (I.E. AIR CYLINDERS AND POPPET AIR VALVES) ARE GUARANTEED FOR ONE YEAR FOR PARTS ONLY (EXCLUDING LABOR), FROM THE DATE OF INVOICE, AGAINST DEFECTS IN WORKMANSHIP AND/OR MATERIALS WHEN THE LIFT IS INSTALLED AND USED ACCORDING TO RECOMMENDATIONS.

EXCLUSIONS:

WARRANTY DOES NOT INCLUDE CONSUMABLE ITEMS SUCH AS HYDRAULIC OIL, LIFTING PADS, OIL SEALS, VEE BELTS AND SLIDING BLOCKS. CABLE ADJUSTMENTS ARE NOT COVERED UNDER WARRANTY AND ARE A NECESSARY MAINTENANCE ITEM THAT MUST BE CARRIED OUT BY THE OWNER / END USER.

THIS WARRANTY SUPERSEDES ALL OTHER WARRANTY POLICIES PREVIOUSLY STATED AND IN ALL OTHER ADVANCE AUTOQUIP'S PRODUCT SPECIFIC LITERATURE.

COMMISSIONING REPORT

1. Details of Customer	 2 McDonald Crescent Bassendean WA 6054 P: 08 9279 1663 E: sales@aaq.net.au			
Customer Name:				
Installation Address:				
2. Hoist Details				
Model No: AutoLift AL-4000S2				
Hoist Type: 4 post, 4 tonne Vehicle Hoist				
Installation Date:				
3. Commissioning Report	Yes	No	N/A	Comments
Safety Devices				
Safety devices incorporated into the design of the vehicle to AS/NZS 1418.9				
Welds				
Visual check all welds completed and comply to requirement of AS/NZS 1554				
Hydraulic Equipment and Controls				
Visual check carried out for leaks				
Pneumatic Equipment and Controls				
Visual check carried out for leaks				
Safety Locks				
Safety locks tested for correct operation				
Support Pads				
Checked for good working order				
Wheel Stops				
Supplied with the hoist and in good working order				
Hoist Motion Limits				
Checked for correct operation				
Load Test and Speed Check				
Hoist checked with load for correct operation and speed control tested				
Wire Ropes				
Checked wire ropes for correct installation and tension				
Concrete Floor				
Concrete floor is a suitable depth for installation				

COMMISSIONING REPORT

Location of Vehicle Hoist & Vehicle Clearances			
Vehicle hoist or any part of the load is positioned no less than 600mm away from any fixed structure			
Provisions have been made for effective clearances above the vehicle when the hoist is in its fully raised position.			
Markings - Hoist Checked for Relevant Marking Including:			
Make & Model Number			
Serial number			
Rated Capacity			
Reference to maintenance			
Operation instructions			
Screw and Nut Gaps			
Hoist compliance plate showing design registration			
Functional Test			
Vehicle hoist has been tested and all safety devices, limit switches and control function interlocks have been tested for correct operation.			
Demonstration			
The installer has demonstrated the operation of the vehicle hoist to the owner or operator			
Electrical Equipment and Controls			
Lock off isolating switch installed			
Emergency stop button installed			
3. Details of Electrical Contractor			
Trading Name:	EC Licence Number:		
Address:	Telephone Number:		
4. Signature			
	Name:		
	Date:		
I, being the person responsible for completing the commissioning report have exercised reasonable skill and competency when completing the report and hereby certify that the vehicle hoist has been commissioned fit for use as per the Australian / New Zealand Standard 1418.9:1996 Vehicle Hoists.			