

SCISSOR HOIST

AutoLift AL-8803



Model No: FT-8803 Mid-Rise Heavy Duty Scissor Hoist
3000Kg Maximum Lifting Capacity
Design Registration Approval Number: WAH21737
Design Code: AS1418.9-1996

INSTALLATION MANUAL & OPERATION INSTRUCTIONS



READ FIRST



DO NOT use the machine until you read and understand all the dangers, warnings and cautions in this manual.



- READ THE ENTIRE CONTENTS OF THIS MANUAL BEFORE INSTALLATION AND OPERATION. BY PROCEEDING YOU AGREE THAT YOU FULLY UNDERSTAND AND COMPREHEND THE FULL CONTENTS OF THIS MANUAL. FORWARD THIS MANUAL TO ALL OPERATORS. FAILURE TO OPERATE THIS EQUIPMENT AS DIRECTED MAY CAUSE INJURY OR DEATH.

Specifications subject to change without notice.

Note: While all due care and attention has been taken in the preparation of this document, Advance AutoQuip shall not be liable for any inaccuracies or omissions which may occur therein

Advance AutoQuip

2 McDonald Crescent | Bassendean WA 6054

Ph: 08 9279 1663 | Fax: 08 9279 1667 | E: sales@aaq.net.au | W: www.aaq.net.au

INDEX

1. Important safety instructions.....	4-5
1.1 Important notices	
1.2 Qualified personnel	
1.3 Danger notices	
1.4 Warning signs	
1.5 Sound level	
1.6 Training	
2. Overview of the hoist	5-6
2.1 General descriptions	
2.2 Technical data	
2.3 Construction of the hoist	
3. Installation instructions	6-8
3.1 Preparations before installation	
3.1.1 Tools and equipments needed	
3.1.2 A list for parts checking	
3.1.3 Ground conditions	
3.2 Precautions for installation	
3.3 Installation	
3.4 Items to be checked after installation	
4. Operation instructions	8-11
4.1 Precautions	
4.2 Descriptions of control box	
4.3 Flow chart for operation	
4.4 Operating instructions	
4.5 Emergency lowering in case of no power	
5. Trouble shooting	12
6. Maintenance.....	13
7. Annex	14-24
Annex1, Packing list of the whole hoist	
Annex2, Overall diagram	
Annex3, Hydraulic working system	
Annex4, Diagram for pneumatic system.	
Annex5, Wiring diagram	
Annex6, Separate diagrams for the hoist	
Annex7. Spare parts list	
Annex8, Size and weight requirements on vehicles	
8. Safe Operating Procedure.....	25
9. Warranty.....	26

User's Records

Fill the following blanks with the information on the nameplate.

Model No. : _____

Serial No. : _____

Production Date: _____

The following specially trained people are permitted to operate and maintain this hoist.

- 1.
- 2.
- 3.
- 4.
- 5.
- 6.
- 7.
- 8.
- 9.
- 10.

Installation Records

Model No. : _____

Serial No. : _____

Customer's Name: _____

Installation Date: _____

Declaration

The above mentioned hoist has been correctly installed and all its functions including the reliability of safety locks have passed strict tests. Therefore we hereby declare that this hoist is in good working condition after installation is finished.

Installation date

Installer's signature

User's signature

1. IMPORTANT SAFETY INSTRUCTIONS

1.1 Important notices

Advance AutoQuip will offer one-year's quality warranty for the whole machine, during which any quality problem will be properly solved to the user's satisfaction. However, we will not take any responsibility for misuse resulted from improper installation and operation, overload running or unsuitable ground condition.

This middle rise scissor hoist is especially fit for tyre service or other quick service around vehicles. Users must always bear in mind that this AL-8803 is specially designed for lifting motor vehicles, so never use it for any other purposes. Otherwise, we cannot take any responsibility for damages or losses due to misuse of the hoist.

Make sure to pay careful attention to the label of the lifting capacity attached on the hoist and never try to lift cars exceeding the lifting capacity of the hoist.

Read this manual carefully before operating the machine.

Users are not permitted to make any modification to the control unit or the hoist.

1.2 Qualified personnel

1.2.1 Only persons who have been properly trained, can operate the hoist.

1.2.2 Electrical connection must be done by a qualified electrician.

1.2.3 Unauthorised people should not be permitted within the lifting area.

1.3 Danger notices

1.3.1 Do not install the hoist on any asphalt surface.

1.3.2 Read and understand all safety warnings before operating the hoist.

1.3.3 Always pay attention while the hoist is in motion.

1.3.4 Keep hands and feet away from any moving parts. Keep feet clear of the hoist when lowering.

1.3.5 Only properly trained personnel can operate the hoist.

1.3.6 Proper clothing and safety protection must be worn.

1.3.7 Keep the area around the lift tidy.

1.3.8 Do not exceed the maximum lifting capacity.

1.3.9 Always insure the safety locks are engaged before any attempt to work near or under the vehicle. Never remove safety related components from the hoist. Do not use if safety related components are damaged or missing.

1.3.10 Do not rock the vehicle while on the hoist or remove any heavy component from vehicle that may cause excessive weight shift.

1.3.11 Check at any time the parts of the hoist to ensure the agility of moving parts and the performance of synchronization. Ensure regular maintenance and if anything abnormal occurs, stop using the hoist immediately and contact your dealer or service agent.

1.3.12 Lower the hoist to its lowest position and do remember to cut off the power source when service finishes.

1.3.13 Do not modify any parts of the hoist.

1.3.14 If the hoist is going to be left unused for a long time, users are required to:

- a. Disconnect the power source;
- b. Empty the oil tank;
- c. Lubricate the moving parts with spray lube.

Attention: For environment protection, please dispose the disused oil in a proper way.

1.4 Warnings (Read and understand all safety warnings before operation)

All safety warning labels are clearly depicted on the hoist to ensure that the operator is aware of and avoids the dangers of using the hoist in an incorrect manner. The labels must be kept clean and they have to be replaced if detached or damaged. Please read carefully the meaning of each label.

CAUTION		WARNING		
				
Never stand, work or be under the lift while it is being operated.	The operator should not stand too close to the lift but in a safe position away from moving parts.	When the lift is lowered, no auxiliary stand or other blocking objects should be near the lift.	Do not shake or push the vehicle whilst it is on the lift.	Only trained technicians are permitted to operate this lift.
				
Ensure feet and other parts of your body are well clear of the lift when it is being lowered or when lifting.	Never try to lift or lower only 1 platform.	Do not change, tamper or interfere with the safety mechanisms of this lift.	Ensure that the lifting weight of the vehicle is balanced on both platforms to avoid tilting or sliding.	
				
Always keep the lifts pit clean and clear of any objects or contaminants.	Please read and study the operation manual carefully before operating this lift.	Keep the vehicle parallel with the platform lifts at all times.	High voltage in control box, take extreme caution here.	

1.5 Sound Level

The sound emitted from the hoist should not exceed 75DB. For the sake of your health, we suggest putting a noise detector in your working area.

1.6 Training

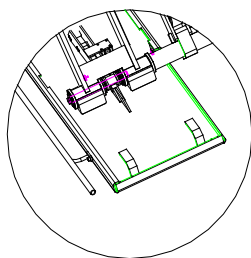
Only properly trained people are allowed to operate the hoist.

2. Overview of the hoist

2.1 General descriptions

The hoist is driven by an electro-hydraulic system. The gear pump delivers hydraulic oil to oil cylinders and pushes upwards their pistons to raise the platforms. For this model, we offer two safety solutions: one with anti-surge valve in hydraulic system to prevent sudden drop down of platform in case of oil hose failure, the other with anti-surge valve and an extra pneumatic safety lock.

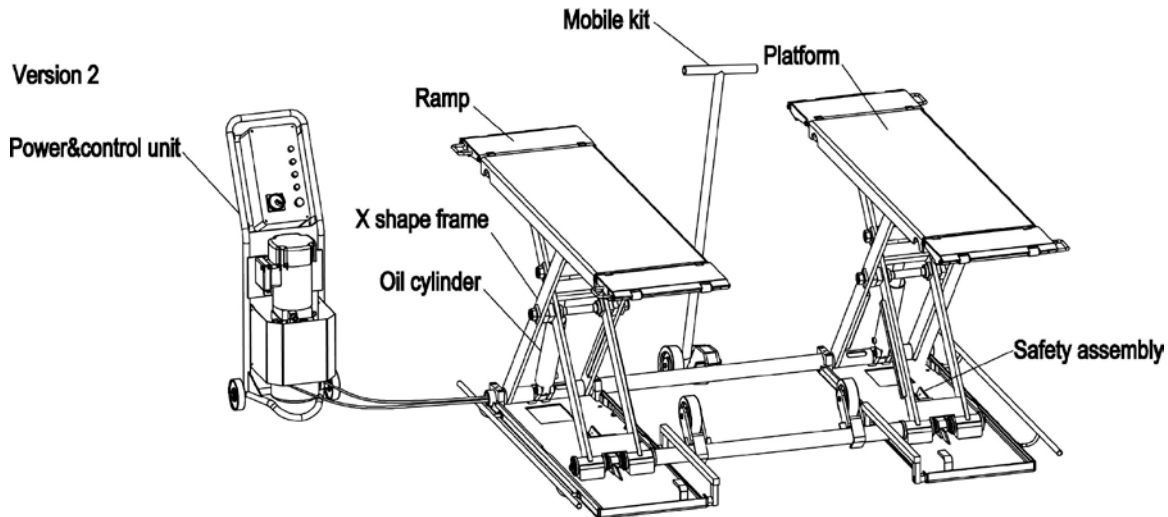
Pneumatic safety lock.



2.2 Technical data

Model	Lifting capacity	Lifting time	Lifting height	Power supply
AL-8803	3000KG	30S	1000mm	240V, single phase, 50Hz, 15Amp

2.3 Construction of the hoist



3. Installation instructions

3.1 Preparations before installation

3.1.1 Tools and equipments needed

- √ Electrical drill
- √ Open wrenches
- √ Screw drivers
- √ Adjustable spanners

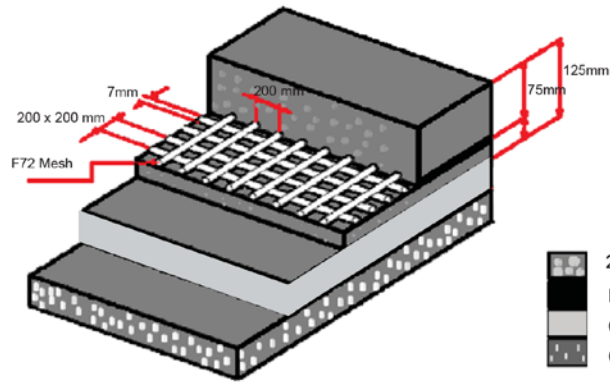


3.1.2 List for parts checking ---Annex 1 (Packing list)

Unfold the package and check if any parts missed as per Annex 1. Do not hesitate to contact us in case any parts missed, but if you do not contact us and insist installing upon the lack of some parts, Advance AutoQuip or distributors will not bear any responsibility for this and will charge for any parts subsequently demanded by the buyer.

3.1.3 Ground conditions

The hoist should be fixed on a smooth and solid concrete ground with its strength more than 3000psi, tolerance of flatness less than 5mm and minimum thickness of 125mm. In addition, newly built concrete ground must undergo more than 28days' cure and reinforcement.



FOUNDATION DIMENSIONS IN MM			QUALITY OF CONCRETE	MIN. PRESSURE RESISTANCE OF SURFACE	MAX. REACTION ON EACH BEARING POINT
Length	Width	Thickness	25MPA	425 Kg/cm ²	0.9 Kg/cm ²
5000	4000	125			

- 25MPA REINFORCED CONCRETE
- F72 REINFORCED MESH
- COMPACTED SOIL
- GRAVEL SHEETING

3.2 Precautions for installation

- 3.2.2 Joints of oil hose must be firmly connected in order to avoid leakage.
- 3.2.3 All bolts should be tightened before use.
- 3.2.4 Do not place any vehicle on the hoist during the installation procedure.

3.3 Installation

Step 1: Remove the packaging and take the mechanical and hydraulic assembly to the designated installing place. Please do read and understand this manual thoroughly before next step.

Step 2: Connect the oil hose to the pump assembly with a proper wrench. (Make sure the hose end is clean).



Step3: Connect the wires of limit switch to the wiring terminals in the control box. Make sure to connect NO.1 wire with NO.1 terminal, NO.2 wire with NO.2 terminal and so forth.

Step4: Link the air hose to compressed air source. (This step is only for the type with pneumatic safety lock)



Step 5: Fix the base frame. (Optional)

This AL-8803 is portable. In other words users may use it without having it placed and fixed on the ground. Nevertheless, we recommend the hoist be fixed on a smooth, level concrete surface. Please see concrete requirements in this manual.

Step 6: Trial testing with load. (Do not use cars for trial testing)

Load limit shall not exceed 3000KG.

This step is of particular importance to check if the oil hose and air hose are well connected. Connections are correct when there is no abnormal sound or leakage after having been tested for 2 or 3 times.

3.4 Items to be checked after installation

S/N	Check items	YES	NO
1	Are two platforms on the same level?		
2	Are oil hoses well connected?		
3	Are electrical connections correct?		
4	Any valves on the pump assembly leak?		

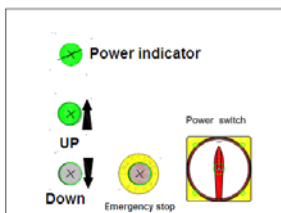
4. Operation instructions

4.1 Precautions

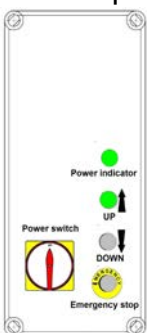
- 4.1.1 Check all the joints of oil hose. Only when there is no leakage, the hoist can be operated.
- 4.1.2 Do not use the hoist if its safety device malfunctions.
- 4.1.3 The machine shall not lift or lower vehicles if the center of gravity is not positioned evenly on the platforms.
- 4.1.4 Operators and other personnel concerned should stand clear during lifting and lowering process.
- 4.1.5 When the lift is raised the desired height, switch off the power to prevent any unauthorised operation.
- 4.1.6. Make sure the safety lock of the hoist is engaged prior to working under or around the vehicle .

4.2 Descriptions of control box

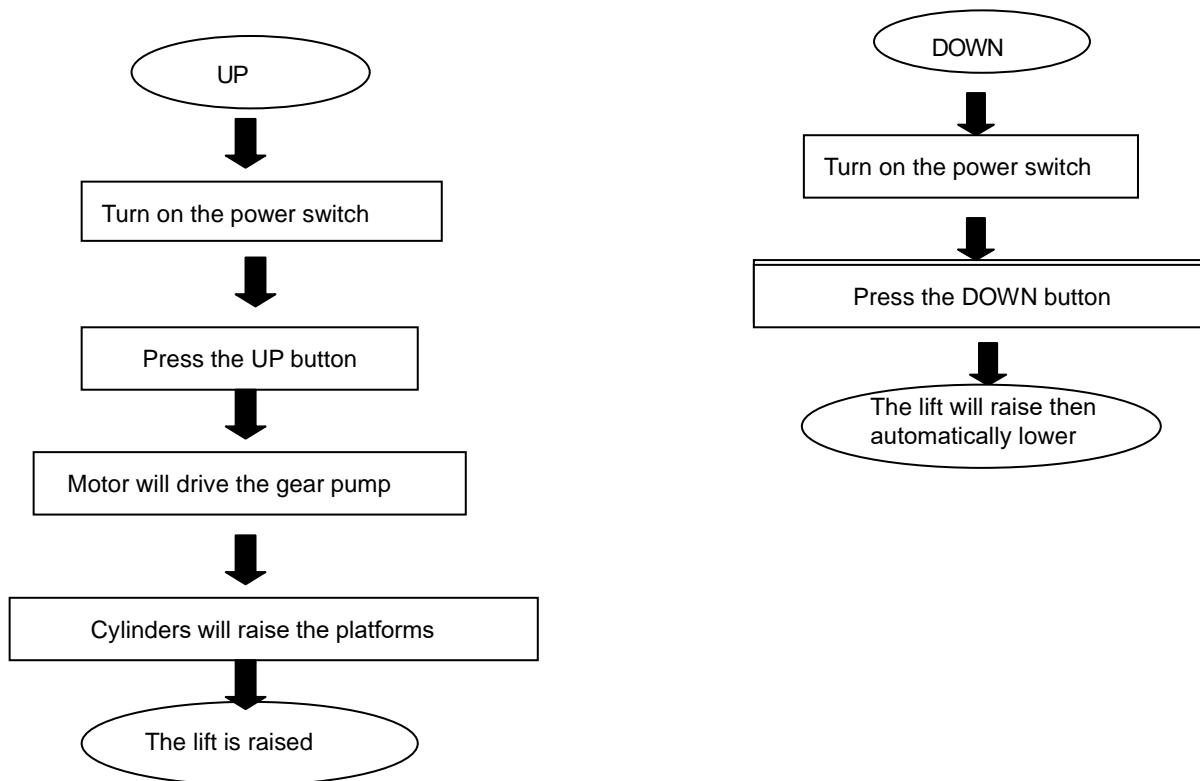
Control panel for version 1



Control panel for version 2



4.3 Flow chart for operation



4.4 Operation instructions

Raise the hoist

1. Make sure that you have read and understood the operation manual before operation.
2. Drive and park the vehicle evenly on two platforms.
3. Place the four rubber pads under the jacking points of the vehicle as per the car manufacturers recommendations.
4. Press and hold the UP button on the control box until rubber pads have touched the underside of the vehicle.
5. Press the UP button to approx. 500mm or until the vehicle wheels leave the ground. Check that the rubber blocks are positioned correctly under the vehicle.
6. Continue to raise the vehicle to the desired height, make sure the safety locks are correctly engaged. Turn off the "Emergency stop" button.

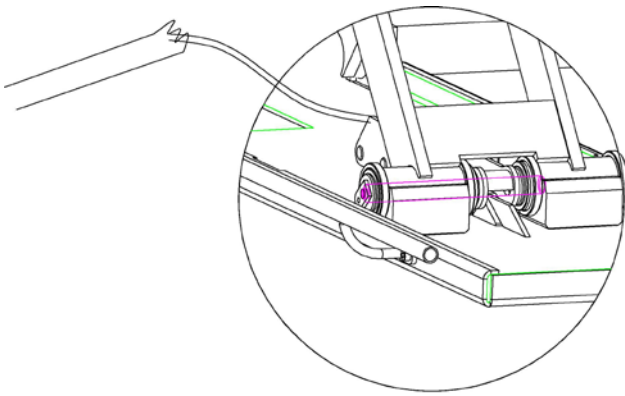
Lower the hoist

1. Switch on (press the "emergency stop button" until the power indicator is on).
2. Press the DOWN button to lower the hoist. Note: the hoist will automatically raise to release the locks, then will lower.
3. When the hoist has been lowered to its lowest position, remove the rubber blocks and if necessary fold down the run up ramps.

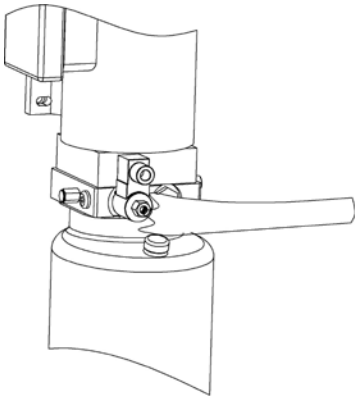
4.5 Emergency lowering in case of no power

The safety lock is not engaged :

- a. Tie back the safety mechanism with means of a cable tie or similar.

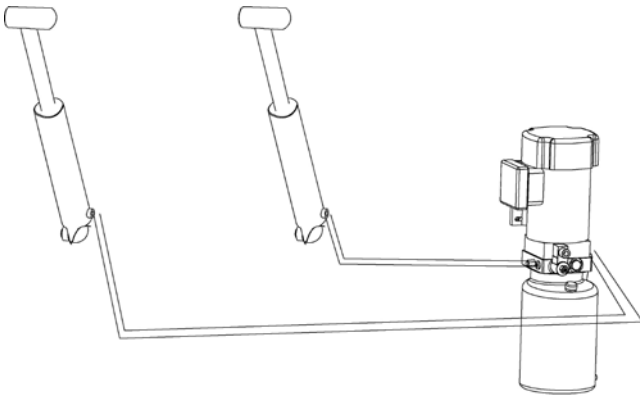


b. Having the safety mechanism unlocked, manually open the electro-magnetic unloading valve on the pump assembly.

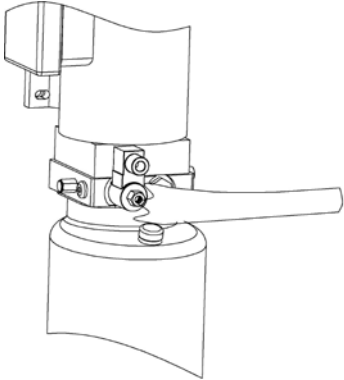
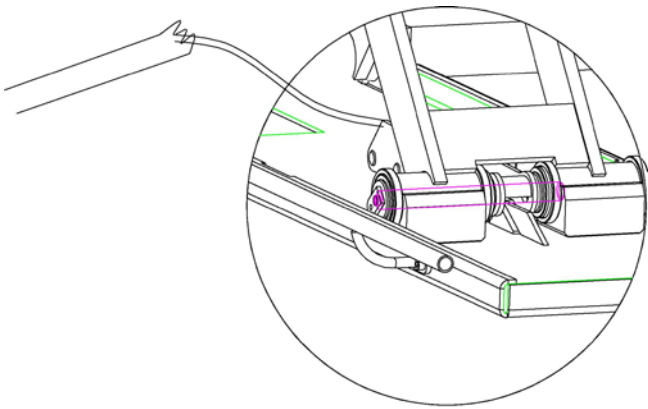
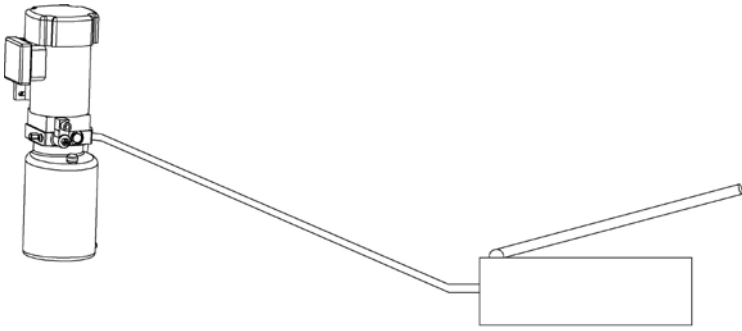


The safety lock is engaged:

a. Screw off the fitting (opposite to the oil out-let) to connect a hand pump. (Optional)



b. Connect the hydraulic assembly with the optional hand pump. Pump the hand pump to raise the platforms. Release the unloading valve on the pump assembly until the hoist has reached its lowest position. Note: reset the lowering valve on the hydraulic pump and remove the cable ties on the locks. Refer to pictures below.



5. Trouble Shooting

ATTENTION: If a issue occurs, please do not hesitate to Advance AutoQuip, distributor or service agent. Please provide as much details as possible ie. pictures / photos etc.

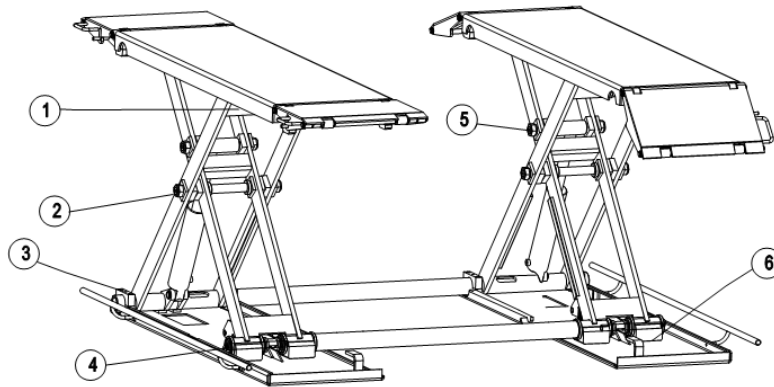
TROUBLES	CAUSE	SOLUTION
Motor does not run and will not raise	Check power connection.	Check and make a good connection.
	The motor is burnt	Replace it.
	The limit switch is damaged or the wire connection is loose.	Connect it or adjust or replace the limit switch.
Motor runs but will not raise	The motor run reversely.	Check the wire connection.
	Overflow valve is loose or jammed.	Clean or adjust it.
	The gear pump is damaged.	Replace it.
	Oil level is too low.	Add oil.
	The oil hose became loose.	Tighten it.
	The check valve is faulty.	Clean or replace it.
Platforms creeping down slowly after being raised	The oil hose leaks.	Check or replace it.
	The oil cylinder seal is leaking.	Replace the seal.
	The valve leaks.	Clean or replace it.
	The overflow valve leaks.	Clean or replace it.
	Electrical unloading valve leaks.	Clean or replace it.
Raising too slow	The pickup oil filter is blocked.	Clean or replace it.
	Oil level is too low.	Add oil.
	The pressure valve is not adjusted to the right position.	Adjust it.
	The hydraulic oil is too hot (above 45°).	Change the oil.
	The seal on the cylinder is worn.	Replace the seal.
Lowering too slow	The throttle valve is blocked.	Clean or replace.
	The hydraulic oil is dirty.	Change the oil.
	The anti-surge valve is blocked.	Clean it.
	The oil hose is faulty.	Replace it.

6. Maintenance

Routine maintenance can ensure the hoist remains in good working order. The below are requirements for routine maintenance. Routine maintenance is required according to the manufacturers recommendations, and also the Australian Standards requirements. Please consult your current OH&S Regulations act.

THE FOLLOWING PARTS NEED TO BE LUBRICATED

S/N	Description
1	Small idler wheel
2	Rotor shaft
3	U-shape block
4	Safety shaft
5	Rotor shaft of oil tank
6	Slider



6.1. Daily checking items before operation

The user must perform daily checks. Daily checks of the safety lock system is very important – if defective or damaged parts are discovered do not use the equipment.

- Before operation, check the safety lock for correct engagement. A simultaneous clicking sound should be heard.
- Check for oil or air leaks.
- Check the electrical system for loose or broken wires.
- Check whether that anchor bolts are firmly screwed.
- Check safety lock mechanism.

6.2. Weekly checking items

- Check the flexibility of moving parts.
- Check the working conditions of safety parts.
- Check the amount of oil left in the oil tank. Oil is enough if the platforms can be raised to highest position. Otherwise, oil is insufficient.
- Check whether all bolts are firmly screwed.

6.3. Monthly checking items

- Check whether all bolts firmly screwed.
- Check the hydraulic system for leaks.

6.4. Yearly checking items

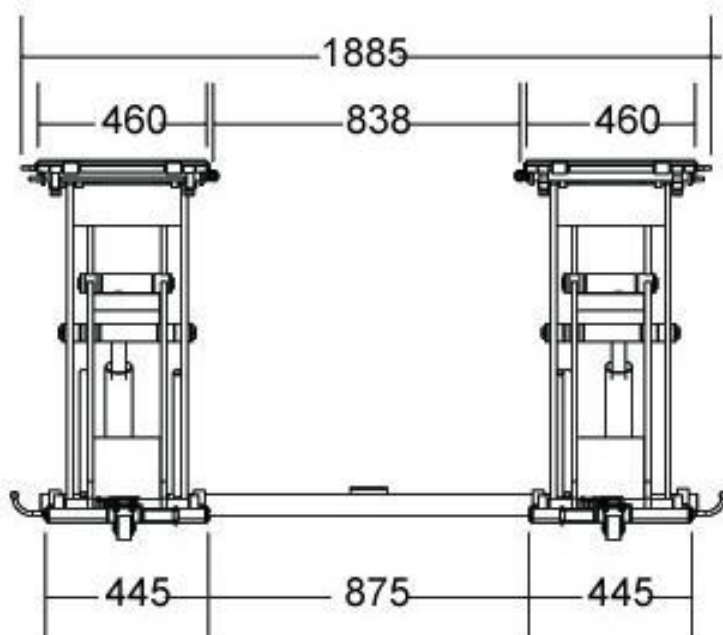
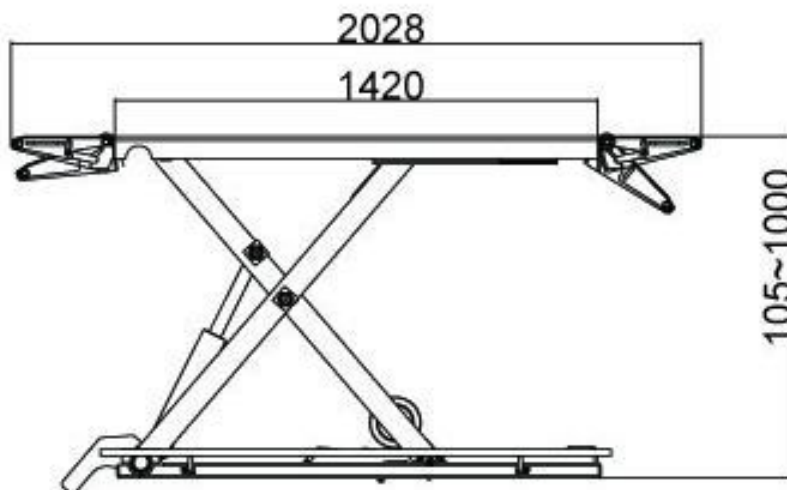
- Empty the oil tank and replace with new hydraulic oil.
- Wash and clean the pump pickup filter.

7. ANNEX

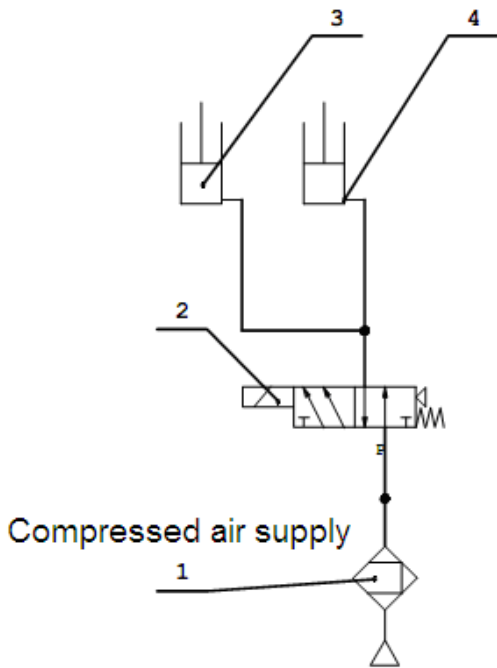
Annex 1, Packing List of the whole hoist

S/N	Name	Drawing #/Spec.	Qty
1	AL-8803 Mechanical Assembly	AL-8803-000	1
2	Mobile kit		Optional
2.1	Wheel	AL-8803-A25-B1	2
2.2	Prop trough	AL-8803-A25-B2	1
2.3	All directional wheel	AL-8803-A25-B3	1
3	Feet protector	AL-8803-A1-B7	2
4	Hydraulic system	AL-8803-A24	1
5	Inside hex screw	M8*12	4

Annex2, Overall diagram

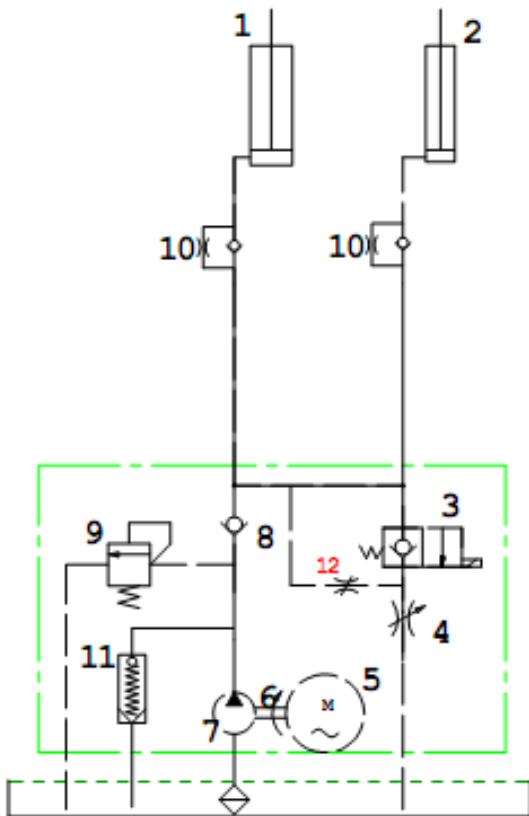


Annex3, Diagram for pneumatic system. (Only applicable to the version with pneumatic release mechanical lock)



1. Air filter
2. Pneumatic solenoid valve
3. Pneumatic cylinder for the main platform
4. Pneumatic cylinder for the assistant platform

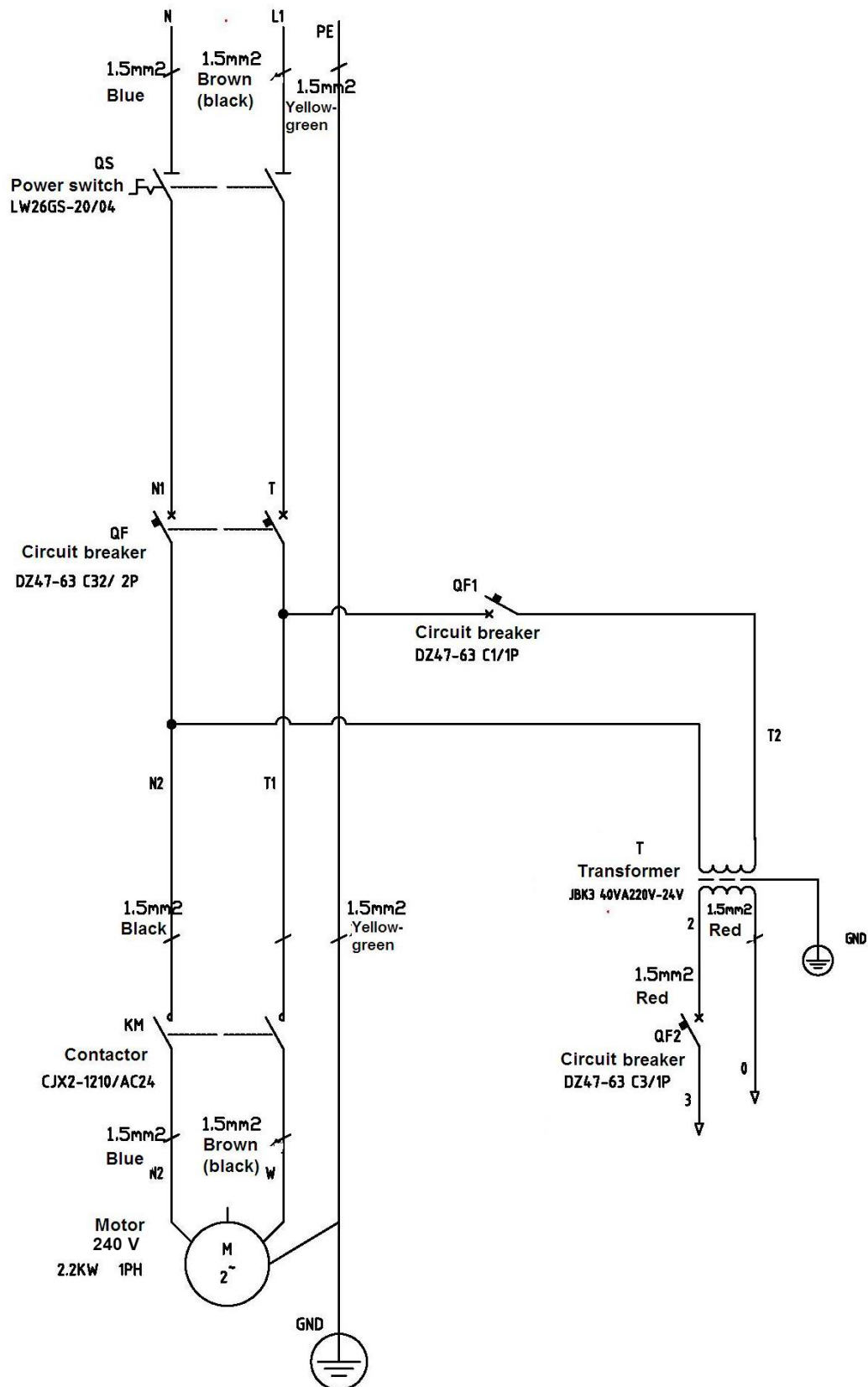
Annex 4, Hydraulic working system



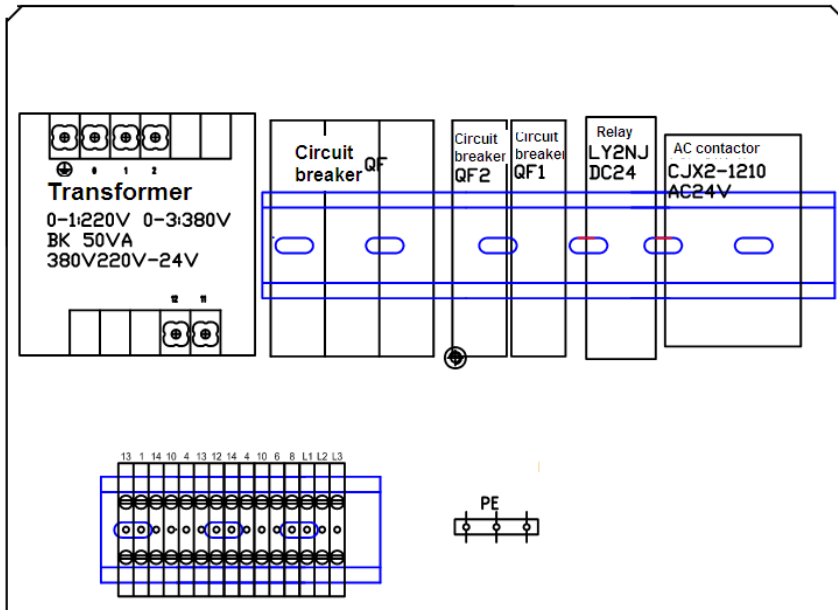
1. Driving cylinder
2. Assistant cylinder
3. Electrical release valve
4. Lowering throttle valve
5. Motor
6. Coupling
7. Gear pump
8. One-way valve
9. Over-riding valve
10. Anti-surge valve
11. Cushion valve
12. Emergent unloading valve

Annex5, Wiring diagram

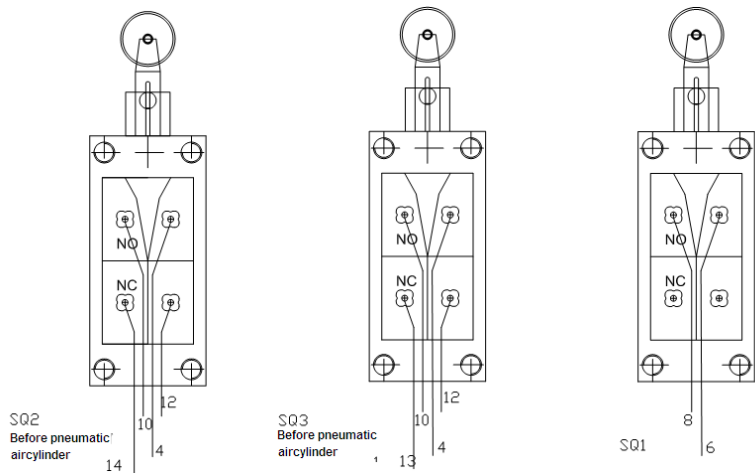
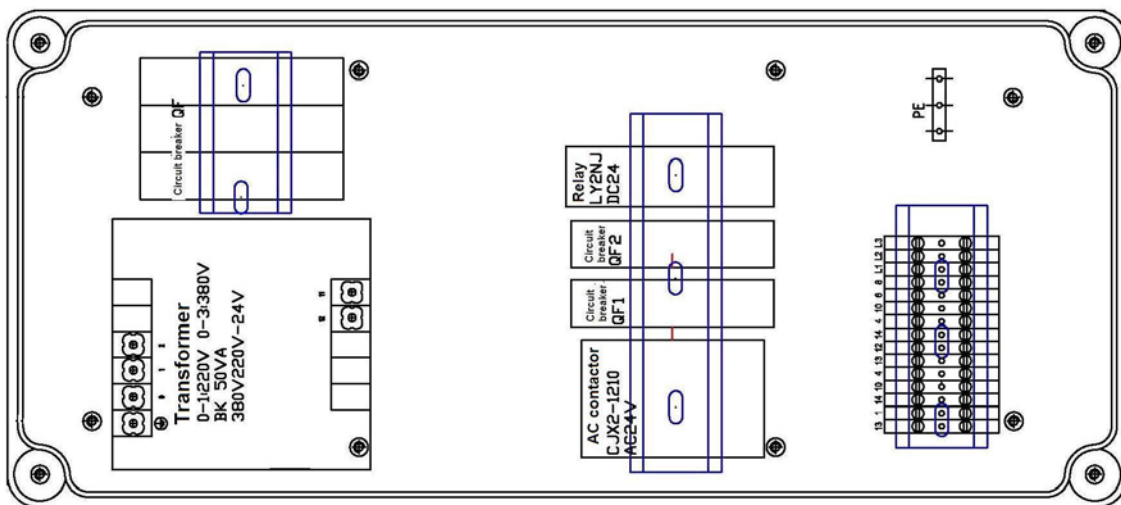
Wiring diagram for electrical system with common transformer
Single phase



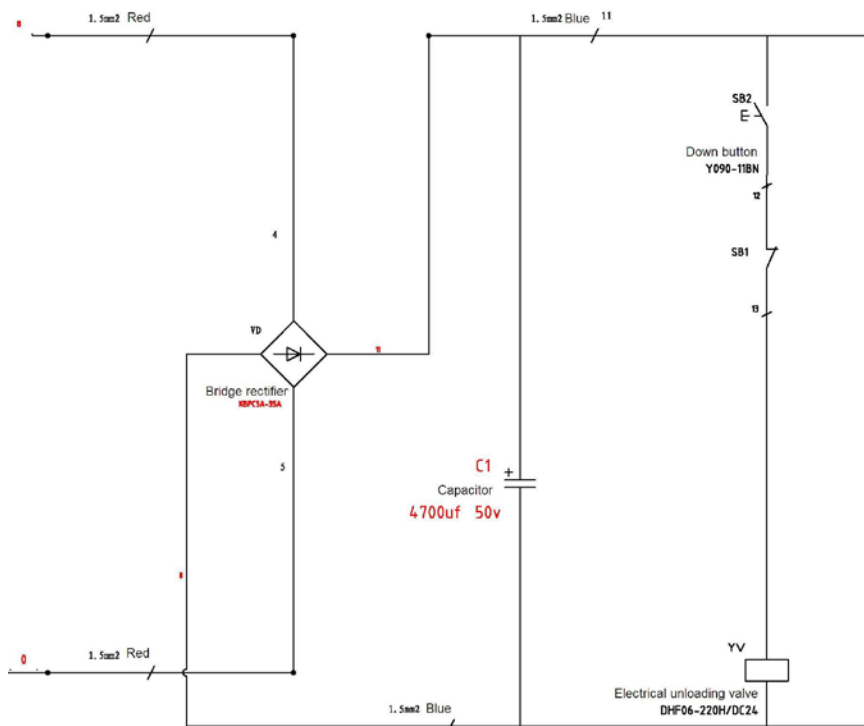
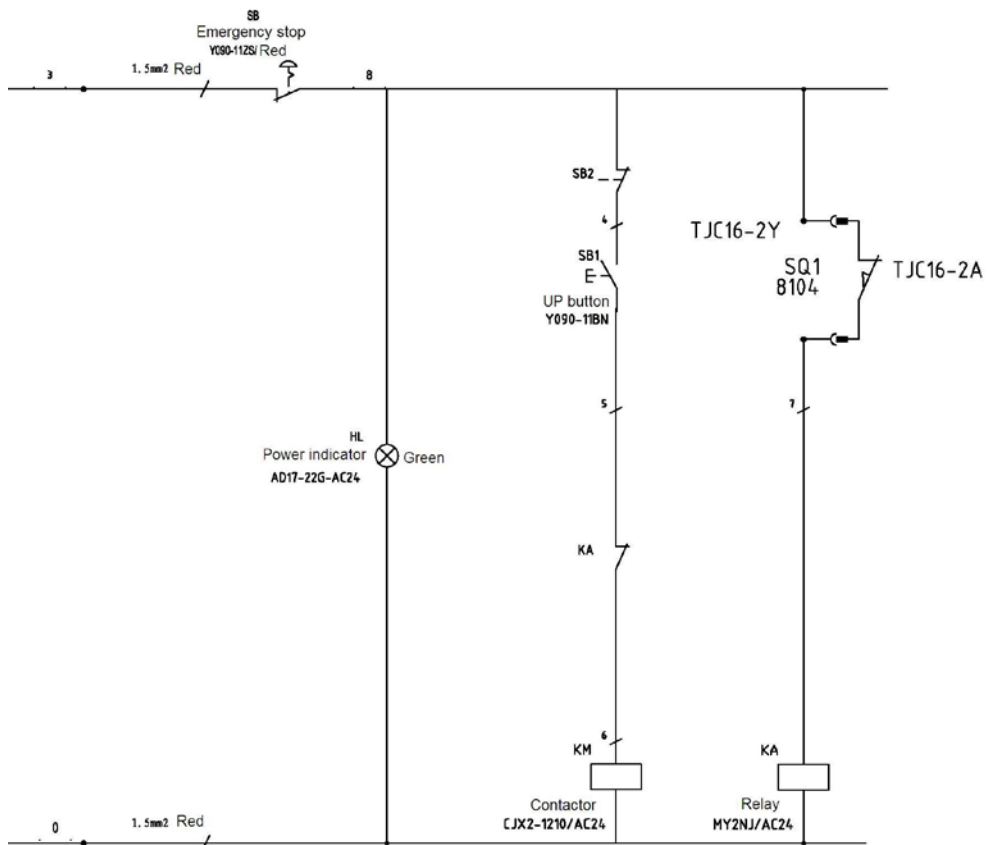
Inside layout of control box for version 1



Inside layout of control box for version 2

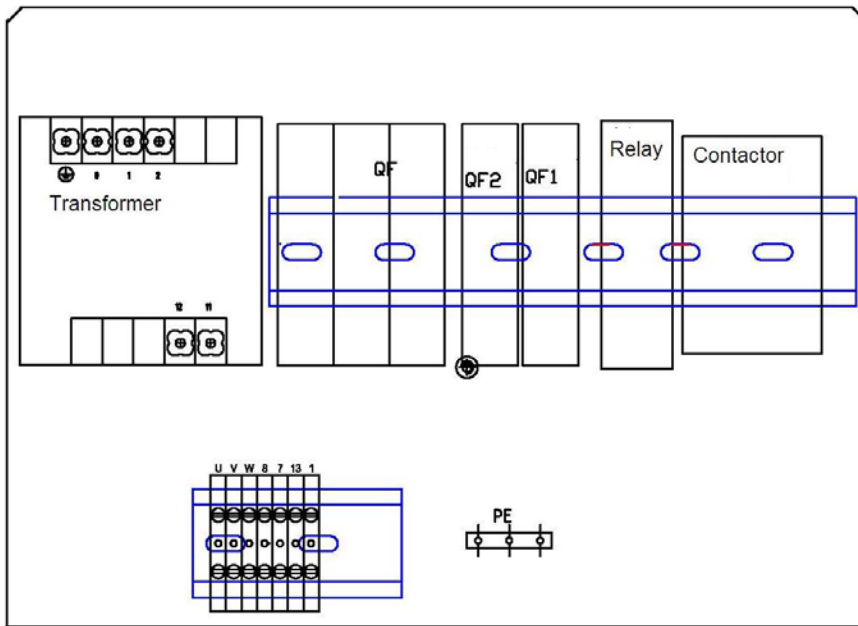


The above wiring diagram is applicable to the version with mechanical safety lock.

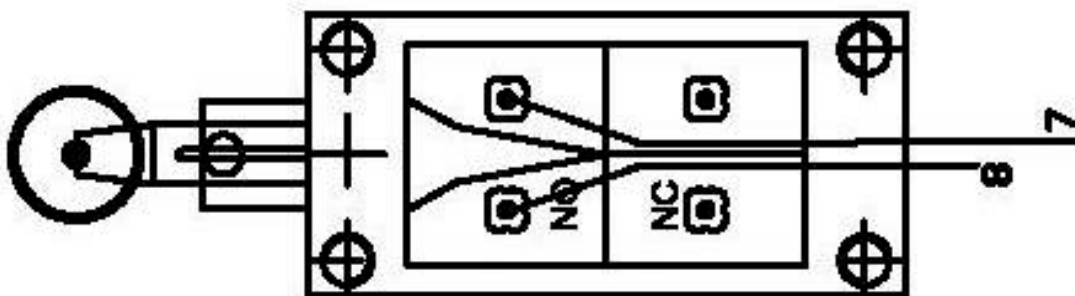
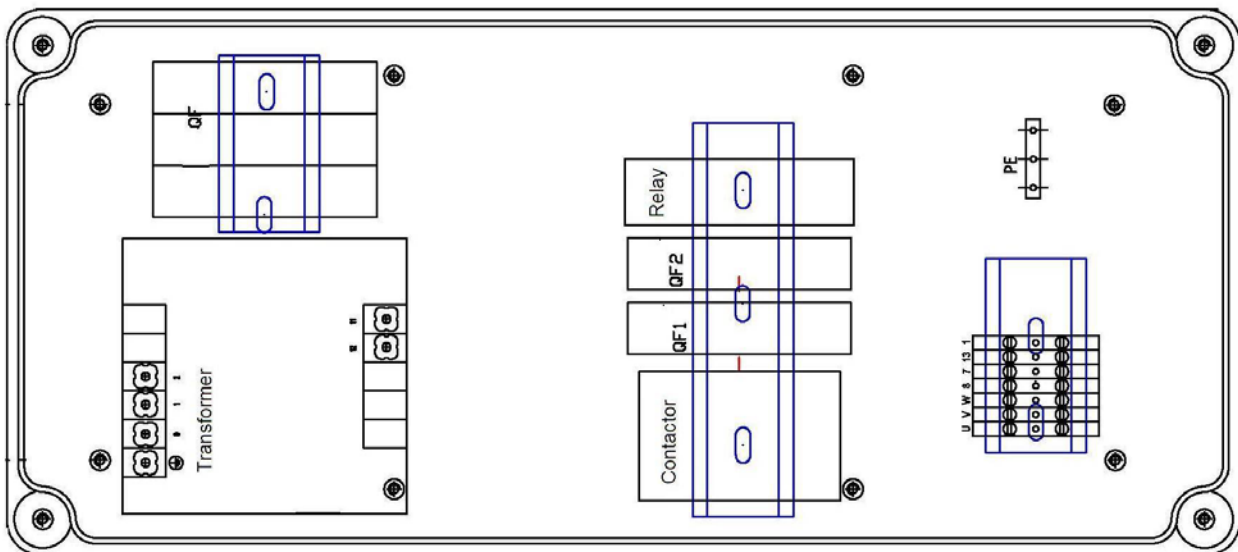


The above wiring diagram is applicable to the version without mechanical safety lock.

Inside layout of control box for version 1 (without mechanical safety lock)



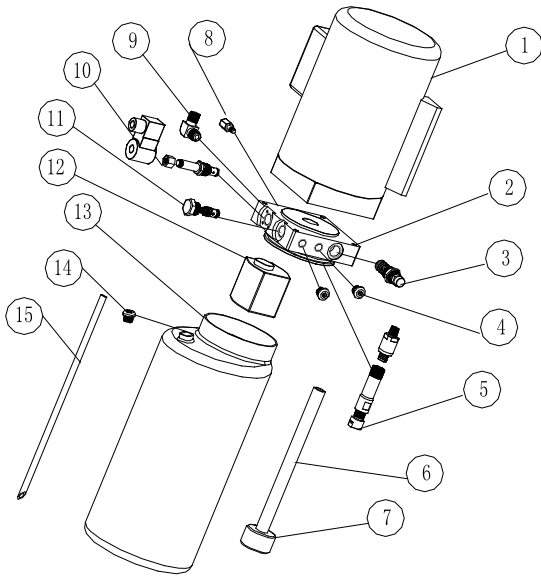
Inside layout of control box for version 2 (without mechanical safety lock)



The above wiring diagram is applicable to the version without mechanical safety lock.

Annex 6. Separate diagrams for the hoist

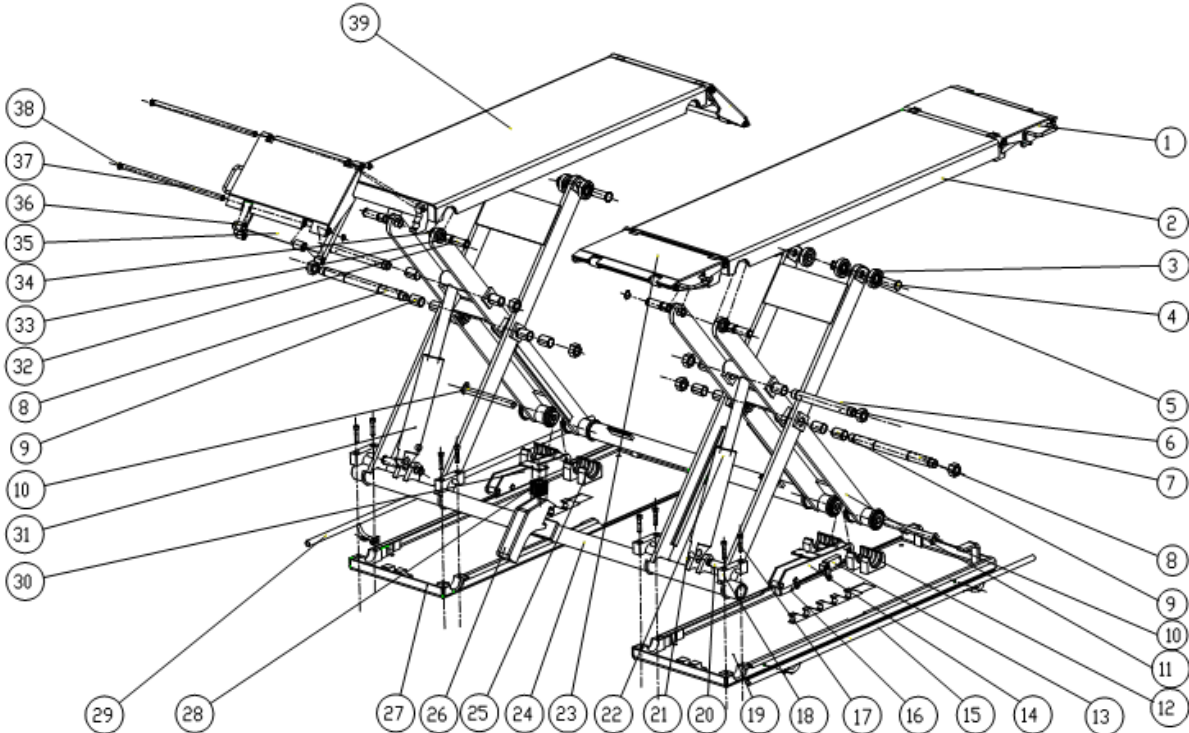
For the pump:



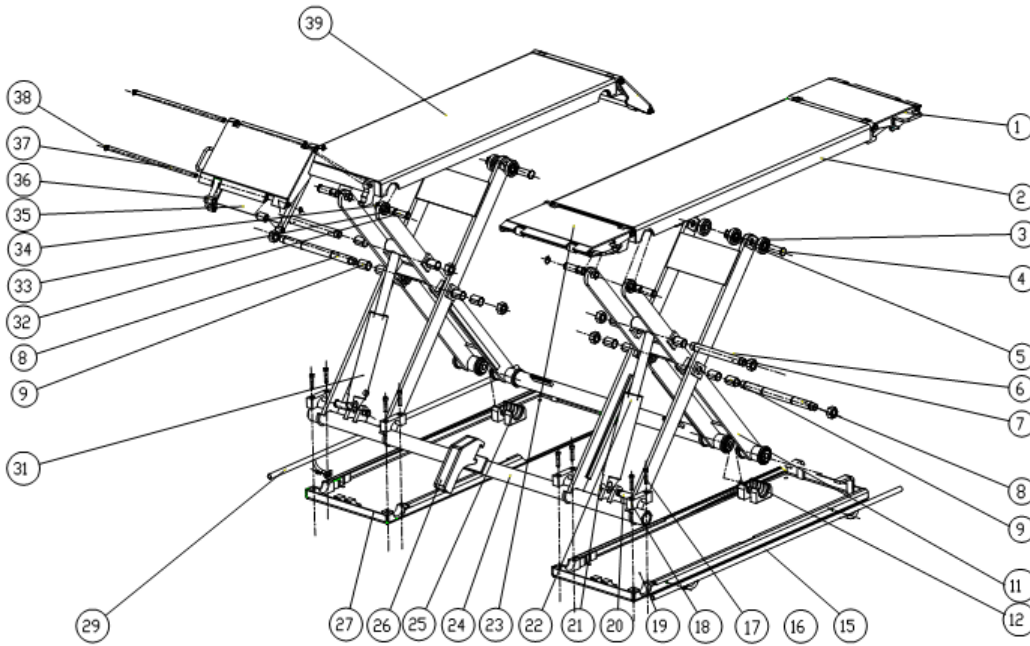
S/N	DESCRIPTION	QTY
1	MOTOR	1
2	HYDRAULIC BLOCK	1
3	OVERFLOW VALVE	1
4	FITTING	2
5	CUSHION VALVE	1
6	ABSORBING OIL PIPE	1
7	OIL FILTER	1
8	THROTTLE VALVE	1
9	OIL HOSE TIE-IN	1
10	ELECTRICAL UNLOADING VALVE	1
11	SINGLE-WAY VALVE	1
12	GEAR PUMP	1
13	OIL TANK	1
14	OIL TANK COVER	1
15	OIL BACK PIPE	1

For the hoist

Version with pneumatic safety lock



Version without pneumatic safety lock



S/N	Material No.	Name	Drawing #/Spec.	Qty	Note
1		Ramp assembly A	AL-8803-A22	2	
2		Platform assembly B	AL-8803-A20	1	
3		Small idler wheel	AL-8803-A8	4	
4		Shaft	AL-8803-A9	2	
5		Circlip for the shaft	D25	4	
6		Swing shaft	AL-8803-A17	2	
7		Self-lock screw	AL-8803-A18/ M27	8	
8		X shape shaft	AL-8803-A7	2	
9		Oilless bearing	3045	12	
10		Security shaft	AL-8803-A5-B14	2	
11		Driving assembly	AL-8803-A5	2	
12		Nylon Slider	AL-8803-A5-B6	2	
13		Limit switch	ME-8108	2	
14		Safety lock holder	AL-8803-A5-B15	1	
15		Feet protector	AL-8803-A1-B7	2	
16		Limit switch	ME-8104	1	
17		Inside hex screw	M10x50	8	
18		U-shape block	AL-8803-A4	8	
19		Right base assembly	AL-8803-A2	1	
20		Fasten shaft for oil tank	AL-8803-A16	2	
21		Elastic flange	D25	4	
22		Oil cylinder(right)	AL-8803-A15-B2	1	
23		Guiding plate B	AL-8803-A23	2	
24		Drive assembly	AL-8803-A3	1	
25		Nylon slider	AL-8803-A5-B6	2	



S/N	Material No.	Name	Drawing #/Spec.	Qty	Note
26		Prop-trough	AL-8803-A25-B2	1	
27		Left base assembly	AL-8803-A1	1	
28		Air tank	CQ2B32x20	2	
29		Feet protector	AL-8803-A1-B7	1	
30		Safety lock holder	AL-8803-A5-B15	1	
31		Oil cylinder (left)	AL-8803-A15-B1	1	
32		Shaft to fasten platforms	AL-8803-A21	4	
33		Oilless bearing	2525	4	
34		Circlip for the shaft	D25	8	
35		Prop assembly	AL-8803-A22-B6	4	
36		Small idler wheel	AL-8803-A22-B5	8	
37		Shaft of guiding plate	AL-8803-A22-B4	8	
38		Elastic flange	D15	16	
39		Platform assembly A	AL-8803-A19	1	

Annex 7.Spare parts list

Spare parts list---electrical system

S/N	Material No.	Name	Spec.	Qty	Unit	Pic.
1		Power switch	LW26GS-20/04	1	Pcs	
2		Button	Y090-11BN	1	Pcs	
3		Power indicator	AD17-22G-AC24	1	Pcs	
4		Transformer	JBK3-40VA380V-24 V JBK3-40VA220V-24 V	1	Pcs	
5		AC contactor	CJX2-1210/AC24	1	Pcs	

S/N	Material No.	Name	Spec.	Qty	Unit	Pic.
6		Circuit breaker	DZ47-63 C16/3P DZ47-63 C32/2P	1	Pcs	
7		Circuit breaker	DZ47-63 C1/1P	1	Pcs	
8		Circuit breaker	DZ47-63 C3 /1P	1	Pcs	
9		Limit switch	YBLX-ME8104	1	Pcs	
10		Limit switch	8108 (TZ8108)	2	Pcs	
11		Emergency stop	Y090-11ZS/red	1	Pcs	
12		Bridge rectifier	KBPC5A-35A	1	Pcs	
13		Capacitor	4700UF/50A	1	Pcs	
14		Relay	LY2NJ/DC24	1	Pcs	

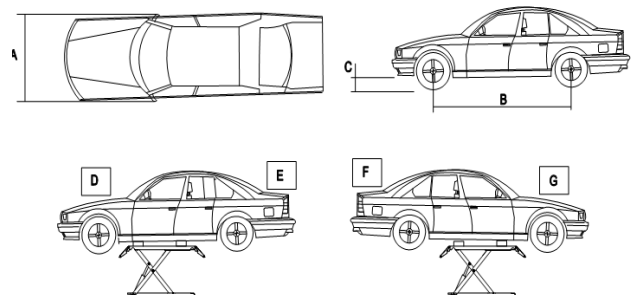
S/N	Material No.	Name	Spec.	Qty	Unit	Pic.
15		Relay holder	PTF-08A-E	1	Pcs	
18		Control box	190*430*135	1	Pcs	

Spare parts list---machine part

S/N	Name	Drawing #/Spec.	Qty	Note
1	Self-lock screw	AL-8803-A18/ M27	8	
2	Security shaft	AL-8803-A5-B14	2	
3	Nylon Slider	AL-8803-A5-B6	2	
4	Limit switch	ME-8108	2	
5	Safety lock holder	AL-8803-A5-B15	1	
6	Feet protector	AL-8803-A1-B7	2	
7	Limit switch	ME-8104	1	
8	U-shape block	AL-8803-A4	8	
9	Oil cylinder (right)	AL-8803-A15-B2	1	
10	Nylon slider	AL-8803-A5-B6	2	
11	Air cylinder	CQ2B32x20	2	
12	Safety lock holder	AL-8803-A5-B15	1	
13	Oil cylinder (left)	AL-8803-A15-B1	1	

Model	A (mm)	B (mm)	C (mm)	D (T)	E (T)	F (T)	G (T)
AL-8803	1600	2000	110	1.8	1.2	1.2	1.8

Annex8 , Size and weight requirements on vehicles



Note: Offers may differ as per different requirements on the version.

3000kg

Scissor **Hoist**

OPERATING INSTRUCTIONS

The hoist should only be operated by personnel that have been thoroughly trained in operation and maintenance of the hoist.

1. Drive the vehicle evenly over the scissor platform and apply the park brake.
2. Install the four rubber lifting blocks to the underside of the jacking points of the hoist.
3. Make sure that all personnel are clear and there are no obstructions around the hoist.

TO RAISE THE **HOIST**

1. Press the “UP” button on the control panel to approximately 500mm above the floor.
2. Check that the vehicle is evenly balanced on the hoist.
3. Continue raising the hoist to the desired working height checking for any obstructions.
4. Once the hoist has reached the desired working height press the lock button until the vehicle has rested on the locks
Important: a visual check is to be made for correct engagement of the locks prior to going under the hoist.

TO LOWER THE **HOIST**

1. Check for any obstructions under the hoist prior to lowering the hoist.
2. Press the “DOWN” button on the control panel until the locks are clear
Please note: the hoist will raise approximately 100mm and then will descend automatically.
3. Once the hoist has reached its lowest position, remove the rubber supporting blocks.
4. Turn the power switch to the off position on the control panel.

MODEL: AL-8803	SERIAL NO.:	APPROVALS: WAH21737
--------------------------	--------------------	-------------------------------

SAFETY OPERATING PROCEDURES

Vehicle Hoist

DO NOT use this machine unless the operator has been thoroughly instructed in its safe use and operation.



Safety glasses must be worn at all times in work areas.



Long and loose hair must be contained.



Sturdy footwear must be worn at all times in work areas.



Close fitting/protective clothing must be worn.



Rings and jewellery must not be worn.



Do not stand on hoist whilst hoist is in operation.

A vehicle hoist must not be operated unless it has a current certificate of inspection.

PRE-OPERATIONAL SAFETY CHECKS

1. Ensure that vehicle hoist has operating and maintenance instructions permanently located and clearly visible.
2. The equipment must be used in accordance with manufacturer's instructions.
3. Check the capacity of the hoist compared to the weight of the vehicle. If vehicle is too heavy, do not proceed.
4. Ensure the area is clean and clear of grease, oil, and objects that may be a slip/trip hazard.
5. Familiarise yourself with and check all machine operations and controls.
6. Check all safety devices are in good condition.
7. Ensure support arms are capable of being locked in position.
8. Ensure rubber pads are in good condition on all load points.
9. Faulty equipment must not be used. Immediately report suspect equipment.

OPERATIONAL SAFETY CHECKS

1. Centre vehicle on hoist, ensuring that the weight is evenly distributed to the front and rear.
2. Identify the correct jacking points.
3. Only one person shall operate the hoist at a time.
4. Ensure hoist area is clear of people and equipment before operating.
5. Never leave the hoist running unattended.
6. Check vehicle stability by looking at the jacking points.
7. Engage and check for the correct engagement of the locks.
8. At the completion of work lower the vehicle hoist and ensure all equipment is left in a safe position.

HOUSEKEEPING

1. Switch off equipment.
2. Leave the equipment and work area in a safe, clean and tidy state.

POTENTIAL HAZARDS

■ Falling objects ■ Trapping hazards ■ Crushing hazards ■ Entanglement hazards

This Safety Operating Procedure does not necessarily cover all possible hazards associated with the machine and should be used in conjunction with other references. It is designed to be used as an adjunct to the operation in the safety procedures and to act as a reminder to the operator prior to machine use.



ADVANCE AUTOQUIP WARRANTY

GENERAL WARRANTY INFORMATION:

ADVANCE AUTOQUIP'S OBLIGATION UNDER THIS WARRANTY IS LIMITED TO REPAIRING OR REPLACING ANY PART OR PARTS RETURNED TO THIS FACTORY, TRANSPORTATION CHARGES PREPAID, WHICH PROVE UPON INSPECTION TO BE DEFECTIVE AND WHICH HAVE NOT BEEN MISUSED. DAMAGE OR FAILURE TO ANY PART DUE TO FREIGHT DAMAGE OR LACK OF MAINTENANCE IS NOT COVERED UNDER THIS WARRANTY. ADVANCE AUTOQUIP RESERVES THE RIGHT TO DECLINE RESPONSIBILITY WHEN REPAIRS HAVE BEEN MADE OR ATTEMPTED BY OTHERS, OR WHERE NON GENUINE PARTS HAVE BEEN USED. THIS WARRANTY DOES NOT COVER DOWNTIME EXPENSES INCURRED WHEN UNIT IS IN REPAIR. ADVANCE AUTOQUIP ARE NOT LIABLE FOR POSSIBLE ISSUES, DAMAGES, ACCIDENTS ETC RESULTING FROM FAILURE TO FOLLOW THE OPERATION OR INSTALLATION INSTRUCTIONS CONTAINED IN THE MANUAL OR ON THE EQUIPMENT. THE MODEL NAME AND SERIAL NUMBER OF THE EQUIPMENT MUST BE PROVIDED WITH ALL WARRANTY CLAIMS. THIS WARRANTY STATEMENT CONTAINS THE ENTIRE AGREEMENT BETWEEN ADVANCE AUTOQUIP AND THE PURCHASER UNLESS OTHERWISE SPECIFICALLY EXPRESSED IN WRITING. THIS NON-TRANSFERABLE WARRANTY APPLIES TO THE ORIGINAL PURCHASER ONLY. THIS WARRANTY IS APPLICABLE TO UNITS LOCATED ONLY IN AUSTRALIA. CONTACT ADVANCE AUTOQUIP FOR SPECIFIC WARRANTY PROVISIONS FOR UNITS LOCATED OUTSIDE OF THESE COUNTRIES.

NOTE: THE EQUIPMENT IS NOT TO BE USED FOR WASH DOWN PURPOSES OR TO BE INSTALLED IN AN OUTDOOR ENVIRONMENT WHERE IT IS SUBJECT TO WEATHER OR WATER DAMAGE. WARRANTY WILL BE IMMEDIATELY VOID.

STRUCTURAL COMPONENTS:

ALL STRUCTURAL AND MECHANICAL COMPONENTS OF THIS UNIT ARE GUARANTEED FOR A PERIOD OF FIVE YEARS, FROM THE DATE OF INVOICE, AGAINST DEFECTS IN WORKMANSHIP AND/OR MATERIALS WHEN LIFT IS INSTALLED AND USED ACCORDING TO RECOMMENDATIONS.

POWER UNIT:

POWER UNIT COMPONENTS (PUMP AND RESERVOIR) ARE GUARANTEED A PERIOD OF ONE YEAR, FROM THE DATE OF INVOICE, AGAINST DEFECTS IN WORKMANSHIP AND/OR MATERIALS WHEN THE LIFT IS INSTALLED AND USED ACCORDING TO RECOMMENDATIONS.

ELECTRICAL COMPONENTS:

ALL ELECTRICAL COMPONENTS (INCLUDING MOTOR) ARE GUARANTEED A PERIOD OF ONE YEAR FOR PARTS ONLY (EXCLUDING LABOR), FROM THE DATE OF INVOICE, AGAINST DEFECTS IN WORKMANSHIP AND/OR MATERIALS WHEN THE LIFT IS INSTALLED AND USED ACCORDING TO RECOMMENDATIONS.

PNEUMATIC (AIR) COMPONENTS:

ALL PNEUMATIC (AIR) COMPONENTS (I.E. AIR CYLINDERS AND POPPET AIR VALVES) ARE GUARANTEED FOR ONE YEAR FOR PARTS ONLY (EXCLUDING LABOR), FROM THE DATE OF INVOICE, AGAINST DEFECTS IN WORKMANSHIP AND/OR MATERIALS WHEN THE LIFT IS INSTALLED AND USED ACCORDING TO RECOMMENDATIONS.

EXCLUSIONS:

WARRANTY DOES NOT INCLUDE CONSUMABLE ITEMS SUCH AS HYDRAULIC OIL, LIFTING PADS, OIL SEALS, VEE BELTS AND SLIDING BLOCKS.


THIS WARRANTY SUPERSEDES ALL OTHER WARRANTY POLICIES PREVIOUSLY STATED AND IN ALL OTHER ADVANCE AUTOQUIP'S PRODUCT SPECIFIC LITERATURE.

Advance AutoQuip

2 McDonald Crescent | Bassendean WA 6054

Ph: 08 9279 1663 | Fax: 08 9279 1667 | E: sales@aaq.net.au | W: www.aaq.net.au

COMMISSIONING REPORT

1. Details of Customer	 <p>2 McDonald Crescent Bassendean WA 6054 P: 08 9279 1663 E: sales@aaq.net.au</p>			
Customer Name:				
Installation Address:				
2. Hoist Details				
Model No:				
Hoist Type:				
Installation Date:				
3. Commissioning Report	Yes	No	N/A	Comments
Safety Devices				
Safety devices incorporated into the design of the vehicle to AS/NZS 1418.9				
Welds				
Visual check all welds completed and comply to requirement of AS/NZS 1554				
Hydraulic Equipment and Controls				
Visual check carried out for leaks				
Pneumatic Equipment and Controls				
Visual check carried out for leaks				
Safety Locks				
Safety locks tested for correct operation				
Support Pads				
Checked for good working order				
Wheel Stops				
Supplied with the hoist and in good working order				
Hoist Motion Limits				
Checked for correct operation				
Load Test and Speed Check				
Hoist checked with load for correct operation and speed control tested				
Wire Ropes				
Checked wire ropes for correct installation and tension				
Concrete Floor				
Concrete floor is a suitable depth for installation				

COMMISSIONING REPORT

Location of Vehicle Hoist & Vehicle Clearances			
Vehicle hoist or any part of the load is positioned no less than 600mm away from any fixed structure			
Provisions have been made for effective clearances above the vehicle when the hoist is in its fully raised position.			
Markings - Hoist Checked for Relevant Marking Including:			
Make & Model Number			
Serial number			
Rated Capacity			
Reference to maintenance			
Operation instructions			
Screw and Nut Gaps			
Hoist compliance plate showing design registration			
Functional Test			
Vehicle hoist has been tested and all safety devices, limit switches and control function interlocks have been tested for correct operation.			
Demonstration			
The installer has demonstrated the operation of the vehicle hoist to the owner or operator			
Electrical Equipment and Controls			
Lock off isolating switch installed			
Emergency stop button installed			
3. Details of Electrical Contractor			
Trading Name:	EC Licence Number:		
Address:	Telephone Number:		
4. Signature			
	Name:		
	Date:		
I, being the person responsible for completing the commissioning report have exercised reasonable skill and competency when completing the report and hereby certify that the vehicle hoist has been commissioned fit for use as per the Australian / New Zealand Standard 1418.9:1996 Vehicle Hoists.			