



AAQ
A U S T R A L I A

VEHICLE HOISTS & AUTOMOTIVE WORKSHOP EQUIPMENT



SELECTED PRODUCT RANGE | 2024

CONTENTS

MAXIMISE SPACE			
Single Post Hoists	2.7T Single Post Hoist with Ramps	AL-167255	6
Four Post Hoists	3.5T 4 Post Movable Hoist	AL-10000T	7
Car Stackers	4 Post 3 Car Stacker	ACS-2525	8
LIFT TO REPAIR			
Two Post Hoists	3.8T 2 Post Clearfloor Hoist	AL-6214CF	12
	3.8T 2 Post Baseplate Hoist	AL-6254BP	13
	4T 2 Post Clearfloor Hoist	AL-9000CF	14
	4T 2 Post Baseplate Hoist	AL-9000BP	15
	4.5T 2 Post Clearfloor Hoist	AL-9500CF	16
Four Post Hoists	4T 4 Post Hoist	AL-4000	17
Scissor Hoists	2.7T Mid Rise Portable Scissor Hoist	AL-3060	18
	3T Full Rise Above Ground Scissor Hoist	AL-3000AG	19
Motorcycle Hoists	0.5T Air Operated Motorcycle Hoist	AL-243612	20
	1T Electro-hydraulic Motorcycle Hoist	AL-243156	21
TYRE MAINTENANCE			
Wheel Balancers	Wheel Balancer [Car +4WD Tyre]	AS-105024G	24
Tyre Changers	Semi Automatic Tilt Back Tyre Changer	AM-103826	25
WORKSHOP EQUIPMENT			
Must Haves	Under Hoist Stand	AL-201560	28
	70L Oil Drainer	AQ-OIL	28
	Rubber Lift Blocks	RLB	28
Jacks	2T Hoist Jacking Beam	AQ-JACK-2T	29
	3T Hydraulic Low Profile Floor Jack	AQ-FLOORJACK-3T	29
	1T Transmission Jack	AQ-TRANSJACK-1T	29
INSTALLATION, SPARE PARTS AND SERVICING			30
ADDITIONAL PRODUCTS			31

LEVEL UP YOUR WORKSHOP

**Hard working, quality solutions
to vehicle maintenance.**

AAQ Australia enables professionals and enthusiasts, like you, to take vehicle maintenance to the next level.

We solve maintenance challenges with robust, reliable equipment that exceeds Australian industry and safety standards. Since 1995, we've been designing and manufacturing quality equipment solutions for Australian automotive and mechanical workshops.

We understand the importance of a garage that runs safely, smoothly, and efficiently. Our products aren't just tools; they're your hardest workers, ensuring seamless operations.

From large-scale, heavy industrial workshops to home garages, our equipment solutions are the key to levelling up your maintenance capability, comfort and satisfaction, saving time, money, and effort.

We live and breathe workshop life. Every piece of equipment we manufacture is solid, safe, reliable, robust, and stands the test of time. Leading the market with a 5-year structural warranty, fast nationwide delivery and a network of expert installers, we bring solutions straight to you.

We take pride in our work, so you can take pride in yours.



MAXIMISE SPACE

Whether you're looking to free up floor space or increase your vehicle parking capacity, we manufacture solutions to maximise your space and take your garage to the next level.

In configurations that include compact single post, two post, four post, double car width or multi-platform car stackers, we have workshop storage solutions suited to home, SME or large scale commercial and industrial garages.





SINGLE POST HOISTS

2.7T SINGLE POST HOIST WITH RAMPS // AL-167255

Maximise space in your home garage or workshop with a 2.7T Single Post Hoist with drive-on ramps. With a lifting capacity of 2700kg/2.7 tonne and a maximum lift height of 1960mm, this robust, space-saving single post car hoist features a low post height of 2800mm suitable for low-roof height installation.

Available in single phase power

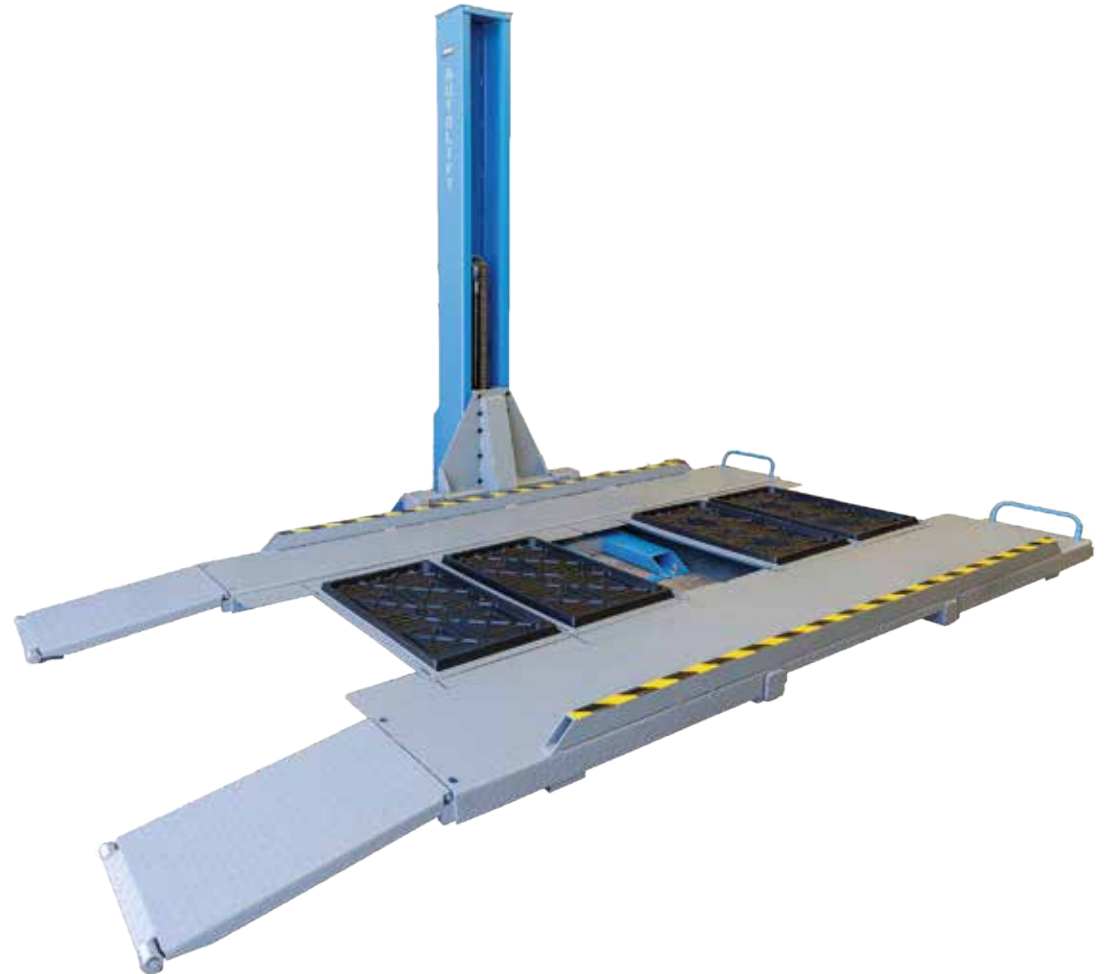
FEATURES

- Versatility to handle most vehicles with 3860mm platforms and 480mm drive on ramps
- Hydraulic power unit for smooth and quiet operation
- Smooth lift experience with single hydraulic cylinder combined with heavy duty lifting chains
- Superior safety locking mechanisms
- Removable drip trays for easy, convenient under-vehicle access
- Space saving design eliminates additional columns taking up space in your garage

MODEL NUMBER: AL-167255-1PH
// 2.7T SINGLE POST FIXED HOIST (240V)



[MORE INFORMATION >>](#)



4 POST HOISTS

3.5T 4 POST MOVABLE HOIST // AL-10000T

AAQ's Movable 4 Post Car Hoist is the right choice to maximise storage and maintain flexibility in your home garage or SME workshop. Robust quality, the AL-10000T has a lifting capacity of 3500kg / 3.5 tonne and a maximum lifting height of 1950mm.

Available in single phase power

FEATURES

- Worksafe design registered
- Heavy duty hydraulic cylinder provides smooth seamless lifting
- Powerful 2.2kw 15amp single phase hydraulic power
- Improved stability with extra large slide blocks
- Safety features include: safety locking ladders, manual lock release, auto-engage secondary safety locks, safety limit switch engaged at maximum height
- Ample space to store most sedans and medium SUVs under the platform with maximum platform lift height of 1950mm
- Easily movable with castor wheels when unloaded

MODEL NUMBER: AL-10000T-1PH // 3.5T 4 POST MOVABLE HOIST (240V)



[MORE INFORMATION >>](#)



MAXIMISE SPACE

CAR STACKERS

4 POST 3 CAR STACKER // ACS-2525

The ACS-2525 3 Car Stacker is designed to conveniently allow you to stack 3 vehicles when limited space is available. With generous headroom between platforms of 2100mm and a total height of 4966mm, this car lift stacker can store a wide range and combination of vehicles.

Simple key switch operation and packed with safety features, this multi-car stacker is ideal for various parking applications, automotive workshops or anywhere extra parking is required.

Available in single or three phase power

FEATURES

- Easy to operate key-operated control box, fitted with an emergency stop button
- Overlap platform design with low maintenance, single hydraulic ram to drive platform lift
- Powerful 3kw hydraulic power unit with low voltage controls for added safety
- Low 150mm drive-on ramp for easy loading of vehicles
- Total lift capacity of 4500kg / 4.5 tonne (2 tonne top level + 2.5 tonne 1st level)
- Key safety features include electronic actuated locks, built in pressure switches to ensure locks engage correctly, lower platform auto-engage safety locks, semi automatic lock release, safety limit switch at maximum height, safety locking ladders (100mm increments), ramp stop plates located on each platform
- Long lasting high-quality powder coated finish
- Extras include removable galvanized trays between each set of platform ramps to prevent vehicle leaks on cars stored below. (Not required to operate lift functionality)

MODEL NUMBER: ACS-2525-1PH // 4 POST 3 CAR STACKER (240V)

MODEL NUMBER: ACS-2525-3PH // 4 POST 3 CAR STACKER (3 PHASE)



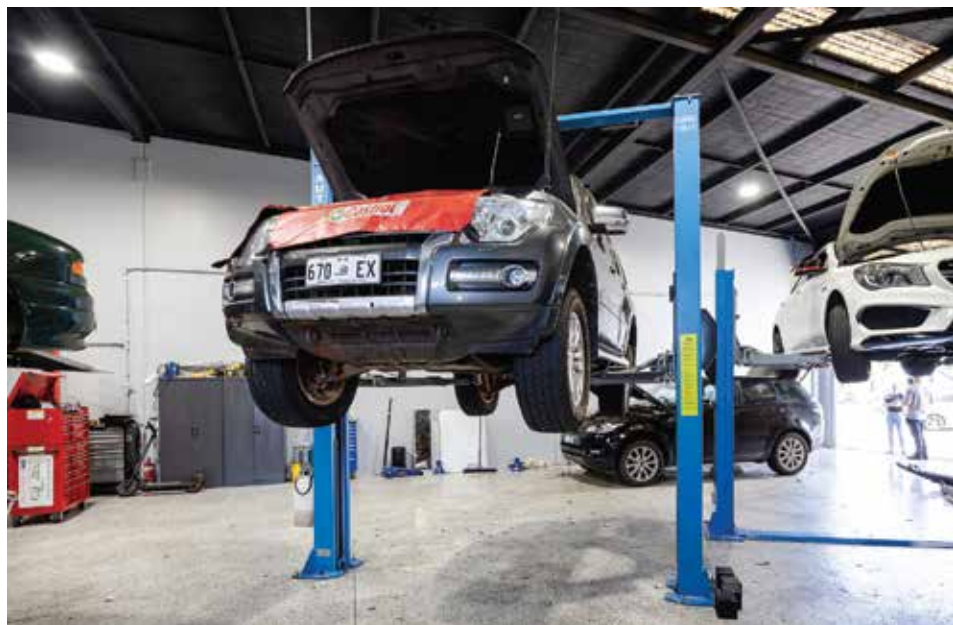
[MORE INFORMATION >>](#)



LIFT TO REPAIR

Level up your inspection, repair and maintenance capability with our hardworking, robust hoists, lift table and scissor lifting solutions. With lift capacities spanning 500kg-6T, we have the portable or fixed, two post, four post, scissor or lift table options to suit every workshop or motorcycle garage.





2 POST HOISTS

3.8T 2 POST CLEAR FLOOR HOIST // AL-6214CF

With a robust, easy to maintain, asymmetrical design the AL-6214CF 3.8T 2 Post Clear Floor Vehicle Hoist is designed for maintenance enthusiasts. With a lift capacity of 3800kg / 3.8 tonne and a total structure height of 3700mm, this car hoist features a clear floor design that makes vehicle maintenance easy, allowing for transmission jacks, oil drainers and tool chests to be wheeled freely underneath the vehicle. At the same time, it reduces risk of injury and trip hazards.

Available in single phase power.

FEATURES

- Worksafe design registered
- Seamless lift from heavy duty hydraulic cylinders mounted within the columns
- Powerful hydraulic power unit with low voltage controls for added safety
- Low maintenance, easy clean, high quality powder coat finish
- Provides easy access with two-stage asymmetric telescopic arms and two-stage screw adjustable pads
- Extras such as rubber door protectors, 4 x height adaptors, 2 x tool trays included
- Key safety features include safety locking ladders (100mm increments), easy to operate manual lock release and safety limit switch at maximum height
- Optional engineered base frames available for workshops with non-observant concrete thickness.

MODEL NUMBER: AL-6214CF-1PH

// 3.8T 2 POST CLEAR FLOOR HOIST (240V)

[MORE INFORMATION >>](#)



2 POST HOISTS

3.8T 2 POST BASEPLATE HOIST // AL-6254BP



Robust and easy to maintain, the AL-6254BP 3.8T 2 Post Baseplate Vehicle Hoist is designed for maintenance enthusiasts. Featuring an asymmetrical design for improved access, this baseplate car hoist makes vehicle maintenance easy in low roof height environments. With a lift capacity of 3800kg / 3.8 tonne and a total structure height of 3335mm, it makes vehicle maintenance enjoyable, reduces frustration and risk of injury.

Available in single phase power.

FEATURES

- Worksafe design registered
- Seamless lift from enclosed heavy duty hydraulic cylinders
- Powerful 2.2kw 15amp single phase hydraulic power unit with low voltage controls for added safety
- Low maintenance, easy clean, high quality powder coat finish
- Provides easier access with two-stage asymmetric telescopic arms and two-stage screw adjustable pads
- Extras such as rubber door protectors, 4 x height adaptors, 2 x tool trays included
- Key safety features include safety locking ladders (100mm increments), easy to operate manual lock release, arm locks and safety limit switch at maximum height
- Optional engineered base frames available for workshops with non-observant concrete thickness

MODEL NUMBER: AL-6254BP-1PH // 3.8T 2 POST BASE PLATE HOIST (240V)



<< MORE INFORMATION

2 POST HOISTS

4T 2 POST CLEAR FLOOR HOIST // AL-9000CF

With a robust, easy to maintain, asymmetrical design the AL-9000CF 4.5T 2 Post Clear Floor Vehicle Hoist is designed for the professional automotive workshop. With a lift capacity of 4000kg / 4 tonne and a total structure height of 3900mm, this car hoist has the capacity to lift a wide range of cars from small passenger cars, light commercial, low clearance and off road recreational vehicles. The clear floor design allows space for easy cleaning, accommodates ancillary equipment such as transmission jacks or oil drainers, and reduces risk of tripping hazards.

Available in single or three phase power.

FEATURES

- Worksafe design registered
- Seamless lift from heavy duty hydraulic cylinders mounted within the columns to drive the lifting carriages (no chains)
- Powerful hydraulic power unit with low voltage controls for added safety
- Hydraulic cylinder covers protect from debris
- Low maintenance, easy clean, high quality powder coat finish
- Provides easy access to hard to reach lifting points with two-stage asymmetric telescopic arms and two-stage screw adjustable pads
- Extras such as rubber door protectors, 4 x height adaptors & 4WD extensions pads included
- Key safety features include auto locking arms, safety locking ladders (100mm increments), easy to operate manual lock release, safety limit switch at maximum height and safety shut off valve
- Optional engineered base frames available for workshops with non-observant concrete thickness

MODEL NUMBER: AL-9000CF-1PH // 4.5T 2 POST CLEAR FLOOR HOIST (240V)

MODEL NUMBER: AL-9000CF-3PH // 4.5T 2 POST CLEAR FLOOR HOIST (3 PHASE)



[MORE INFORMATION >>](#)

2 POST HOISTS

4T 2 POST BASEPLATE HOIST // AL-9000BP



With a robust, easy maintenance, asymmetrical design, the AL-9000BP 4.5T 2 Post Baseplate Vehicle Hoist is designed for professional automotive workshops. With a lift capacity of 4000kg / 4 tonne and a total structure height of 3170mm, this car hoist is ideal for servicing high roof vans, large 4WDs, and SUVs.

Available in single or three phase power.

FEATURES

- Worksafe design registered
- Seamless lift from enclosed heavy duty hydraulic cylinders
- Powerful hydraulic power unit with low voltage controls for added safety
- Hydraulic cylinder covers protect from debris
- Low maintenance, easy clean, high quality powder coat finish
- Provides easier access with two-stage asymmetric telescopic arms and two-stage screw adjustable pads
- Extras such as rubber door protectors, 4 x height adaptors included
- Key safety features include auto locking arms, safety locking ladders (100mm increments), easy to operate manual lock release, safety limit switch at maximum height and safety shut off valve
- Optional engineered base frames available for workshops with non-observant concrete thickness

MODEL NUMBER: AL-9000BP-1PH // 4.5T 2 POST BASE PLATE HOIST (240V)

MODEL NUMBER: AL-9000BP-3PH // 4.5T 2 POST BASE PLATE HOIST (3 PHASE)



<< MORE INFORMATION

2 POST HOISTS

4.5T 2 POST CLEAR FLOOR HOIST // AL-9500CF

With heavy duty construction, asymmetrical design and a lift capacity of 4500kg / 4.5 tonne, the AL-9500CF 4.5T 2 Post Clear Floor Car Hoist is designed for the professional mechanic. It has the capacity to lift a wide range of vehicles from small passenger cars, light commercial, low clearance and off road recreational vehicles safely with ease. The clear floor design allows space for easy cleaning, accommodates ancillary equipment such as transmission jacks or oil drainers, and reduces risk of tripping hazards.

Available in single or three phase power.

Optional extra height extender kit (from a total structure height of 3900mm to 4900mm) available for purchase.

FEATURES

- Worksafe design registered
- Seamless lift from enclosed heavy duty hydraulic cylinders
- Powerful hydraulic power unit with low voltage controls for added safety
- Hydraulic cylinder covers protect from debris
- Easy access to hard to reach lifting points with two-stage telescopic long arm and three-stage telescopic short arm
- Extras such as rubber door protectors, 4 x height adaptors & 4WD extensions pads, two-stage screw adjustable pads and chassis pads included
- Key safety features include auto locking arms, safety locking ladders (100mm increments), easy to operate manual lock release, safety limit switch at maximum height and safety shut off valve
- Low maintenance, easy clean, high quality powder coat finish
- Optional engineered base frames available for workshops with non-observant concrete thickness.

MODEL NUMBER: AL-9500CF-1PH // 4.5T 2 POST CLEAR FLOOR HOIST (240V)

MODEL NUMBER: AL-9500CF-3PH // 4.5T 2 POST CLEAR FLOOR HOIST (3 PHASE)

MODEL NUMBER: AL-9500EXTKIT // 4.5T 2 POST HOIST HEIGHT EXTENDER KIT



[MORE INFORMATION >>](#)

4 POST HOISTS

4T 4 POST HOIST // AL-4000



MODEL NUMBER: AL-4000S-1PH // 4T 4 POST STANDARD HOIST (240V)
MODEL NUMBER: AL-4000S-3PH // 4T 4 POST STANDARD HOIST (3 PHASE)
MODEL NUMBER: AL-4000A-1PH // 4T 4 POST ALIGNMENT HOIST (240V)
MODEL NUMBER: AL-4000A-3PH // 4T 4 POST ALIGNMENT HOIST (3 PHASE)

With a lifting capacity of 4000kg / 4 tonne, extra width between columns and extra long platforms, the AL-4000 4T 4 Post Vehicle Hoist can accommodate a larger range of vehicles including 4WDs and Utes for repair. Fitted with features such as air over hydraulic operated jacking beams, fully enclosed lifting cables and airlocks, fully enclosed power unit, and front-wheel stop, safety and noise reduction are never compromised.

With easy to maintain, heavy duty enclosed column construction, the AL-4000 is designed with larger workshops, dealership service centers and heavy industry in mind.

Available in single or three phase power. Standard or wheel alignment options

FEATURES

- Worksafe design registered
- Heavy duty, enclosed column, powder coated frame for easy maintenance
- Smooth seamless lift with heavy duty hydraulic cylinder mounted below the platform
- Accommodates a wider range of vehicles with extra width and platform length
- More ramp support with extra long rollers on run up ramps
- Includes 2 x 2T hydraulic air operated jacking beams
- Added safety features include fully enclosed lifting cables, air safety locks, multi position safety locking ladders
- Noise and debris minimisation with fully enclosed power unit and top column cover caps
- Additional features for wheel alignment options include rear slip plates, front and rear turntable recesses. Optional turntables are available.



[MORE INFORMATION >>](#)

SCISSOR LIFT

2.7T MID RISE PORTABLE SCISSOR LIFT // AL-3060

An ideal solution for home garages where ceiling height is an issue, the 2.7T Mid Rise Portable Scissor Hoist is a versatile vehicle lift, suited to any task from wheel and brake repairs, tyre and wheel changing, to general vehicle maintenance.

With a lifting capacity of 2700kg / 2.7 tonne and a maximum lifting height of 1250mm, this low profile, portable scissor lift can be moved virtually anywhere in the workshop using the supplied power cart.

Available in single phase power.

FEATURES

- Twin hydraulic cylinders for maximum strength and stability
- Lifts vertical
- Versatile all-rounder handling wheel and brake repairs, tyre and wheel changing, and general vehicle maintenance
- Adjustable arms and pads
- Portable with rolling power cart
- Riser blocks and four-wheel swivel pads included
- Key safety features include multiple safety locking positions, mechanical safety locks at optimum working heights

MODEL NUMBER: AL-3060-1PH

// 2.7T MID RISE PORTABLE SCISSOR LIFT (240V)



[MORE INFORMATION >>](#)



SCISSOR LIFT

3T FULL RISE ABOVE GROUND HEAVY DUTY SCISSOR LIFT // AL-3000AG

The AL-3000AG 3T Full Rise Above Ground Scissor lift is designed to add capacity and save space in professional mechanical and automotive workshops. Suited to vehicle detailing, tyre and brake work, or inspection and maintenance, this vehicle scissor lift has a lifting capacity of 3000kg / 3 tonne and a no compromise lift height of 1800mm.

Available in single or three phase power.

FEATURES

- Worksafe design registered
- Full rise to 1800mm, 4 cylinders securely raise the extendable platforms
- Easy-to-remove drive-on, drive off ramps
- Cable operated remote control
- Open platform for ease of servicing
- Easy to install above ground installation
- Key safety features include multiple locking positions, air operated safety locks and 24V low voltage control box
- Ideal for low profile vehicles with 110mm lowered height and low profile ramps
- Versatile lift for tyre & brake work, vehicle inspections and general service

MODEL NUMBER: AL-3000AG-IPH
// 3T FULL RISE ABOVE GROUND HEAVY DUTY SCISSOR LIFT (240V)

MODEL NUMBER: AL-3000AG-3PH
// 3T FULL RISE ABOVE GROUND HEAVY DUTY SCISSOR LIFT (3 PHASE)



[MORE INFORMATION >>](#)

MOTORCYCLE HOISTS

0.5T AIR OPERATED MOTORCYCLE HOIST // AL-243612

Designed for professional motorcycle shops and serious enthusiasts alike, the 0.5T Air Operated Hydraulic Motorcycle Hoist has a lifting capacity of 500kg / 0.5 tonne and a maximum lift height of 800mm. Able to service a wide range of vehicles, this motorcycle lift table is a must-have addition to any workshop looking to increase productivity and save time. Model variation to increase the platform with side extensions available.

FEATURES

- Manufactured from professional quality, heavy duty top plate
- Ideal for motorcycles and scooters, and with side extensions, ATV's, quad bikes and ride-on mowers
- Easy to load and unload vehicles with removable ramp
- Adjustable front wheel vice makes it easy to secure the vehicle in place
- Single air lifting cylinder ensures a smooth and efficient lift
- Removable rear wheel cutout allows for easy removal of the rear tyre
- Model variant available with side extensions. Moto jack also available
- Note: this table requires a 6-8cfm compressor to operate the lift

MODEL NUMBER: AL-243612

// 0.5T AIR OPERATED MOTORCYCLE HOIST

MODEL NUMBER: AL-243612EX

// 0.5T AIR OPERATED MOTORCYCLE HOIST WITH SIDE EXTENSIONS



[MORE INFORMATION >>](#)

MOTORCYCLE HOISTS

1T ELECTRO-HYDRAULIC MOTORCYCLE HOIST // AL-243156

With a lifting capacity of 1000kg / 1 tonne and a lift height of 1200mm, the 1T Electro-Hydraulic Motorcycle Hoist is the lift table of choice for heavyweight Harley Davidson or Cruiser style motorcycles. Built with a solid steel base frame and heavy duty steel benchtop, this motorcycle lifter is robust, durable, essential tool that offers a safe and efficient way to work on a variety of cruisers, heavy weight motorbikes and other ride-on vehicles.

Available in single phase power.

FEATURES

- Ideal for heavier, cruiser style bikes
- With optional side extensions, suits quad bikes, ATVs or ride-on lawnmowers or anyone working on a variety of vehicles
- Durably built with a sturdy steel frame and benchtop
- Self-locking, adjustable, heavy duty wheel clamp with 4 tie down points for added safety
- Front and rear drop panels allow for easy wheel removal and repair
- Powerful electric 240v hydraulic power unit makes lifting effortless
- Easy to operate remote control with emergency stop button for added safety
- Key safety features include dual electric safety locks, locking ladder system, electric lock release
- Added rear lift available with additional purchase of optional moto jacks.

MODEL NUMBER: AL-243156

// 1T ELECTRO-HYDRAULIC MOTORCYCLE HOIST (240V)

MODEL NUMBER: AL-243156EX

// 1T ELECTRO-HYDRAULIC MOTORCYCLE HOIST WITH SIDE EXTENSIONS (240V)

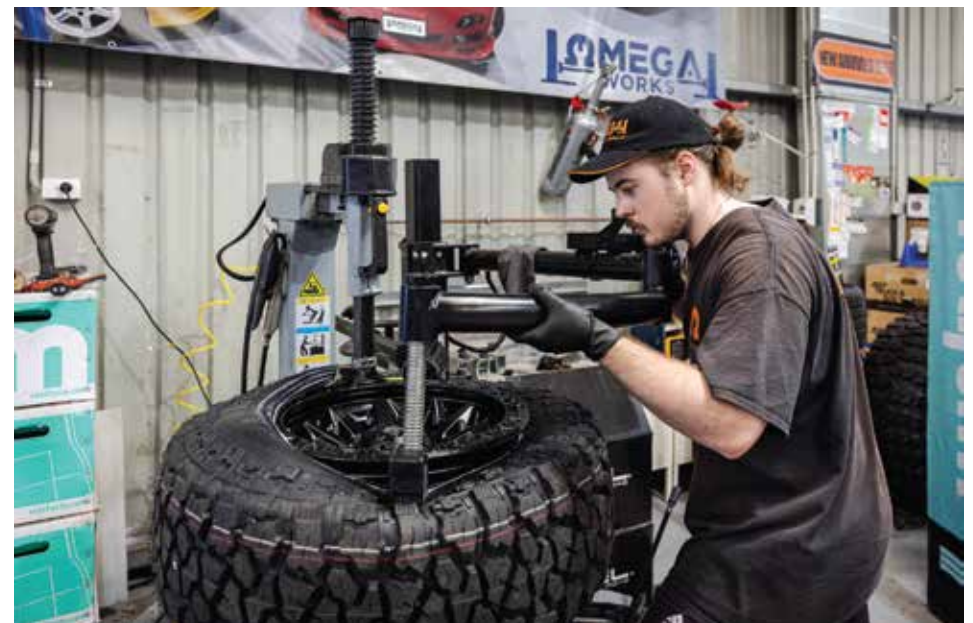
[MORE INFORMATION >>](#)



TYRE MAINTENANCE

Take tyre repair, servicing and maintenance to the next level with our extensive range of wheel balancers, wheel aligners, tyre changers and brake lathes for small passenger cars, sedans, SUVs, off road recreational vehicles, motorcycles, trucks and more.





WHEEL BALANCERS

WHEEL BALANCER - CAR + 4WD TYRES // AS-105024G

Ideal for use in automotive workshops, this automatic wheel balancer features an intuitive control panel for ease of use. Equipped with self-calibrating and self-diagnosing capabilities, it is perfect for balancing car, 4WD and light commercial vehicle tyres.

With its reliable and durable components, this wheel balancer is a cost-effective solution for any tyre and mechanical repair workshops.

Available in single phase power.

FEATURES

- Suitable for cars, SUV, 4WD and commercial vans
- Extended balance shaft
- Automatic self-calibrating and auto self-diagnosing
- Auto A, D data input
- Precise long shaft for narrow tyres
- With static balance and dynamic balance modes
- Includes wheel hood and standard cones set

MODEL NUMBER: AS-105024G // WHEEL BALANCER [CAR +4WD TYRES] (240V)



[MORE INFORMATION >>](#)





TYRE CHANGER

SEMI AUTOMATIC TILT BACK TYRE CHANGER // AM-103826

Suited to all sizes of tyre, mechanical and automotive workshops, this semi-automatic tilt-back tyre changer machine handles a wide range of car, 4WD and light commercial tyres simply and efficiently.

Complete with large bead breaking cylinder, this tyre changing machine features a pneumatic locking system to service car and light commercial tyres from 10 – 20" external diameter. It features a chromium alloy demount tool, LCD digital inflator and single speed reversing switch and an adjustable bead breaker blade from 3 – 15". Optional extras include an assistant arm and motorcycle adaptor for busy workshops.

Available in single phase power.

FEATURES

- Large heavy duty turntable with 584mm (23") with internal wheel clamping to 10 – 20 inch (outer clamp) and 12 – 23 inch (inner clamp)
- Tilting column and pneumatic locking system
- Reversible turntable and air blasting system
- Large bead breaking cylinder
- Chromium alloy demount tool
- LCD digital Inflation gauge
- Single speed reversing switch
- Adjustable bead breaker blade
- Model variant includes left hand assistant arm
- Note 8 – 10 bar air supply is required to operate

MODEL NUMBER: AM-103826

// 3SEMI AUTOMATIC TILT BACK TYRE CHANGER (240V)

MODEL NUMBER: AM-103826RM // SEMI AUTOMATIC TILT BACK TYRE CHANGER WITH ASSISTANT ARM (240V)

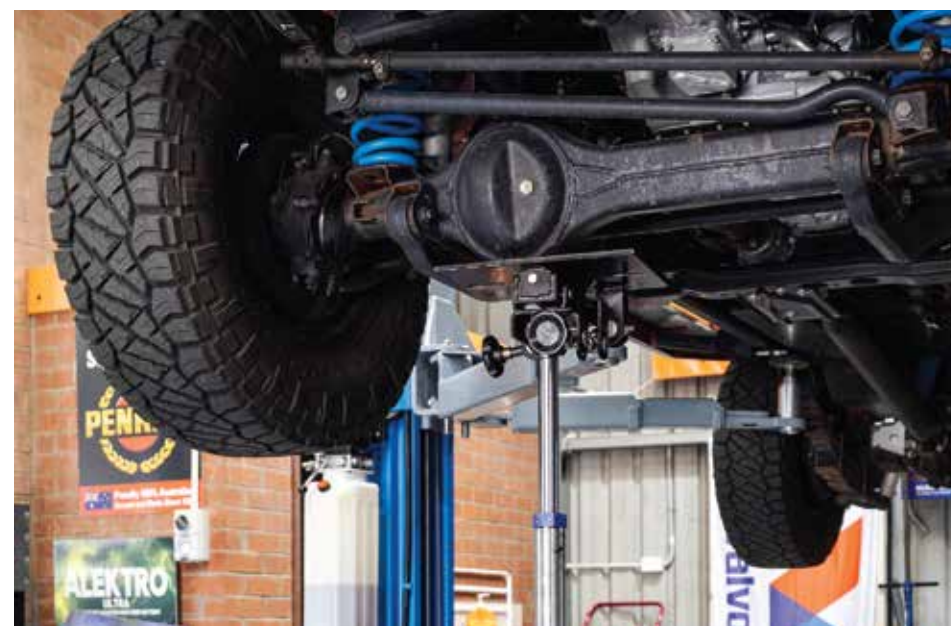
[MORE INFORMATION >>](#)



WORKSHOP EQUIPMENT

Lift your productivity with the right tools for the job. From hydraulic jacks and oil drainers to spare parts, we've got what you need to make your workshop work smarter, saving time and money, and delivering next level comfort, safety and efficiency.





MUST HAVES

UNDER HOIST STAND // AL-201560

Ideal for both automotive workshops and home enthusiasts, this under hoist stand supports exhaust pipes and transmissions, with up to 750kg lifting capacity, a minimum lift height of 1370mm and a maximum height of 2050mm.



70L OIL DRAINER // AQ-OIL70LT

The 70L oil drainer is equipped with a large catch container, a pneumatic drain system, and easy to manoeuvre caster wheels. The drum holds 70L of waste oil and comes with a free transmission adapter funnel for mess-free transmission services.



RUBBER LIFT BLOCKS

Rubber lift blocks available in a variety of sizes.

RLB-0030

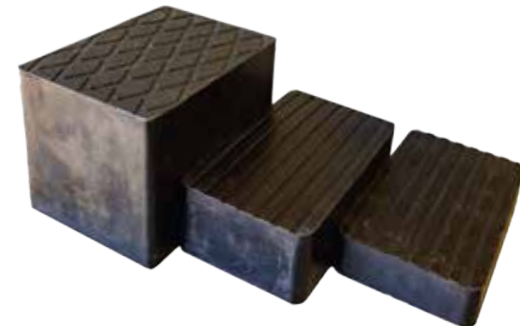
30mm - 30mm(H) x 165mm (L) x 100mm(W)

RLB-0060

60mm - 60mm(H) x 165mm (L) x 100mm(W)

RLB-00120

120mm - 120mm(H) x 160mm (L) x 120mm(W)

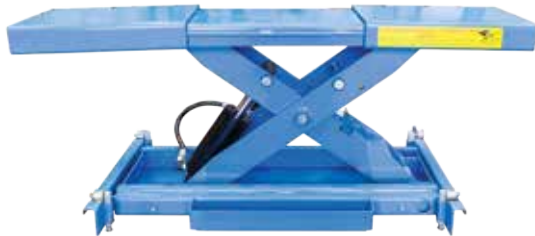


JACKS

2T HOIST JACKING BEAM

// AQ-JACK-2T

With a 2000kg / 2 tonne lifting capacity, this 2T roller air over hydraulic jacking beam is designed to fit between the ramps of the AL-10000T 3.5T 4 post movable hoist. Add two jacking beams to your 3.5T 4-post movable hoist for complete wheels free application. Supplied with 2 x 35mm rubber lift blocks. (65mm and 120mm rubber lift blocks also available for purchase).



3T LOW PROFILE HYDRAULIC FLOOR JACK // AQ-FLOORJACK-3T

The 300kg / 3T Low Profile Hydraulic Floor Jack features dual pumps for quicker lifting. Ideal for low profile vehicles with a 75mm minimum height and a maximum lift of 500mm. Features include:

- Rubber lift pad
- Rubber covered handle
- Two piece handle for easy storage
- 360° swivel rear wheels



1T TRANSMISSION JACK

// AQ-TRANSJACK-1T

Designed for removal, installation and transportation of transmissions, this 1000kg / 1 tonne transmission jack offers a two stage cylinder for extra high reach. Features include a universal mounting head that provides a tilt range of 7-12° forwards, backwards and to the side, foot operated pump and release valve lowering pedal for hands free operation, easy-to-manoeuvre wide base with swivel wheels for extra stability, adaptors with adjustable corner brackets and safety chain to secure a variety of transmissions.



INSTALLATION, SPARE PARTS & SERVICING

We understand the importance of keeping your garage running smoothly. We stock a comprehensive supply of spare parts for all our hoists to ensure minimal downtime. Plus, with a network of preferred installers and service technicians Australia-wide, we can supply everything your garage needs to run safely and efficiently.

**Call our friendly team on
1300 446 478 to book your
hoist maintenance service today.**





LOOKING FOR MORE?

Call us or check our website for a full range of vehicle hoists, car stackers and automotive workshop equipment including:


- Single Posts storage hoists
- 3.6T 4 Post Side x Side Storage Hoist
- 6T 4 Post Hoist (in Standard and Wheel Alignment options)
- 2 Post 2 Car Stackers
- Low Rise 3 Car Stackers
- Mobile Truck Column Lifts
- Car Rotisseries
- Assorted Jacks
- Accessories and more.



AAQ.NET.AU



AVAILABLE AUSTRALIA-WIDE

 1300 446 478

 sales@aaq.net.au

 83 Inspiration Drive, Wangara, WA 6065

AAQ.NET.AU



AAQ Australia reserves the right to change specifications, modify designs, and discontinue items without incurring obligation and whilst every effort is made to ensure that descriptions, specifications and other information in this document are correct, no warranty is given in respect thereof and the company shall not be liable for any error therein. All images are for illustration purposes only.